

**TID** 2015 Award  
Taiwan Interior Design

居住空間/單層

The TID Award of Residential space / Single Level

積木山莊

Block Village

好室設計

HAO Design

主持設計師

Chief Designer

陳鴻文 Ivan

攝影者

Photographer

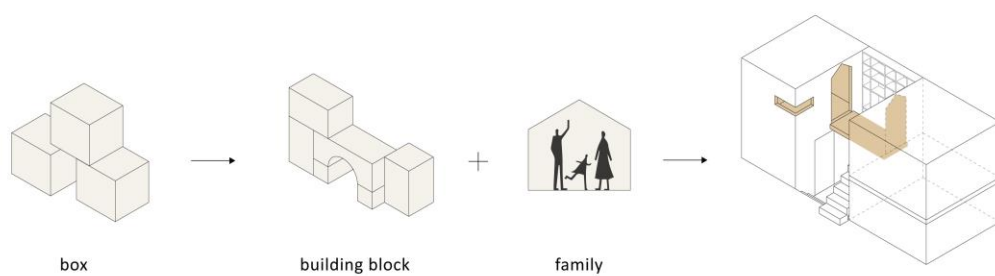
Hey! Cheese

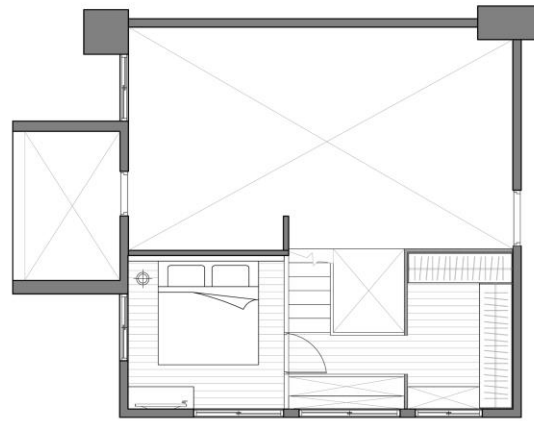


## BLOCK VILLAGE INTERIOR DESIGN

步入12坪的空間，站立於玄關時便已能望見後陽台通透的光線，它毫不造作地劃分出空間機能。位於右前方的客餐廳，是未來會承載最多家庭記憶的空間，於是決定讓光線恣意地順倚廚房，灑落一家三口對於家的想像，帶出那些松木質調的樸實、綠色調的和諧，以及白色烤漆牆面的簡單幸福。

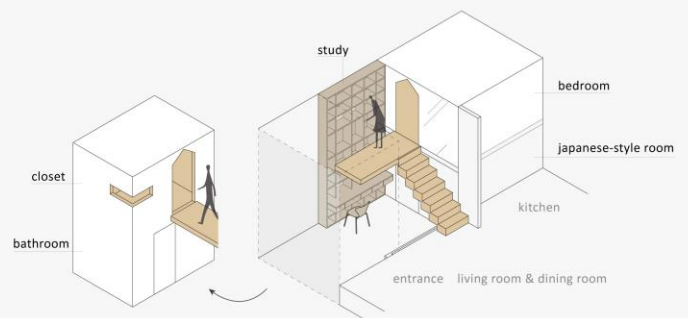
While stepping into the 12 ping (39.6 square meters)'s house, you can feel the light revealing from the balcony clearly and simply light up the spatial functions. The living room and the dining room in the front right side will be the space to carry most of the family memory in the future. Thus, the designer decides to make the light shine unbridledly along the dining room, bringing out how the family imagine their future home – along with the simple and plain texture of pinewood, the harmonious green color, and the simple but happy atmosphere of white painted-wall.





以往，住宅的夾層空間總用來保留最基本的三房兩廳及收納需求，此案更著重於增添行走經驗時的視覺感官趣味，主動線樓梯結合過道形成空橋面，串接2.5坪主臥與1.5坪更衣室，兩者正好為相對緊密的連續機能。

Usually, the floor space is designed to meet basic space requirements (3 bedrooms, 1 dining room and 1 living room) and the storage demand. However, in this case, the designer pays more attention to create the pleasure of visual sense while dwellers walking in the house. The main circulation – stairs combine with the aisle turning into an air bridge, connecting the master bedroom (2.5 ping) and the walk-in closet (1.5 ping), which are capable of relatively closer spatial functions.

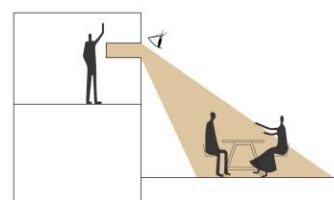
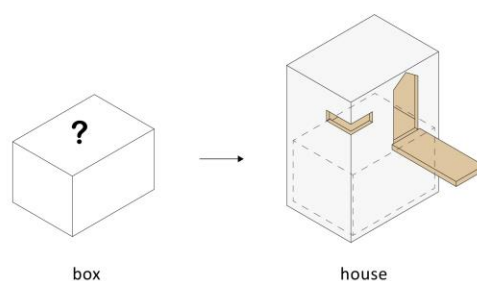






主臥實牆保留私密性，仍不忘留下光影的痕跡，將客廳最重要的框景伏筆埋於更衣室的角窗，讓親子日式空間收納於主臥之下，衛浴配置於更衣室之下，上下空間偶爾相對相鄰。

While keeping privacy for the master room, the designer still leaves the light and shadow in it, and makes the corner window in the walk-in closet foreshadow the most important view of the living room and the dining room. Through designer's arrangement, Washitsu room for family activity is contained under the master room, and the sanitary equipment is right under the walk-in closet. The two spatial functions of up and down space complement each other.





進而將梯下空間轉換為另一穿過過道，在上下過道空間的挑空面，皆運用松木夾板打造書牆，除擴展空間尺度感以消除壓迫外，也能創造視覺軸線上的延續，住宅最外層以窗框景，內層以虛實門裏門外創造景框，將高度的使用彈性充斥其中。

The designer transforms the space under the stairs into another aisle, and by creating bookshelves along the atrium wall of the air bridge above and the aisle below, not only extending the spatial scale to eliminate the sense of pressure, but also creating the extension of visual axis. From outer layer of the architecture, the designer uses the windows to frame the scene, but using real and imaginary door shape to create the frame from the inner layer.





客廳中的電視機可以滑軌彈性旋出，也可收納回牆面維持面對餐桌的水平視角，取代以往的獨立電視牆設計，壁面上的收納櫃空間按裝隱藏式把手設計，讓廚房與客廳維持寬敞俐落，各空間看似獨立，實則緊密，以綠色貫串空間對話，日式榻榻米地板的抹茶綠與主臥牆面的綠相融，黑板的深綠與客廳收納櫃緣線底的綠對望，時間也成了胡宅景框內的構圖元素，隨生活會不斷改變、重新安排與定義，塑造出生活樣貌最純粹的框架。

The height is an element that is sufficiently applied in designing, for example, the television in the living room is flexible to screw-off along the slide rail, and is able to stow into the wall, keeping horizontal to the dining table. The design replaces the traditional single-function television wall. Besides, the storage cabinet on the wall is equipped with hidden handles to keep the living room and dining room commodious and neat. Each room seems independent but actually closely connected. The consistent green-tone gives rise to the spatial dialogue – matcha-green of the tatami is blended with the green color of the wall in the master room, while the dark green color of blackboard consistent with the green color of the storage cabinet bottom. Time is also another element when framing the scene. It's constantly changing, being rearranged and redefined to shape the purest look of the family's life.

