



公共空間類 TID 獎
The TID Award of Public space

自然的感知 _ 中央研究院生態時代館
Perception of Nature_ SINICA Eco Pavilion

上騰聯合建築師事務所
Emerge Architects & Associates

主持設計師
Chief Designer

楊秋煜
Sam Yang

協同設計師
Co-designer

張雯怡
Ally Chang

劉彥佑
Uz Liu

攝影者
Photographer

游宏祥
Kyle Yu

自然的感知

Academia SINICA ECO-Pavilion

Perception of Nature

Perception

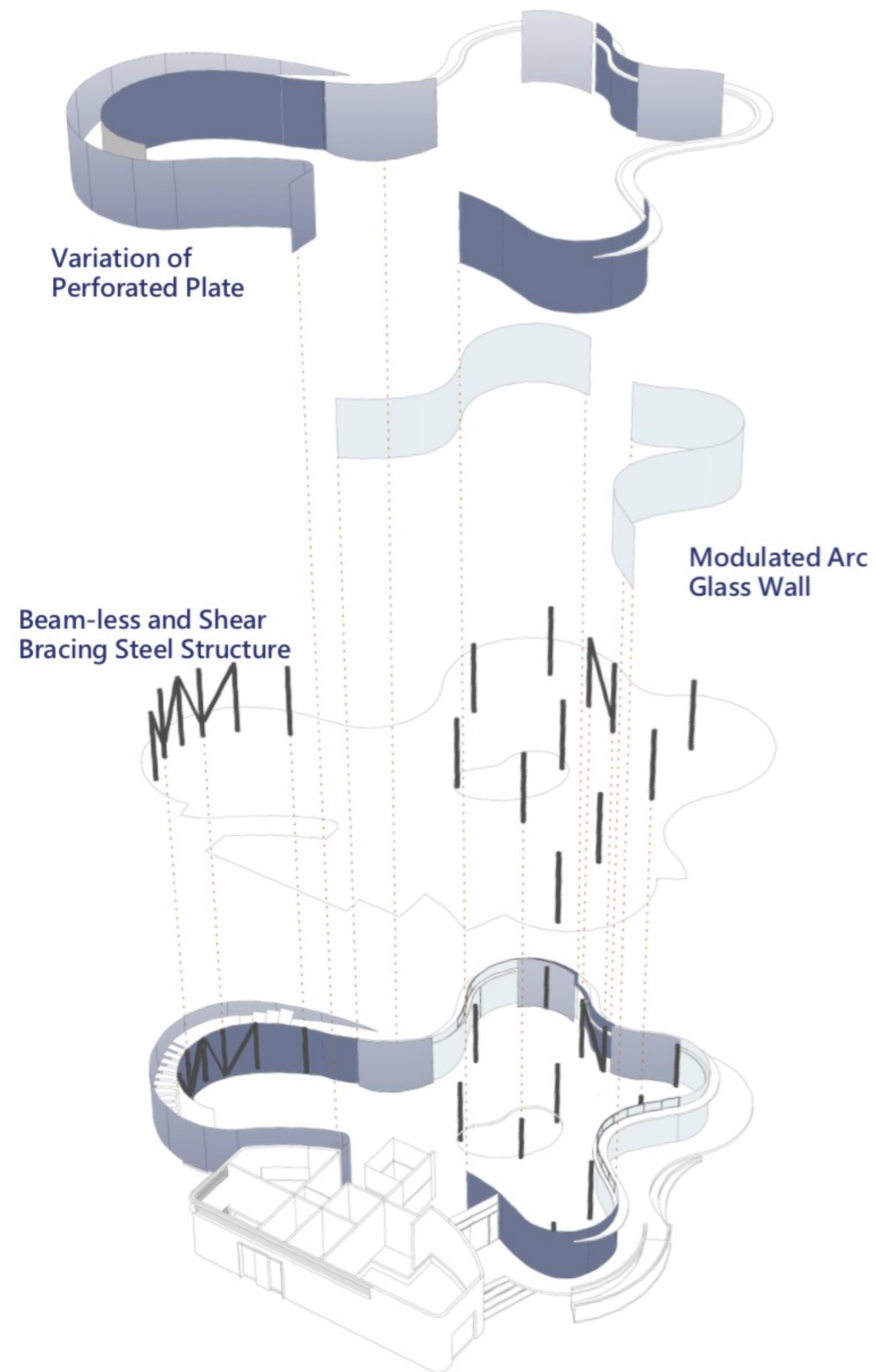
*Surrounding of scenery,
Greenery through the pore,
Indoor and outdoor scenery overlapped
together,
Fluid of light and shadow diverse with the
elapse of time,
Tactile impression of leaves in the hand,
The temperature of seasons in the air,
The bird humming on the trees ,
.....
The perception of daily life .*



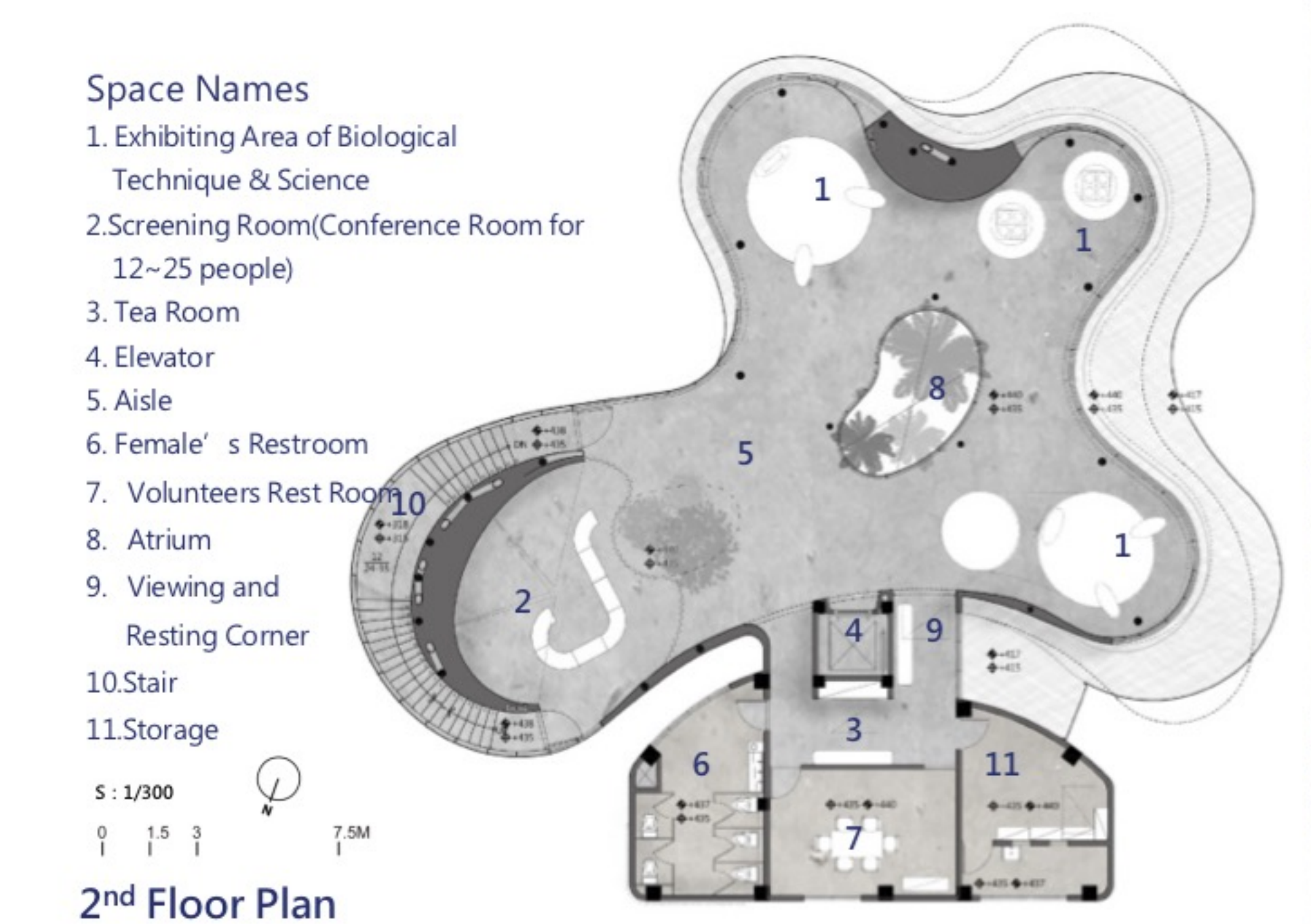


Various Experience of Indoor & Outdoor Perception

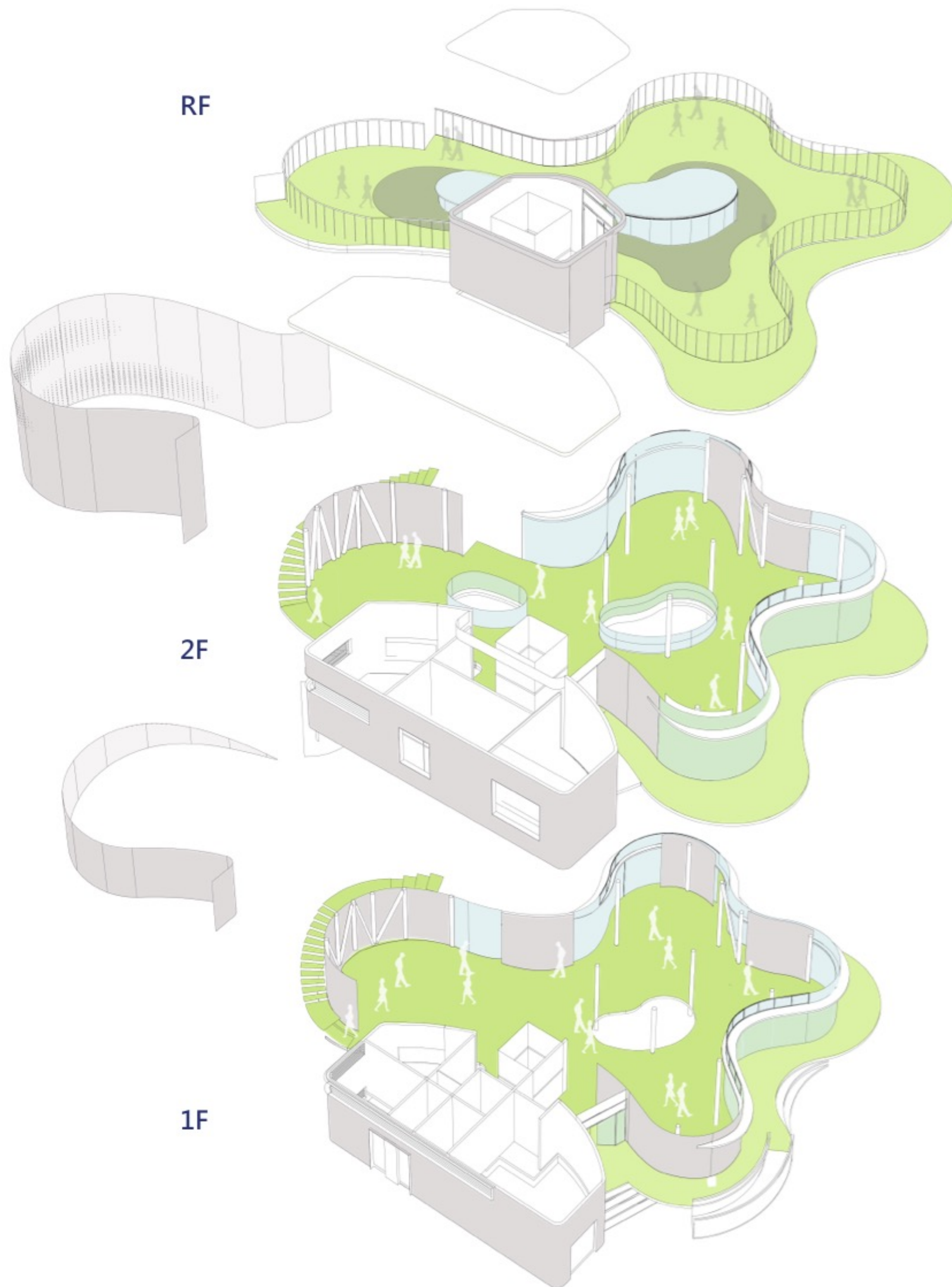
Different transparency of façade blur the boundary of indoor and outdoor



Spatial Planning Schematic Floor Plans



Design Concept Fluid Architectural Plan with Opened Vision Field









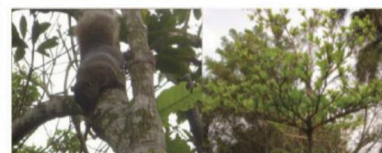
E. 生態水池觀察點



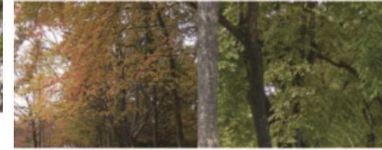
D. 樹冠、樹梢觀察點



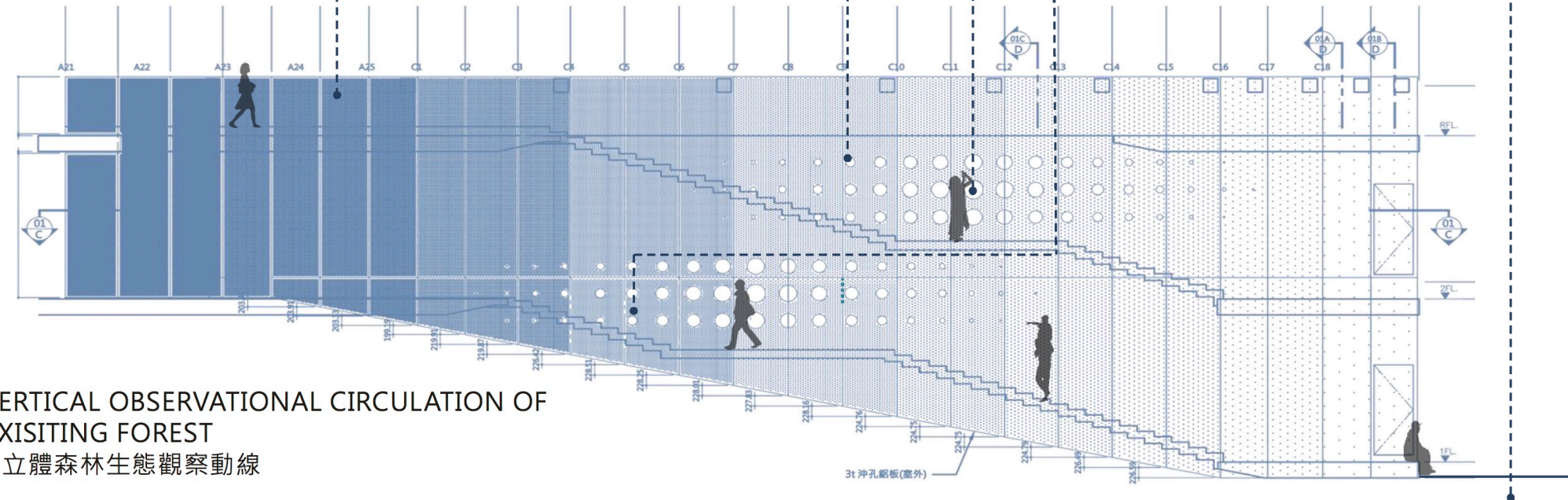
C. 樹幹、樹冠觀察點



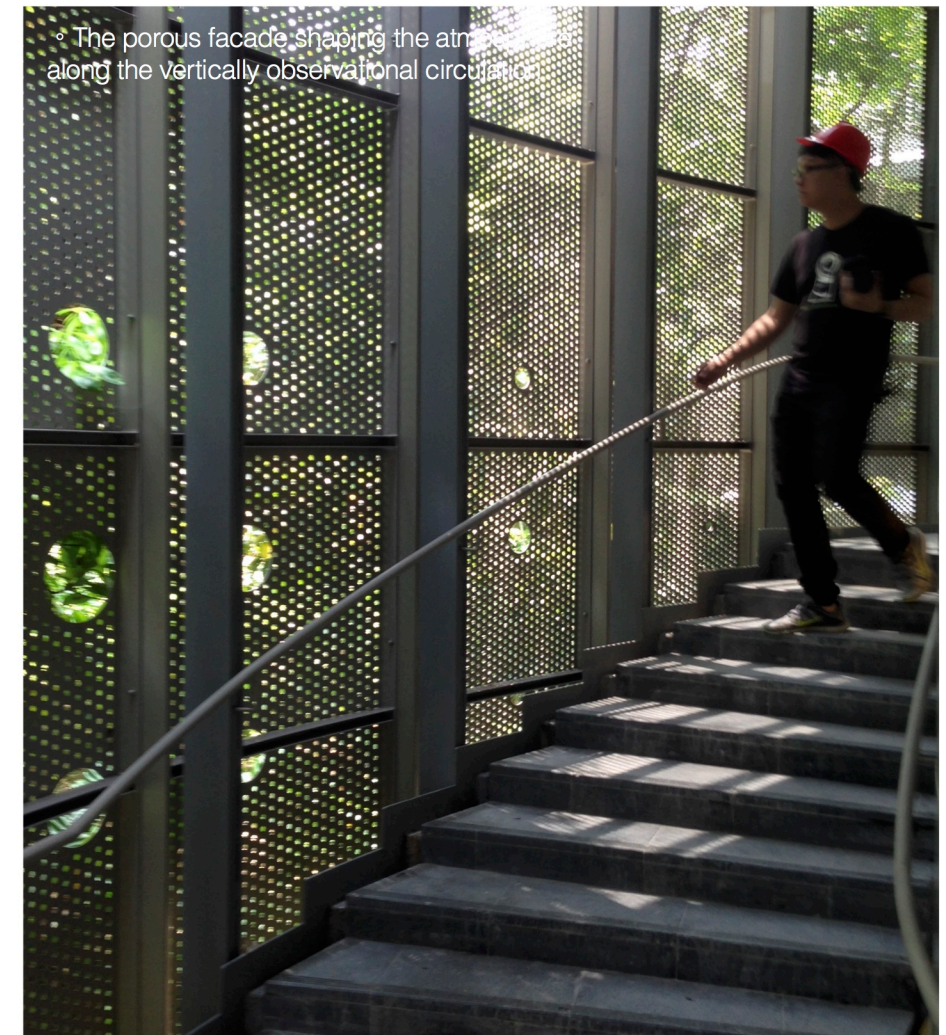
B. 樹幹觀察點



A. 樹根(地被、灌木)觀察點



◦ VERTICAL OBSERVATIONAL CIRCULATION OF EXISTING FOREST
/ 立體森林生態觀察動線



◦ The porous facade shaping the atmosphere along the vertically observational circulation



The dialogue between artificially interior space and natural surrounding in outdoor.



◦ Continuous form delineate contour of the eco pavilion and reveal the harmony between new and old



◦ Reflection of artificial space and nature blended on the low-e glass curtain







PS-10-自然的感知 __ 中央研究院生態時代館	PS-10- Perception of Nature_ SINICA Eco Pavilion
<p>環繞的景致， 孔隙之間的綠， 內外交疊映射的景， 光影與時間的流動， 樹葉的觸感， 四季空氣的溫度， 樹梢清唱的鳥鳴， 一個感知的日常體驗。</p> <p>基地位於中央研究院區內的景觀生態復育區內。開始的設計發想，是與景觀、展示顧問共同討論，藉由跨領域的激盪，跨越專業與專業之間的那條線，呈現開放的激盪與融合的對話。</p> <p>為保存既有老樹，空間因應隨機變形而為樹林所圍繞，輔以挑空中庭植栽，景觀悄然入室，視野也延伸出去。觸手可及的樹木，又成了生動的展示。</p> <p>藉由透明性不斷變化的牆面，創造出一連續性，隨著遊走而有曖昧內外感知的空間體驗。展示從室外即開始，生態景觀與展示物，虛與實、內與外交疊映射於玻璃上不斷對話，產生了曖昧的感知。於是，建築、景觀與展示的區別也模糊了。</p> <p>展示空間、大廳、櫃台、休息區、解說區、放映室等個別口袋空間，形成了「是個別也是整體」的流動連續性空間。</p> <p>內依舊是內，外依舊是外，然精神上的感受與渴望，卻模糊了內外界線。</p> <p>規劃課題</p> <ol style="list-style-type: none"> 1.感知自然 <ul style="list-style-type: none"> · 藉由牆面材料的變化及營造出雖內猶外、亦內亦外的空間感受。 · 天井光線通達了室內大部分的空間、多層次室外綠意的引進與接觸，及浮力通風的氣流導入建物，利用光、風、景的自然元素。讓人森在其中，亦可感知周圍自然環境並與之共存。 2. 建築永續 <ul style="list-style-type: none"> · 配置尊重既有老樹、景觀、生態。 · 採用鋼骨 RC 及無樑板構造，降低資源損耗，與對現地生態衝擊。 · 綠建築亦為生態展示的一環。 3. 整合串聯 <ul style="list-style-type: none"> · 展示館作為串聯、整合周遭生態水池、稻田、森林的重要節點。 4. 空間、景觀、展示三者一體的規劃設計 <ul style="list-style-type: none"> · 室內、外展示參觀的整合，與不同高度的生態觀察。 · 結合建築空間規劃，營造出“漫步林間”感覺的室內展示空間”。 · 預留最大彈性布展展示空間。 5. 複合式的機能 <ul style="list-style-type: none"> · 生態展示空間及院區解說導覽休息站。 · 院內主要資訊中心 (Information center)。 · 茶會、論文發表、研討會等舉行。 	<p><i>Surrounding of scenery</i> <i>Greenery behind the pore</i> <i>Indoor and outdoor scenery overlapped together</i> <i>Fluid of light and shadow diverse with the elapse of time</i> <i>Tactile impression of leaves in the hand</i> <i>The temperature of seasons in the air</i> <i>The bird humming on the trees</i> </p> <p><i>The experience of perception in daily life .</i></p> <p>The site of this project located in the landscape and ecology restoration area of SINICA. Inspiration of design from the very first comes out with the discussion and communication between landscape and exhibition consultants. By the interdisciplinary integration and crossing through the boundary between professions, which represented the unlimited brainstorming and the dialogue of fusion.</p> <p>In order to preserve the existing old trees, the shape of new mass defined by gap among trees and transformed into an organic plan, so that the new pavilion will be intimately surrounded by trees. Assisting the perceptual experience with plants in the interior atrium, which not only quietly brings in the greenery of landscape, but also extends the vision. The touchable trees have also become a vivid exhibition of nature. By changing the transparency continuously of wall to create a continuity, ambiguous spatial perception of in and out when roaming. The exhibiting starts from outdoor, creating dialogues between ecological landscape and exhibits, vacancy and reality, internal and external overlapped on the glass wall and came up an ambiguous perception. Therefore, the distinction between architecture, landscape and exhibition has been blurred in the project.</p> <p>Such pocket spaces like exhibition area, lobby, frontier, interpreting area and screening room, ... etc. composed a fluidly continuous space which is individual but also assembled</p> <p>Indoor is still indoor, outdoor is still outdoor, however, the boundary between them has been blurred in the spiritual perception and aspiration.</p> <p>Issue of planning</p> <ol style="list-style-type: none"> 1. Perceiving Nature <ul style="list-style-type: none"> ●Utilizing variation of materials of wall to create the spatial experience ,in which staying at indoor is like at the outdoor that sensations of both reciprocate spiritually. ●The atrium light is able to reach to most of interior rooms, multi-layers of greenery are introduced and contacted and the air flow is conducted into the building by buoyancy ventilation, that these natural manipulations of elements make users felt living in the forest, perceiving the surrounding nature and coexist with it. 2. Sustainability of Architecture <ul style="list-style-type: none"> ●Respecting the existing trees, landscape, ecology during the process of planning. ●Integrating the utilization of SRC and Beamless Panel structure to reduce the consumption of energy resources and ecological impact to the site. ●Sustainable architecture is also part of the ecological exhibition. 3. Integration and Connection <ul style="list-style-type: none"> ●The pavilion an important node, which connects and integrates the adjacent ecological pool, rice farm and forest. 4. The Planning and Design in trinity by Space, Landscape and Exhibition. <ul style="list-style-type: none"> ●Integration of indoor and outdoor exhibition visit. The observation of ecology in different altitude. ●By combining the architectural space planning , creating an interior experience of wondering in the woods. ●Retaining the greatest flexibility of space for exhibiting. 5. Compound Function <ul style="list-style-type: none"> ●Ecology exhibiting space and rest stop for guiding tour of Academia SINICA Park ●Information Centre of Academia SINICA ●Location for holding tea party, thesis publication, seminars... etc.