



居住空間類/單層 TID 獎
The TID Award of of Residential Space / Single Level

張宅
C HOUSE

兩冊空間設計
2BOOKS DESIGN

主持設計師
Chief Designer

翁梓富
Jeff Weng

協同設計師
Co-designer

許煒甯
Ning Hsu

攝影者
Photographer

亮點影像
highlite image



張宅 | C HOUSE

該案是台灣很普遍存在的公寓型式，客戶希望我們能解決公寓本身存在陰暗，封閉的問題，並且能夠有足夠的收納空間可運用。
對此,我們試圖使用更少的隔間牆來區分空間，使其更寬敞和開放，而不影響功能。
主導性材質的選擇，從一開始的討論,就圍繞在使用原始混凝土，來做為地板和牆壁元素。
透過混凝土略為粗獷的質地，將映照到室內的光線呈現出溫暖質樸的感受，而作為主導性材料存在,混凝土的美學特徵，隨著案件進展及型態結構的發展也越來越重要。
作為基準點，則成為所有其他材質決定的驅動程序。 延伸部分的外立面採用米色鋼鐵和灰色橡木製成的內部木作，兩者都為光滑混凝土的紋理提供了必要的對比，溫暖和豐富。

The case is a very common type of apartment in Taiwan, the customer hopes that we can give a solution for the problem of the darkness in the interior space, and provide enough storage . Thus, we try to use fewer wall to divide the space to make it more spacious and open but keep the function of use .

From the beginning of the discussion, the choice of main material is focus on the use concrete from the original space, and leave it as floor and wall. the light showing a warm and simple feeling through the texture of concrete which is slightly rough . the aesthetic characteristic of concrete, become more and more important through the development and progress of the case.

As a reference point, concrete becomes “the driver “who decides all the other materials. The extension part of the facade is made of beige, and the interior is made of grey oak wood. Both of them provide the necessary contrast, warmness and richness for the smooth texture of concrete.



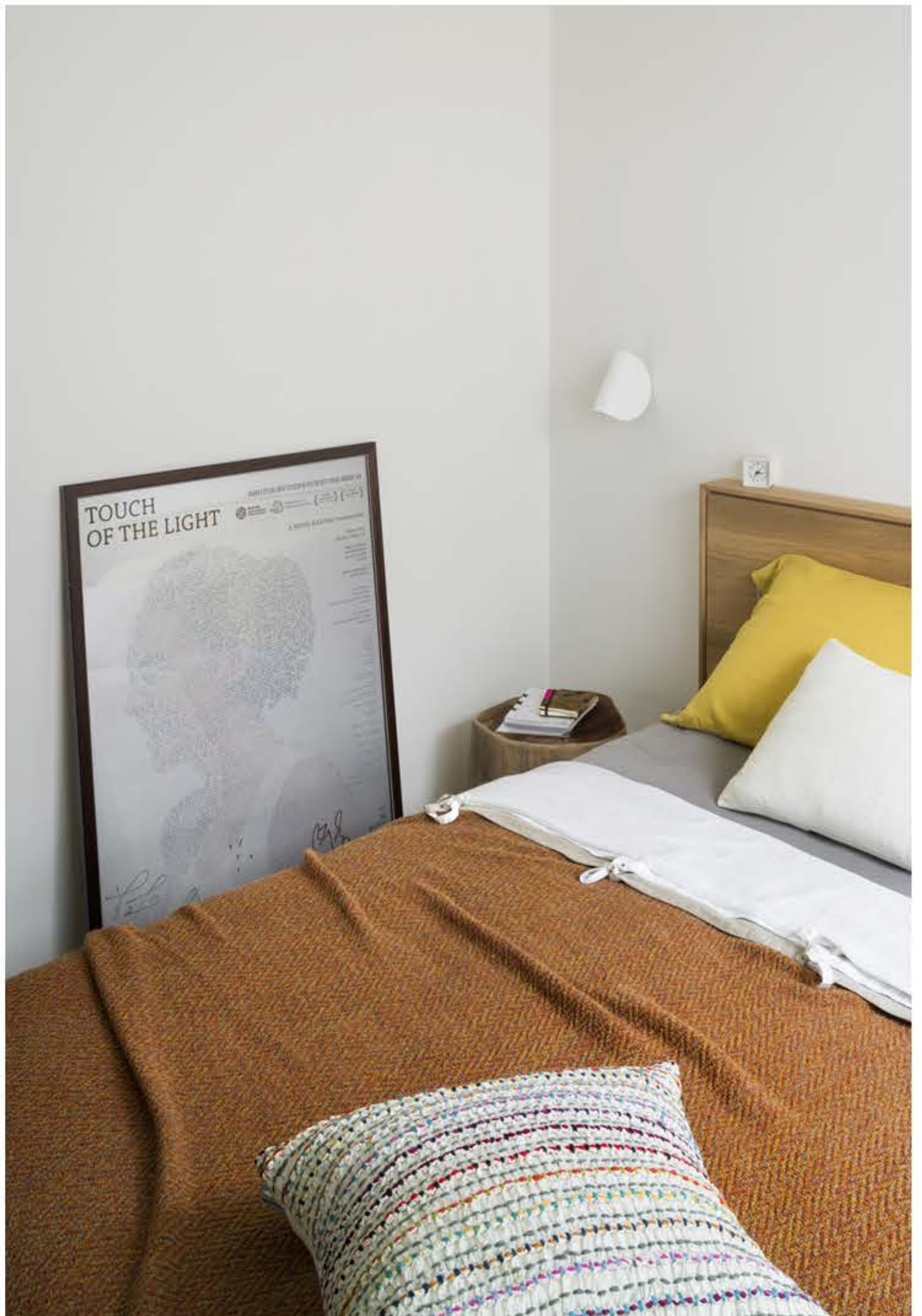
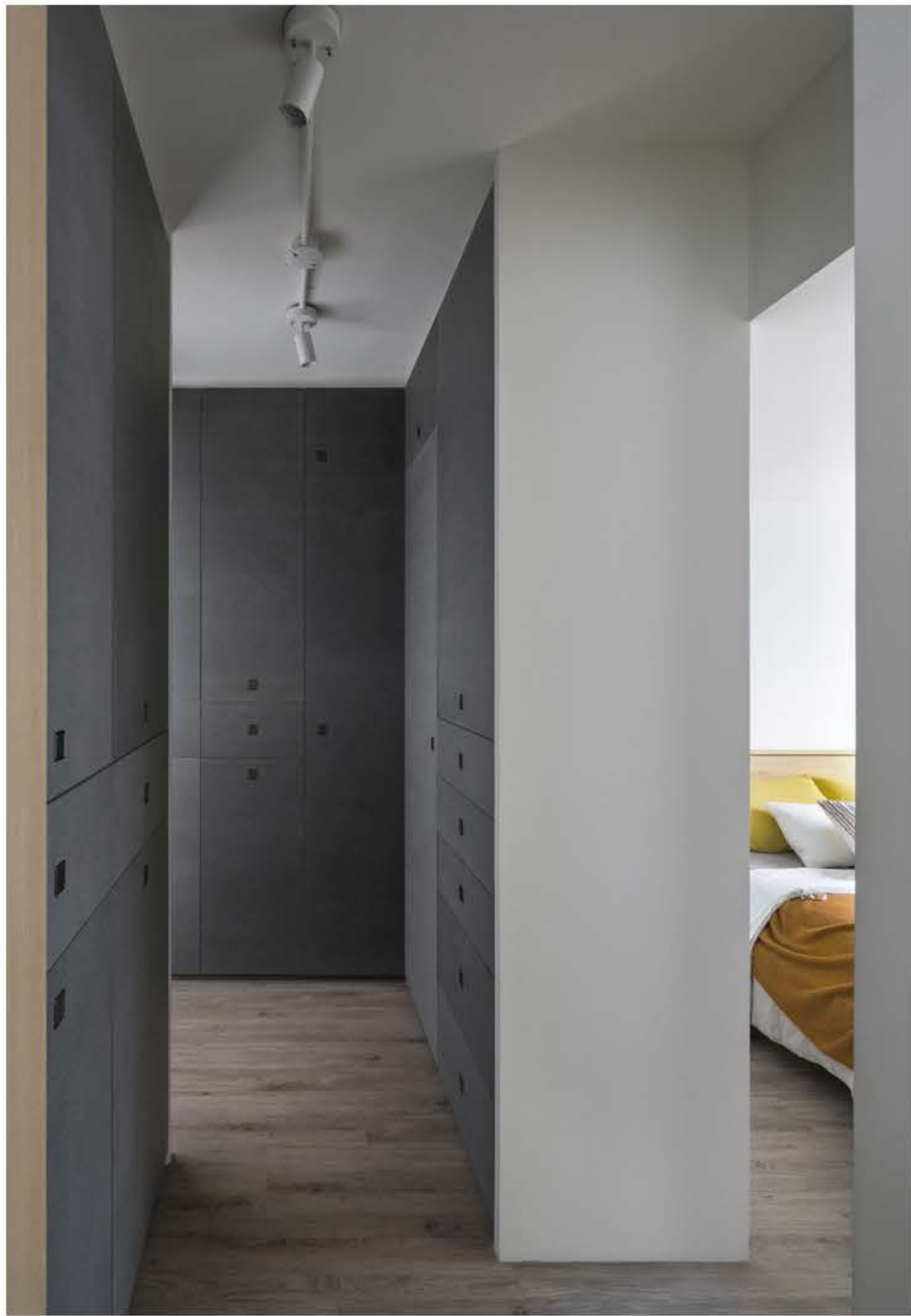












RS-S-48-張宅

該案是台灣很普遍存在的公寓型式，客戶希望我們能解決公寓本身存在陰暗，封閉的問題，並且能夠有足夠的收納空間可運用。

對此,我們試圖使用更少的隔間牆來區分空間，使其更寬敞和開放，而不影響功能。

主導性材質的選擇，從一開始的討論,就圍繞在使用原始混凝土，來做為地板和牆壁元素。透過混凝土略為粗獷的質地，將映照到室內的光線呈現出溫暖質樸的感受，而作為主導性材料存在,混凝土的美學特徵，隨著案件進展及型態結構的發展也越來越重要。

作為基準點，則成為所有其他材質決定的驅動程序。延伸部分的外立面採用米色鋼鐵和灰色橡木製成的內部木作，兩者都為光滑混凝土的紋理提供了必要的對比，溫暖和豐富。

RS-S-48- C HOUSE

The case is a very common type of apartment in Taiwan, the customer hopes that we can give a solution for the problem of the darkness in the interior space, and provide enough storage . Thus, we try to use fewer wall to divide the space to make it more spacious and open but keep the function of use .

From the beginning of the discussion, the choice of main material is focus on the use concrete from the original space, and leave it as floor and wall. the light showing a warm and simple feeling through the texture of concrete which is slightly rough . the aesthetic characteristic of concrete, become more and more important through the development and progress of the case.

As a reference point, concrete becomes “the driver “who decides all the other materials. The extension part of the facade is made of beige, and the interior is made of grey oak wood. Both of them provide the necessary contrast, warmness and richness for the smooth texture of concrete.