



居住空間類/微型 TID 獎
The TID Award of of Residential Space / Small House

FUGE Project No. 314

馥閣設計整合有限公司
Fuge Design Integration Co., Ltd.

主持設計師
Chief Designer

黃鈴芳
Ling-Fang Huang

攝影者
Photographer

吳啟名
Kevin Wu

















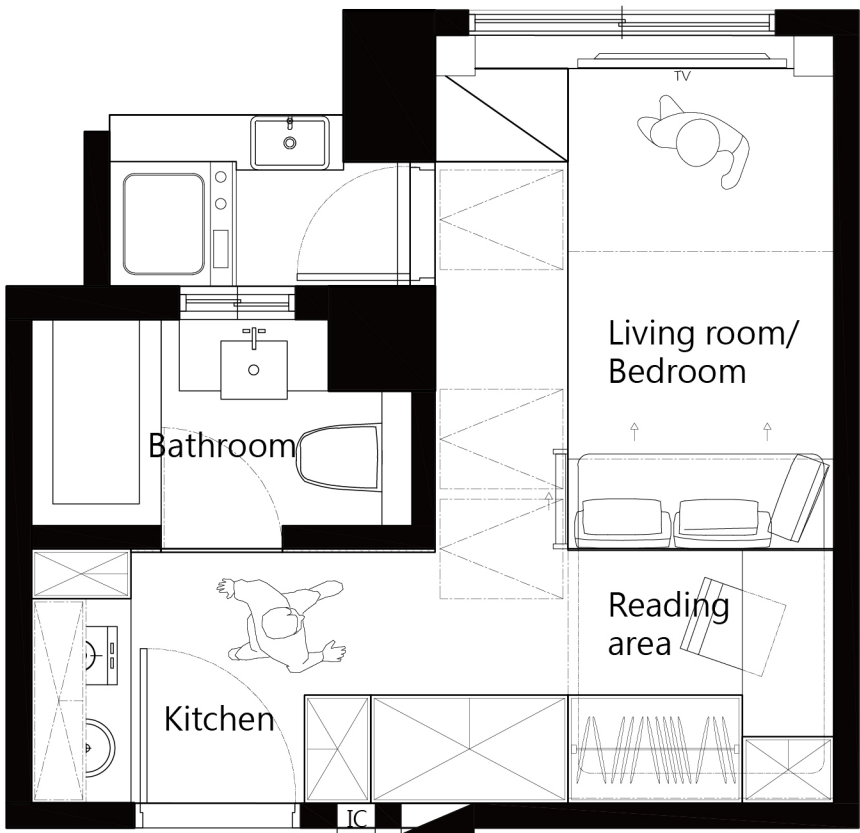
GLOBAL
TRENDS
'HOTEL'
DESIGN

Zen: The Eastern Residence
THE HOUSE IN TAIWAN 台北居所

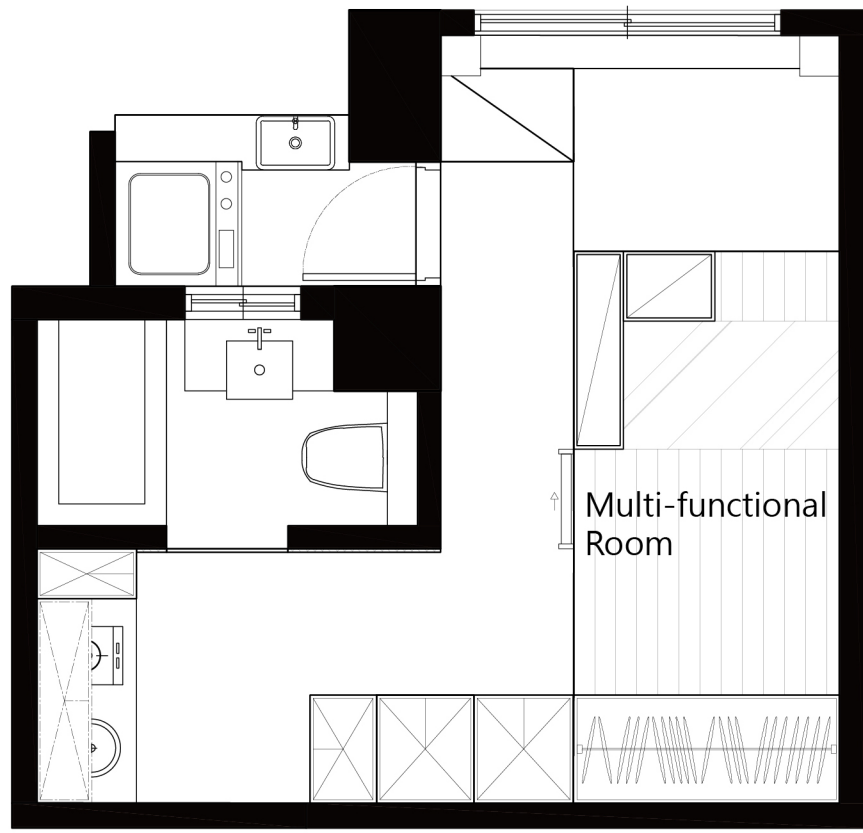








1F



Mezzanine

RS-SH-01-FUGE Project No. 314	RS-SH-01-FUGE Project No. 314
<p data-bbox="73 201 732 233">在細節上解決日常需求及空間問題，生活更加舒適便利。</p> <p data-bbox="73 296 1106 424">本案室內空間 8 坪，其中 4 坪於三米六高度層由建築規畫中設置了廚房、衛浴及陽台空間，而剩餘 4 坪於四米二高度層之空間，設計上需含蓋屋主夫妻與孩子的起居、閱讀、睡眠空間。</p> <p data-bbox="73 488 1106 616">我們設計的包含了動線的改良及空間的利用，設計上的改善讓屋主一家能擁有舒適便利的生活。在返家後的動線上，由孩子的書桌至盥洗空間，女主人的料理空間至衣物洗滌動線皆由一條兼具收納及平坦行走的長廊構成，解決了在空間中需不停上上下下的不便。</p> <p data-bbox="73 679 1106 855">在忙碌的家事活動後，一家人至下層空間可於沙發上聊天休憩，夫妻倆可品嚐紅酒、聽音樂、看影集，孩子也可至上層空間閱讀或玩耍、休憩、夜裡入睡時，拉出沙發後方隱藏的床組及被褥，雙人大床滿足了小空間的大想像。隔天起床後，也可直接將被子後推至後方空間中，節省了許多整理的時間。</p>	<p data-bbox="1133 201 2112 280">To provide space and living solution through key design element for a fine mix of comfort and convenience.</p> <p data-bbox="1133 344 2168 424">Half of the room is set up for bathroom, kitchen, and the balcony, while the remaining is turned into living room, a reading area, and the family bedrooms.</p> <p data-bbox="1133 488 2175 711">We aim for better utilization of space and natural circulation. With that in mind a long walkway now chains up different sections of the house instead of dividing up separate rooms in regard to use. From children’ s area to the main kitchen are now interconnected. Therefore eliminate the need to go up and down to many different rooms in a traditional setup.</p> <p data-bbox="1133 775 2163 951">Now the family can relax at the resting section of the house at the end of a long day. There is a twin bed tucked away behind the couch when it is time to sleep, and it can be pushed back again along with the blanket to save up just a bit of extra time for the precious morning.</p>