

TID11th2018Award
Taiwan Interior Design

商業空間類/休閒空間 TID 獎
The TID Award of Commercial Space/ Hospitality Space

X-CLUB

廣州共和都市設計有限公司
Republic Metropolis Architecture

主持設計師
Chief Designer

黃永才 Ray wong

攝影者
Photographer

覃昭量 Jack Qin

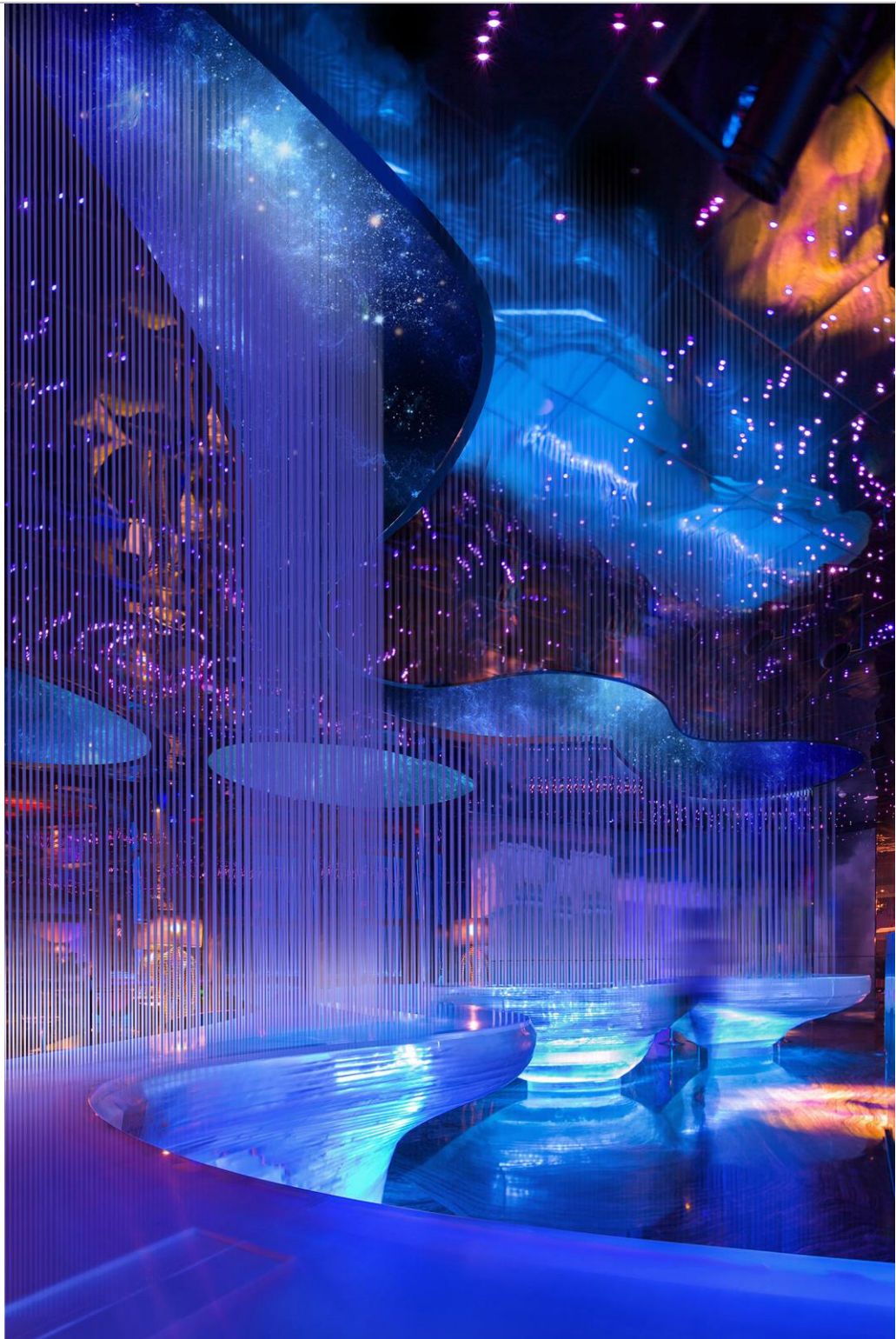


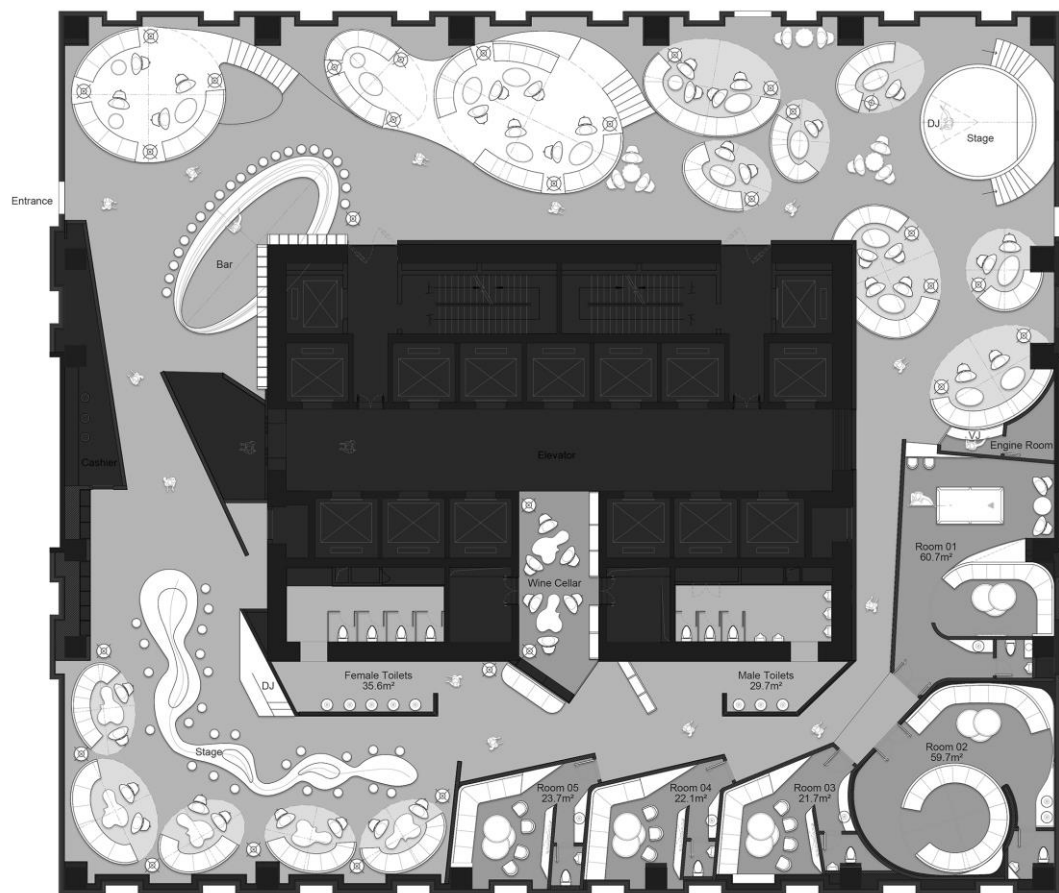












X-CLUB FLOOR

CSH-01-X-CLUB

“X”是未知，充滿各種可能性。

“X”是拒絕，拒絕沒有想像的無趣。

娛樂逃離現實的乏味，在離開地面的高空，憑肆意瘋長的想像製作驚喜。

X-club 以在雲端漫步的遐想來描繪未來的詩意。漂浮的雲朵，蒼古的星空，輕盈的人群.....

從入口進來便可見到有白色的“GRG”雲團充斥著一側的空間。雲團由近到遠，從高至低延續至舞臺前端。由高至低的“雲團”的設計使得所有雲團裡的客人都能看見及感受到舞臺的熱度。深黑色色的天花與地面如浩瀚的宇宙，使得白色的雲團清晰靈動。每處雲團的上空設計了無序的led點燈，營造繁星點點的星空。

核心筒一側是一整面的IED螢幕，隨著LED播放的主題內容的變化“雲團”染色不斷地變化。光的體驗豐富而夢幻。(如北極光般變幻萬千。)

在核心筒的轉角處，雲團在此處形成吧台，吧台上空設置了搶眼的燈光裝置，比星空更加璀璨。無序卻有流動感，方向指向不同的兩端，一處是動感十足的舞臺，一處是相當安靜的靜吧區。

靜吧區中間由一個巨大的亞克力吧台構成，在吧台上方有密集的亞克力細管構成半通透的面體。通過投影可以看到舞臺區的直播，使得靜吧區與舞臺有一定的關聯。在星空的天花周圍有大小不同形狀各異的LED螢幕。播放的主題也同時影響著空間的光與色。

雲端漫步的遐想的概念貫穿於整個空間，使得空間有鮮明的主題及明確的體驗感。

CSH-01-X-CLUB

“X” indicates unpredictation, which is full of possibilities.

“X” indicates refusal, which refuses any unimaginative vapidity.

Entertainment, is that produces surprise with wild-growing imagination, escaping from the vapidity in reality and staying away from the “ground”.

X-CLUB is backgrounded by walking-in-air reverie to trace out the poetry-like scene for the upcoming. Floating cloud in the Van Gogh's starry sky and pleaceful people and so on.

While entering X-CLUB, “GRG” white cloud emerges and full-fill one-side space. The cloud, from far to near and from top to bottom, extends to the front of the stage. High-to-low cloud cluster design makes it possible for clients to get views and feel the heat from the stage. Backgrounded by dark black cosmic-like ceiling and floor, the clouds look more clear and alive.

Every cloud cluster designed with decorated-light overhead is to establish a starry-sky scene.

One side of the center-pipe is all-covered by a LED screen. And dizzy-color on cloud cluster constantly change following what the subject LED screen plays. People will get an averiety and dream-like experience from the light of the clouds. (As same as the aurora borealis. ever changing)

At the corner of the center-pipe, a bar table gets in shape by the extended cloud. Overhead the bar table, there is the catching-eye light device, while it is on work, looking more shinning than the starry sky. The device shoot out to both ends freely and smoothly, to one is in the real-dynamic stage, to the other is in the quite quiet bar-area.

The middle part of quiet-bar area is constructed of acrylic. Overhead it is the semi-transparent surface body made of a range of acrylic tubes. From this surface body, after putting the view through projector, people can enjoy the live-show of the stage. So that it works to connect both the dynamic area and the quiet one, to a certain extent. Surround the sky-ceiling, there are LED screens in many sizes and shapes. The subjects playing on the screens also effects on scene of the whole interior space.

The concept of walking-in-air reverie does throughout the whole space. While people walks in X-CLUB, they can feel the vivid theme and definite experience.