

TID 11th 2018 Award
Taiwan Interior Design

公共空間類 TID 獎
The TID Award of Public space

涼涼海之濱
Cool Cool Seaside

一起設計
Atelier Let' s

主持設計師
Chief Designer

辜達齊 Ku Tachi

協同設計師
Co-designer

陳佑中 zon chen

邱承漢 chiu chenghan

攝影者
Photographer

辜達齊 Ku Ta-chi 陳玉媛 Chen Yu-yuan 高雄市政府都市發展局
URBANDEVELOPMENTBUREAU, KAOHSIUNG CITY GOVERNMENT





涼涼海之濱 Cool Cool Seaside



當你過往涼涼的蔚山驛車站旁，有一間全家，再過去是國巨店，然後繼續往前，會看到一整排的店面，多半都是賣吃的。

如果你繼續往前走的話，你会发现有许多的

这些第一组照片里人坐在地上，坐着，它似乎在晒太阳和吹风。这些照片也展示了其他领域或可贵的：像从顾客提供的巨幅的视觉艺术、展览、风景，以及海洋的礁。

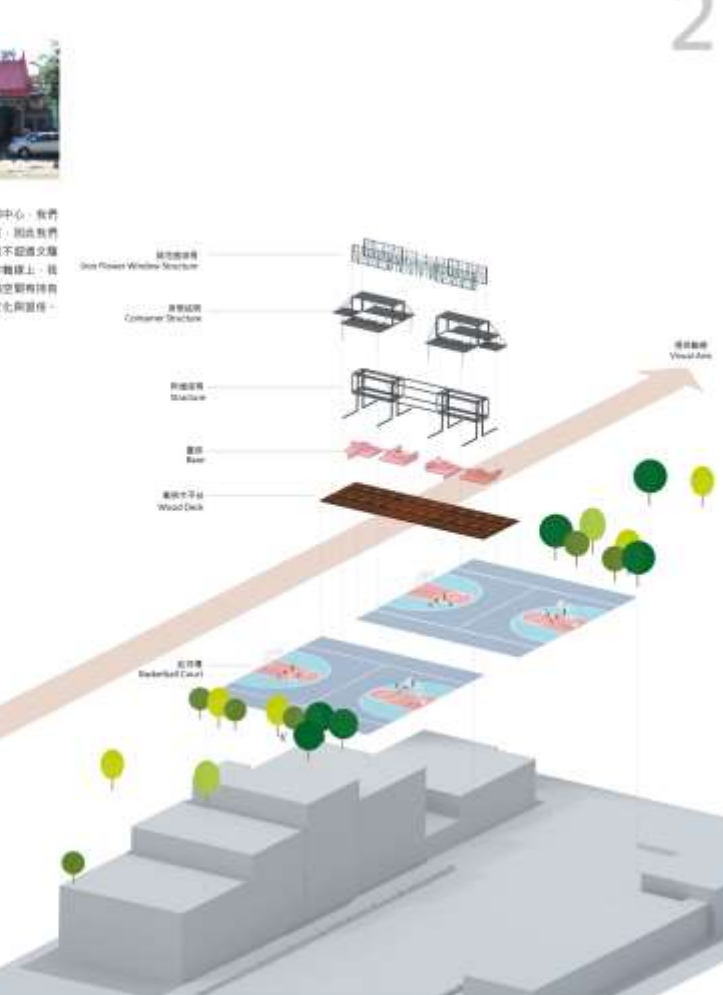
然而，我们很用心的以制造出不是将视觉追求的方式，我们不断的利用媒体，重新介绍给大家。

很幸运的是地，我们很幸运的遇到WALLRIGGS的福推竹老板，他们带来了色彩，更適合涼涼的這裡。

你可以可以划水、打靶、晒太阳、吹海風，就像在海边玩耍，推出一點燈吧，不再需要，不再需要任何一點的設施。



(山) 山莊歷史
 文藝美一直是這個小區的信仰中心，我們的基地位於文藝街的左前方，因此我們盡行了極大的勇氣，整棟高度不超過文藝街的高度，在文藝街兩側的中軸線上，我們把商業接連的結構，中間空間有持育好的开放性，尊重當地既有文化和習性。



(山) 村莊建設
 在有限的預算下，我們必須大量採用現成的素材完成建造翻新，在地塊的周圍與山莊廟剛好可以成為舞臺的基礎，把兩層樓的空間，再挑出二平米寬的場地將原有利用作為樓梯的結構重新修繕，以35cm*25cm的鋼型鋼柱支撐，再將新的瓦片安裝上結構，讓結構穩定，南方引進新的材料與材料採用了鋼構的樓梯結構，提升居民生活品質的鄰里關係。



(山) 莊設計
 辦公室是很多人對於這個區的世界記憶，利用這個，選擇、重新塑造出各種不同的多樣性的建築，展現的現象、山、外海維多利亞，在於保留這個空間的結構與細節，具體而具體的修復條件，採用了充滿靈性，最好看是展示出來於地塊屋空型空，雖然處於地塊，但也是在當地內除了建築的現象，我們想重新面對的現象，因此利用與山莊廟的現狀打空整個花園的條件上，重新面對在地塊上形成優美型的建築，最有趣的讓人感到這個區域的連結。

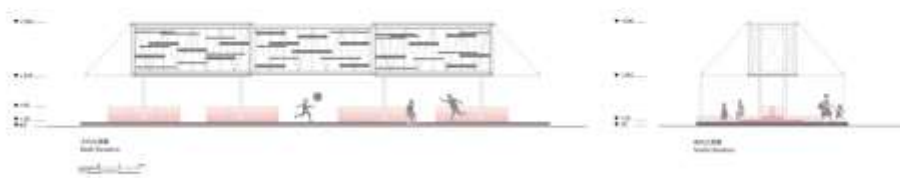




景觀與植栽綠化：
 景觀特色以熟花、樹以常綠樹在綠以點綴，另外花
 台綠草與綠地以點綴，綠草紅色作為主顏色調
 呼應文龍宮廟宇的紅色屋頂結構。

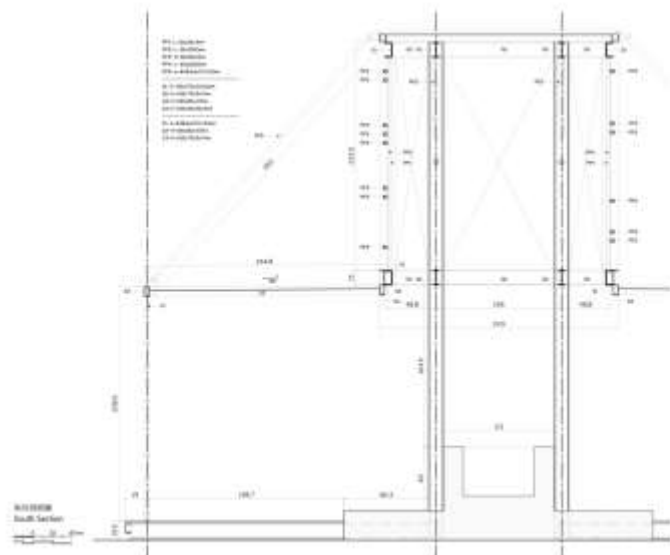


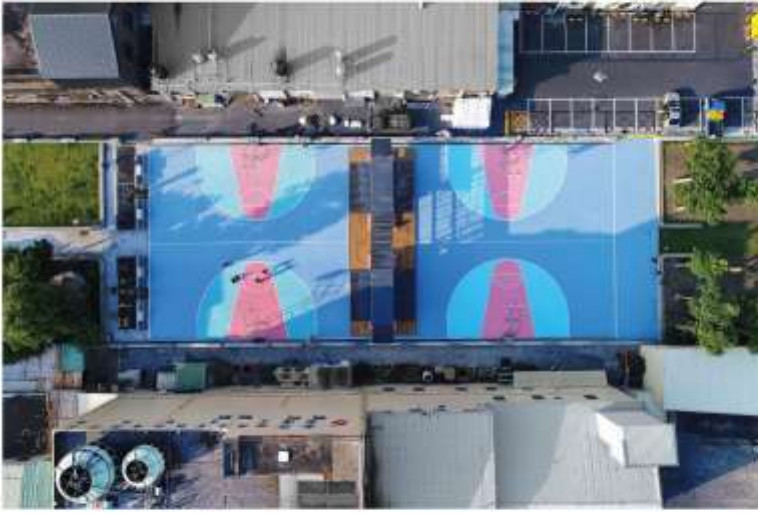
圖騰與文化圖標系統：
 圖標為了呼應歷史與文龍宮廟宇所設計的圖標系統，除了活動中運用與關於中國的傳統圖標系統
 也展現了在地文化價值。



3

4





48001 Activity Plaza



PS-44-涼涼海之濱

涼涼海之濱 高雄通往旗津的鼓山輪渡站旁，有一間全家，再過去是屈臣氏，然後繼續往前走，會看到一整排的店面，多半都是賣吃的，可曾想過這排店家的後面是甚麼嗎？後面是一個哈瑪星人的在地小聚落，它就夾在觀光客熙來攘往的大馬路與海水之間。走進來除了有台灣隨處可見的：居民隨意搭建的瓜棚、廟埕、閒散的盆栽外，還有海景，以及涼涼的風。都市發展局很用心的以整理而不是拆掉重來的方式，將原本就充滿生活感的都市縫隙，重新介紹給大家。很喜歡在地推廣街頭藝術團隊 WALLRIORS 的楊惟竹老師為籃球場做的配色，很適合涼涼的這裡。棚子下可以吃冰、打盹、等上場，吹海風，就像在幫城市按摩，推鬆一點疲勞，不再緊繃，不再壁壘分明，一切都可蔓延互通。

- 材料與構造 在有限的時間下，我們必須大量使用現成的素材完成這座棚架，而現場的四座混凝土座椅剛好可以成為棚架的基礎，節省掉開挖的時間，將兩只二手貨櫃的面板拆解再利用作為棚架的遮陽版與結構，以 15cm*15cm 的 H 型鋼撐起貨櫃，再輕輕的夾住混凝土座椅，讓結構穩定。南方松地埕軟軟的質感緩和了鋼構的嚴肅氣氛，提供居民或坐或臥的輕鬆場所。
- 花窗與浪 鐵花窗是很多人對於哈瑪星的空間記憶，利用鍛造、焊接、彎折塑造出各種不同的象徵性的圖案，常見的有花、草、山、水等線性圖案。在拆除貨櫃立面的結構鋼板後，用框架結構的補強桿件，拼貼了花窗意象，像打開貨櫃展示出屬於哈瑪星空間印象。雖然基地位於港邊，但是在基地內除了鹹鹹的海風，我們很難意識到海的感受。因此利用東西向的陽光打在象徵花窗的桿件上，陰影投射在地面上形成像波浪的律動，是我們企圖讓人感受到跟海洋的連結。
- 回盼歷史 文龍宮一直是這個小區的信仰中心，我們的基地就位於文龍宮的正前方，因此我們壓低了棚架的高度，整體高度不超過文龍宮的屋脊。在文龍宮面東的中軸線上，我們刻意拿掉遮陽的結構，中軸空間有持良好的穿透性，尊重當地既有文化與習俗。總工程費用-170 萬元包含 1.籃球場彩繪 2.貨櫃棚架 3.照明系統

PS-44-Cool Cool Seaside

Cool Cool Seaside Next to the Gushan Ferry Pier that connects Kaohsiung to Cijin is a FamilyMart. Further down the road is a Watsons. Continuing along it is a series of storefronts, most of which are delis and dessert shops. Would anyone have ever wondered what is behind this row of shops? Indeed, if you take some time to get around to it, you will discover a local neighborhood situated just between that bustling road and the pier-side, where the place is decorated with some casually erected melon sheds, a small square in front of the temple, and plenty of randomly placed plantations. Above all, you will also be treated to some waterfront sceneries in the cool breeze as you stand in this subtropical city of Taiwan. Thanks to the Urban Development Bureau, this homelike neighborhood is once again being introduced to the public by means of revitalization as opposed to eradication for something completely anew, opening up this modern city crevice that already brims with liveliness to the local residents. In addition, with the touch of Bamboo Yang, a brilliant graffitist from WALLRIORS, the colors of the basketball court are now in perfect harmony with the atmosphere of this place. Therefore, whether you are here for a nap, or taking your time diving into a bowl of shaved ice, or simply just looking for a chill-out spot, the canopy stands here, welcoming you with its spanning roofs. As if giving a massage to the city, this place helps it shed away some weariness of the everyday life, allowing the vitality to sprawl on without boundaries. Materials and Tectonics Given the limited time, it is necessary to utilize ready-made materials as much as possible in composing the pavilion. The existing reinforced concrete seats conveniently become the foundation of the canopy, saving all the time to be spent on excavation for other parts of the construction. The main structure is disassembled and reformed by two cargo boxes, the side panels of which made into sunshades and the frameworks into structural supports. All of which are then lifted up by 15cm*15cm H-shaped columns erected closely adjacent to the concrete seats, creating the necessary resistance against the sheer force. Finally, the texture of the southern pinewood flooring gives a sense of relaxation in providing an environment for the residents to rest underneath the canopy at ease. Patterned Window Grills and the Wave Various patterns of the window grills often leave vivid impressions to those who visited the Hamasen District. Techniques such as forging, welding, and bending are commonly used to create linear forms imitating images of flowers, grass, mountains and waterscapes. After the structural panels are removed from the cargo box frames, reinforced steel bars are added in respect of structural consideration, as well as to echo with the window grills of the neighborhood. During the day, when the sun moves across the sky, the silhouette of the horizontal bars on the ground reminds us of the sea waves and the ocean that warmly surround us. A Glance of History Temples in Taiwan are always the spiritual centers of townships, and the Wen Lung Gung Temple is no exception. As the project site is located some distance away in front of Wen Lung Gung, the height of the pavilion has thus been carefully calculated to not surpass the height of the temple rooftop. We also intentionally minimized the center structure by removing the sunshade panels in that area to preserve the visual continuity for the view through the central axis of the temple. Total project cost -1.7 million NTD contain 1. Basketball court painting 2. Container pavilion 3. Lighting system