

TID11th2018Award
Taiwan Interior Design

居住空間類/複層 TID 獎

The TID Award of of Residential Space / Multi Level

管宅

Residence Guan

緯圖設計有限公司
V2 Design Co.,Ltd

主持設計師
Chief Designer

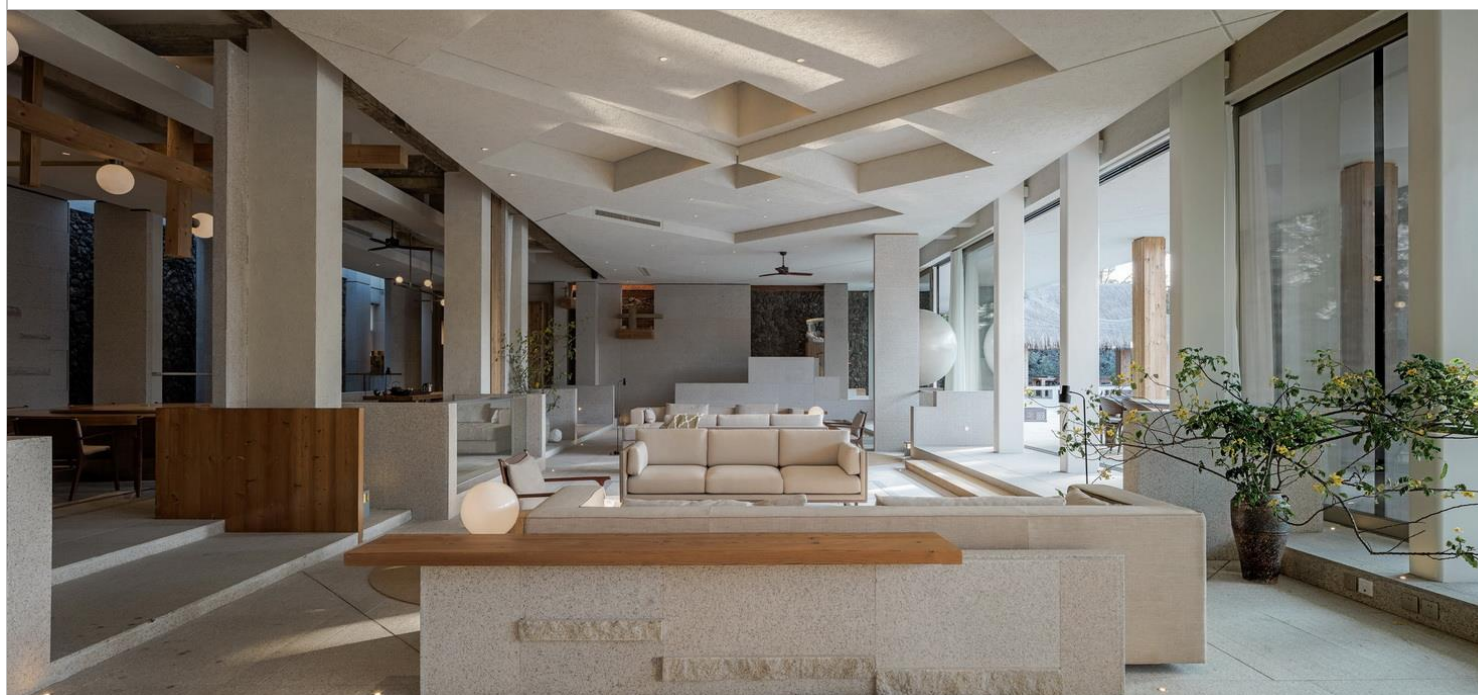
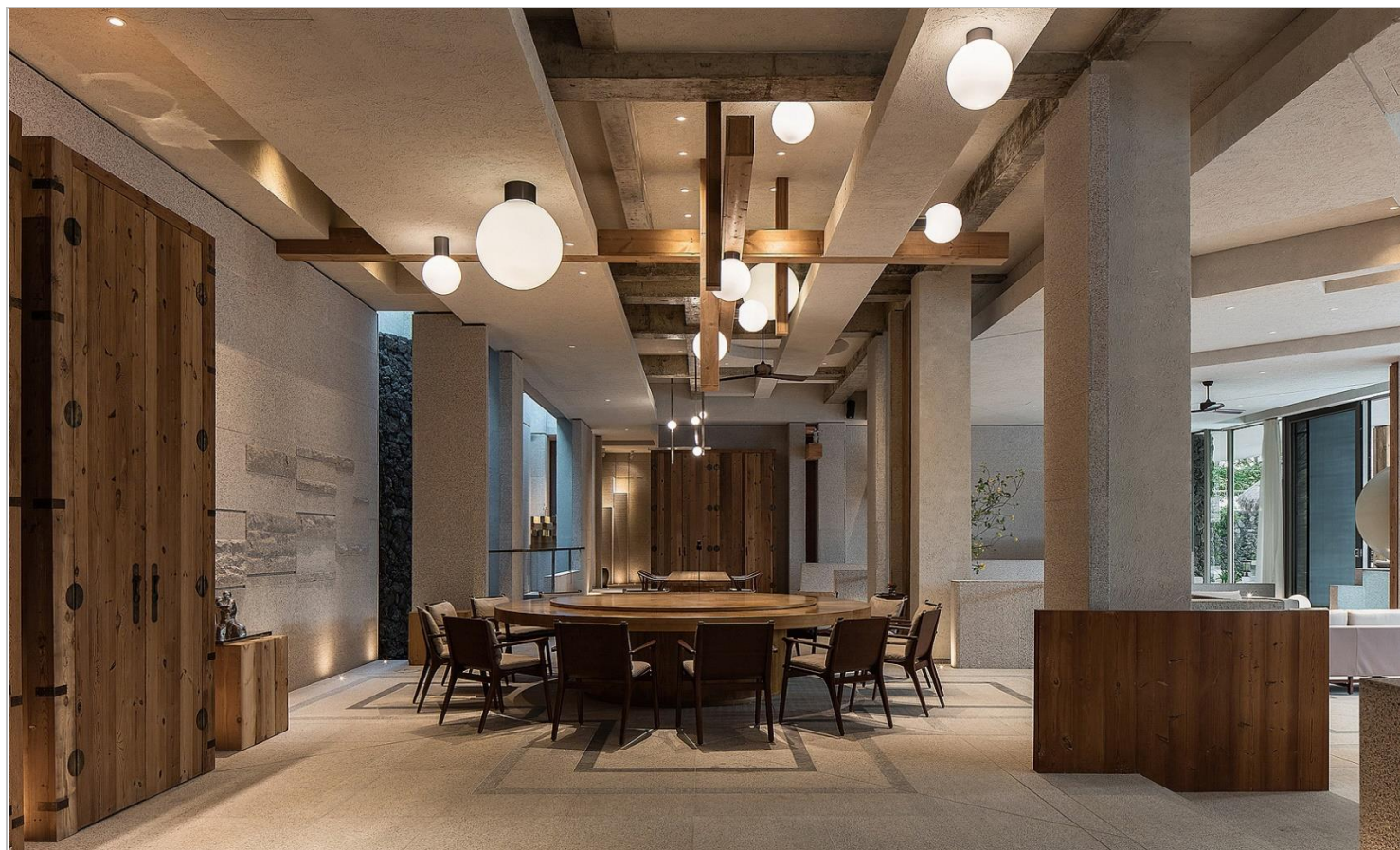
趙睿 Rui Zhao

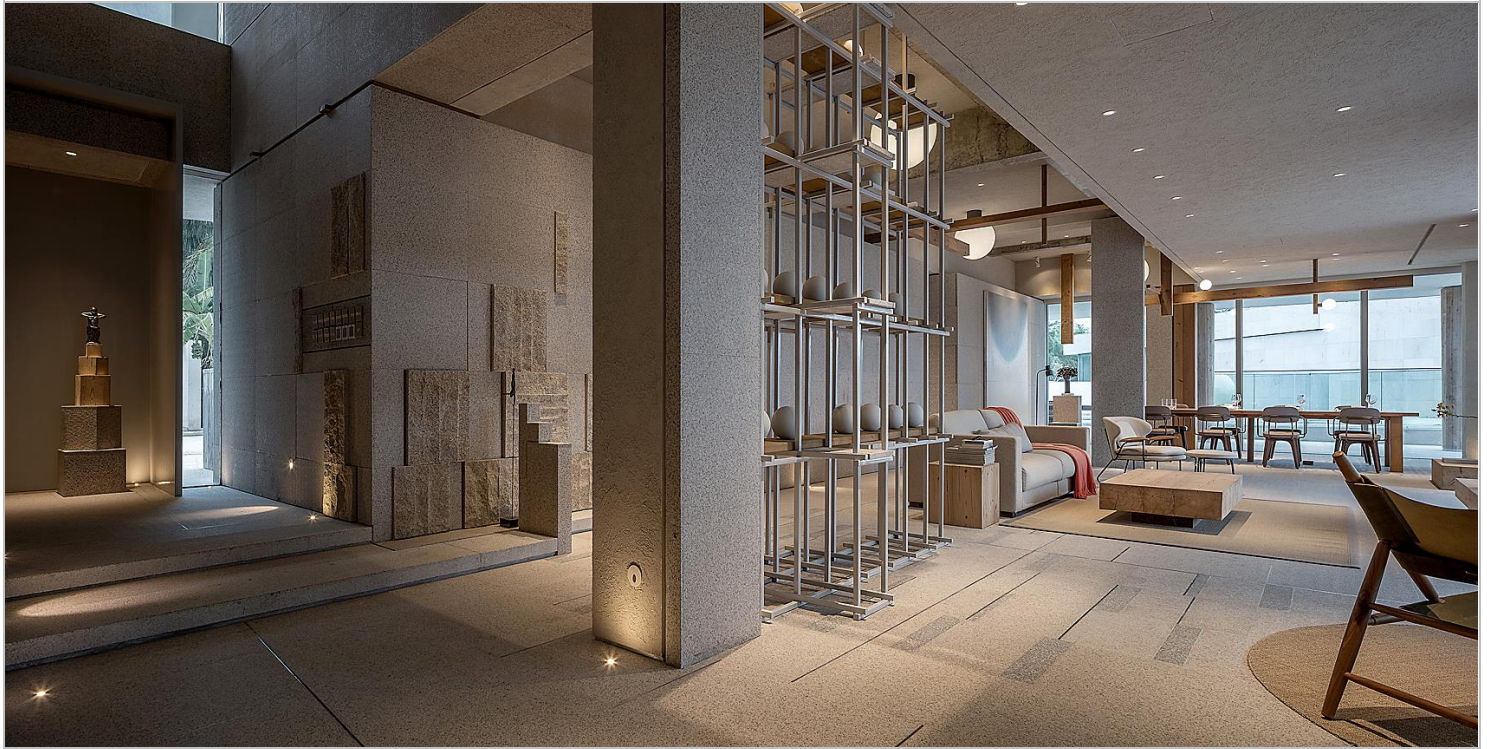
攝影者
Photographer

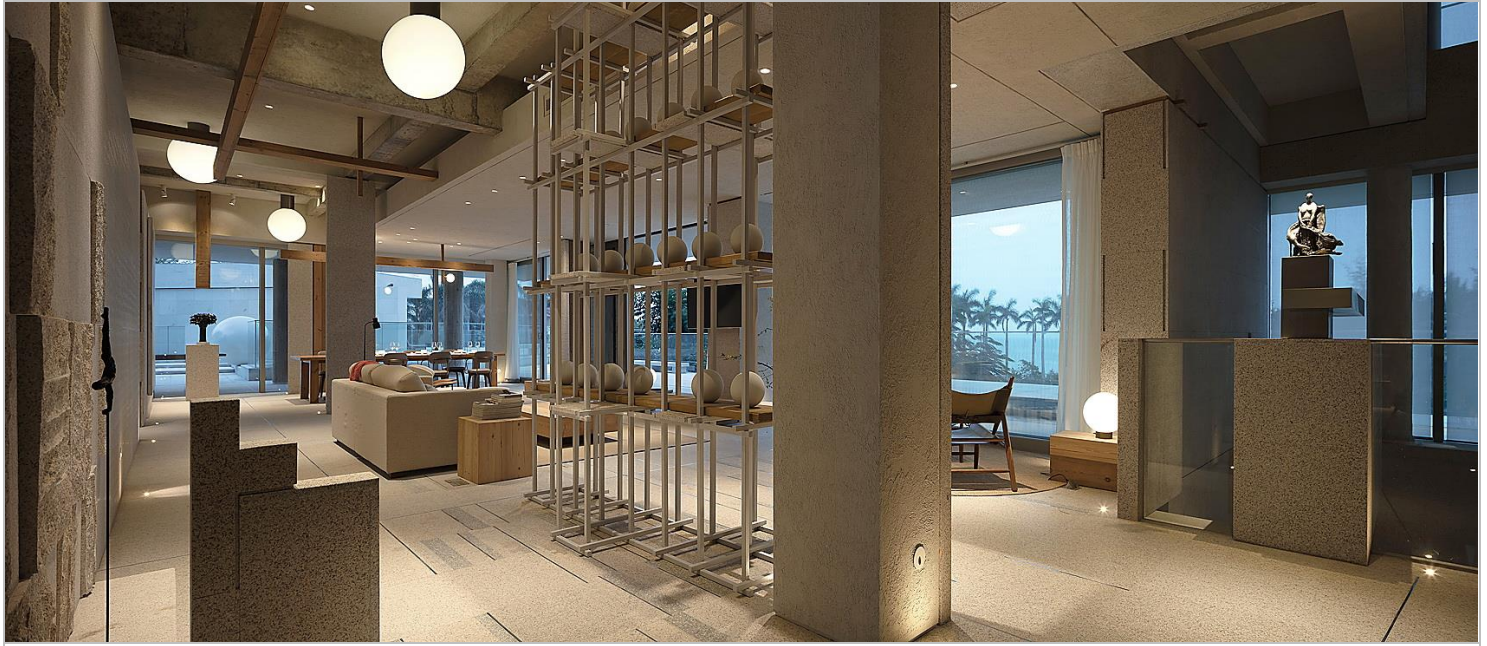
張恒 Heng Zhang 伍啟雕 Qidiao Wu















RS-M-67-管宅

在這專案裡，希望處處都是景色、畫面、光線、意境及生活，因此很貪心的把所有內容都表現在專案中。項目位於三亞海棠灣，是個度假型的住宅及小型私人會所酒店，共有 12 個房間，包括餐飲區、公共區和娛樂區等功能。最初接到項目時，還是一個未完成的建築物，因此任務是對其進行建築和結構改造，從室內到室外完成工程交付使用。三亞當地氣候炎熱，太陽毒辣，由於建築地處海邊，海風特別大，海水鹽分高，腐蝕性強，所以材料的選擇對於整個工程的品質非常重要，最終選用了山東白鑄石，原木，質感漆三種耐久性比較高的裝飾材料。改造時，加建了大面積的平臺，一是為了遮擋太陽，二是橫線條的平臺體塊，很容易與環境融合在一起，讓人與自然更好的互動。活動區上巨大的屋面平臺可以舉行燒烤，酒會或婚禮等大型活動，大大的增強了場地的使用性，也可以很好的跟室內的庭院小道形成強烈的節奏感。室內部分儘量裸露的結構形式，有助於顯示空間的高度，在這基礎上延伸它，形成更美的韻律感。刻畫每一個角落，希望把各種內容都展現出來，雕塑、繪畫、裝置、燈具甚至稻草房、溪流等等，設計師希望將這種熱情和情感流露在項目裡。最終用體塊構成把所有的內容糅合在一起，堆砌出這一作品---管宅。

RS-M-67-Residence Guan

In this project, we hope everywhere is full of the scenery, picture, light, mood and life, so very greedy to show all the content in the project, so we are very greedy to show all the content in this project. The project is located in Sanya Haitang Bay, it is a holiday residence and small private club hotel. There are 12 rooms, including dining area, public area and entertainment area. When the project was first received, it was an unfinished building, so our task is to carry out its construction and structural transformation, to Complete the project and deliver the project. The local climate in Sanya is hot and the sun shimmered harshly, the building is located in the sea, there is the strong sea breeze, the high salt water, and the strong corrosive, all these factors makes the choice of material become very important for the quality of the entire project. Finally, we chose the Shandong white rust stone, logs, and texture paint, cause these three kinds decorative materials are with high durability. We built a large area of the platform, in order to block the sun, in the meanwhile horizontal lines of the platform block is easy to integrate with the environment, it makes people interact better with nature. The huge roofing platform on the activity area can hold large activities such as barbecue, cocktail party or wedding, it greatly enhanced the use of the site, but also can be very good with the indoor courtyard trails to form a strong sense of rhythm. Indoor part structure which exposed as much as possible can help to show the height of the space, and on this basis to extend it to form a more beautiful sense of rhythm. To characterize every corner, and hope to show all kinds of content, the sculpture, painting, installations, lamps and even straw houses, streams and so on, the designer wants to show this passion and emotion in the project. Finally we mix all the content together with the body block to pile up this work---Residence Guan.