

TID^{11th} 2018 Award

Taiwan Interior Design

居住空間類/單層 TID 獎

The TID Award of of Residential Space / Single Level

We can see all the light

路裏設計

Luriinner Design

主持設計師

Chief Designer

彭晨育 CHEN-YU,PENG

吳榆萱 YU-SYUAN,WU

攝影者

Photographer

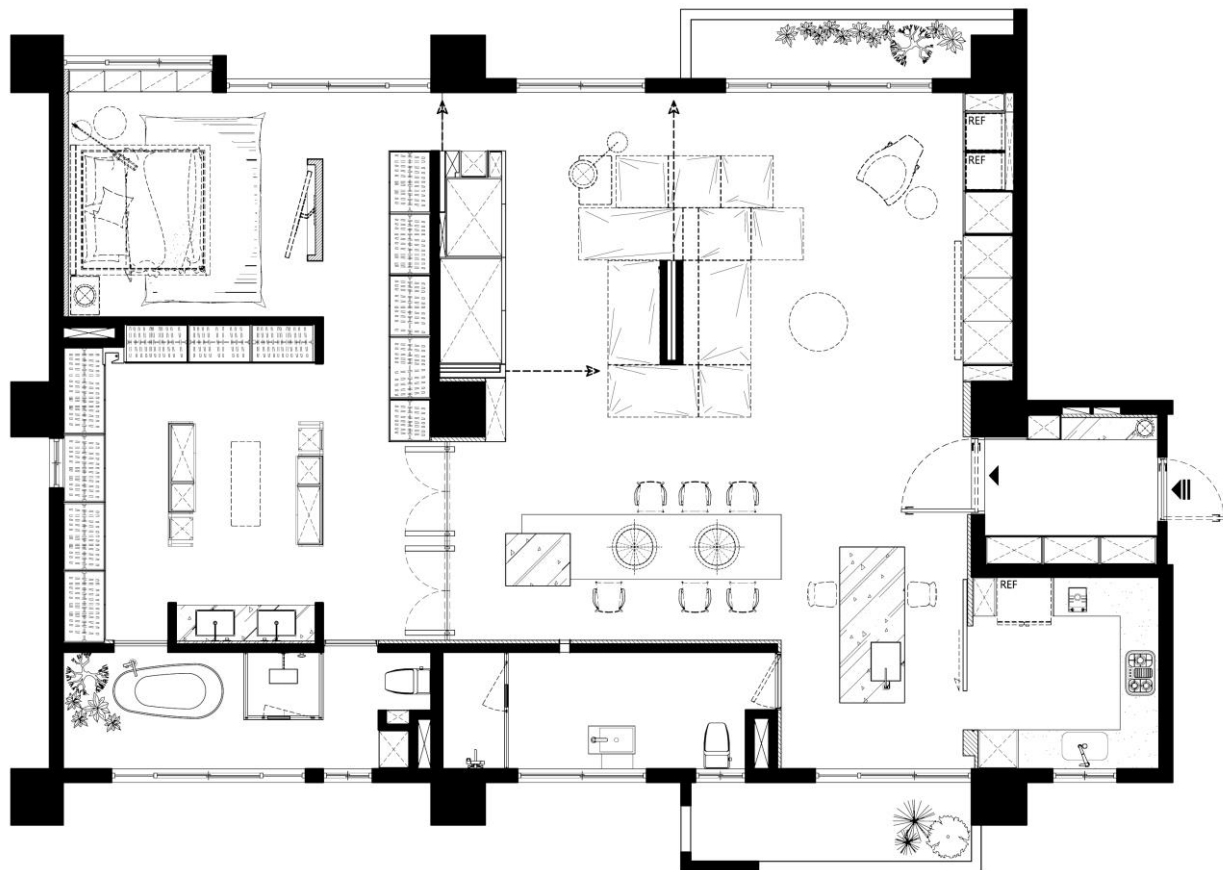
游宏祥 Kyle Yu











RS-S-131-We can see all the light

過渡空間是傳遞生活情感的主角，它既不分割相鄰區域，也不使之獨立，而更像是從封閉轉向開放、由確定轉向模糊、由單一轉向錯綜。本案以開放平面作為架構規劃，串聯行為模式。嘗試跳脫傳統界定，抹去了邊界，使之自然形成空間序列，在住宅內享受一種舒展自我的氛圍。立面線條力求簡潔，連續的大區塊分割、幾何元素運用，除使得視覺上感受空間氣度外，透過牆面開口將裡外貫通，引領日光延伸入內，既是借景也是對景。實用性方面，將各項機能與空間結合隱於無形，也滿足居住者的使用需求，回字型沙發帶來多面向使用，映襯隱藏大型拉門的白色塊體，將空間整合、淨化，創造寧靜、聚攏。材料表現透過藍色皮革、節眼木皮、礦物塗料、黑鏡，使之承載藝術、工法，整體所呈現的美感，明確而清晰。

RS-S-131-We can see all the light

A transactional space is the main part in delivering sensation in life. It does not divide space into sections but create connections in between. It is more likely to change a closed space into opened one; from definite to merged; from one single way to multi-direction. This project is designed under an opened flat layout in which different behaviors were under consideration. We tried to alleviate boundaries, to make the space in a sequential order naturally and to feel the comfortable ambience. Lines of façade are precise and clear, the application of geographical patterns create broadness in this space. The big cut-out connects in and out, leading daylight spreads into inner space. All of this is as an illusion, light brings back outer scene back here. When considering practical use, we have integrated the function of different objects into the space, however residential needs are always stand as priority. Grey-blue modular sofa lies in the middle, surrounds white wall which has sliding door inside. It is a highlight of the space and enhances a calming, purifying visual focus. Its materials such as blue leather, veneer with knots, mineral dyestuff, black mirror inherit traditional art of work. The aesthetic sensation of whole space stands in clarity without spoken words.