

TID^{11th} 2018 Award

Taiwan Interior Design

居住空間類/單層 TID 獎

The TID Award of of Residential Space / Single Level

灰色 20 度 C

Grey 20°C

蟲點子創意設計

INDOT DESIGN

主持設計師

Chief Designer

鄭明輝 armin

攝影者

Photographer

嘿!起司 Hey!Cheese

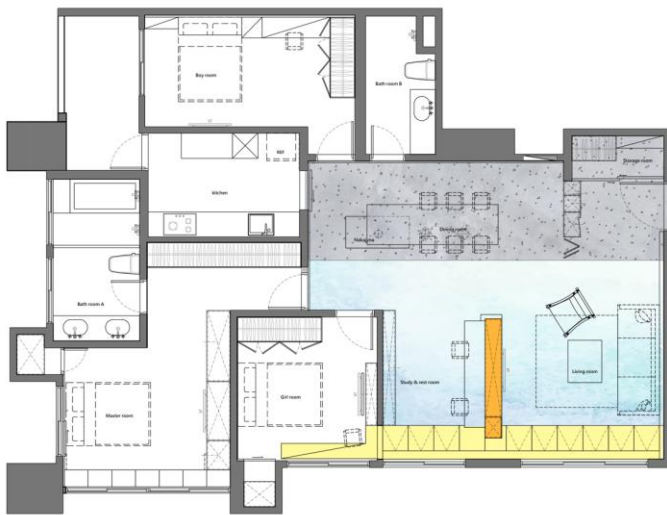




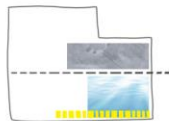




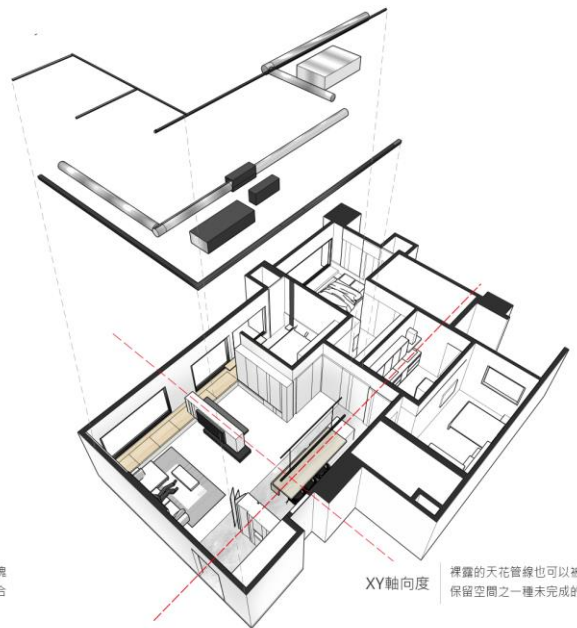




PLAN



藉由地板的材質將空間分成兩個區域
利用水平向度的延伸將空間重新整合



XY軸向度

裸露的天花管線也可以被整合
保留空間之一種未完成的態度

RS-S-14-灰色 20 度 C

人生不見得非黑即白

有時候更多的是灰色地帶

加上 20 度 C 是人體感到最舒服的溫度

很適合我想在這空間營造的心情

整個空間運用了低彩度的配色

因為低彩度給人就是一種樸實簡單的态度

很像我認識的這個屋主個性

個性很直白爽朗但實際上卻很樸實

屋主喜歡招待朋友到家裡玩

所以我們在主要設計核心上就是以中島為主

利用地坪界定兩個區塊

灰色無縫地坪隱涵著土地從入口延伸到餐廳

透過皺褶的鐵件縫隙隱約看見土地上長出的中島

區隔的白色磁磚地面坪象徵水的意象

電視像是牆懸空在水面上的量體

在設計手法上運用漂浮的概念讓空間平面更加流動

延伸的窗邊臥榻連繫著客廳與書房

裸露的天花及管線保留一種未完成的質感

有時候設計就是一種未完成

因為最終還是要交給使用者去填補吧

RS-S-14- Grey 20°C

Life is neither black nor white.

Sometimes life is filled with more grey areas.

Twenty degrees Celsius is the most comfortable temperature felt by the human body and is very suitable for the mood I want to create in this space.

For the overall space, I adopt the color combination of low chroma, which represents a simple and easy attitude, just like the owner's personality as I understand it: direct, hearty, and unassuming.

The owner likes to invite his friends home, so the principal core of the design lies in the island.

The floor is used to define the two areas.

The grey seamless floor with the hidden meaning of the land extends from the entrance to the dining room.

Through the wrinkles of the iron materials, we can vaguely see the island growing out of the land.

The area with the white tile floor symbolizes the image of water.

The TV is like the mass of the wall hanging over the water.

As for design technique, the concept of floating facilitates the space plane to flow.

The extended couch by the window connects the living room and the study room.

The bare ceiling and piping preserve an unfinished texture.

Sometimes design can consist of an "unfinished" form because the users will eventually fill the gap.