

TID^{11th} 2018 Award

Taiwan Interior Design

居住空間類/單層 TID 獎

The TID Award of of Residential Space / Single Level

置入

Placement

蟲點子創意設計

INDOT DESIGN

主持設計師

Chief Designer

鄭明輝 armin

攝影者

Photographer

嘿!起司 Hey!Cheese

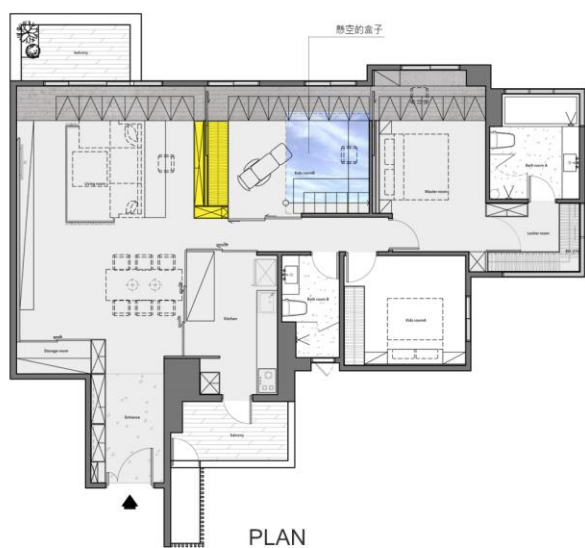
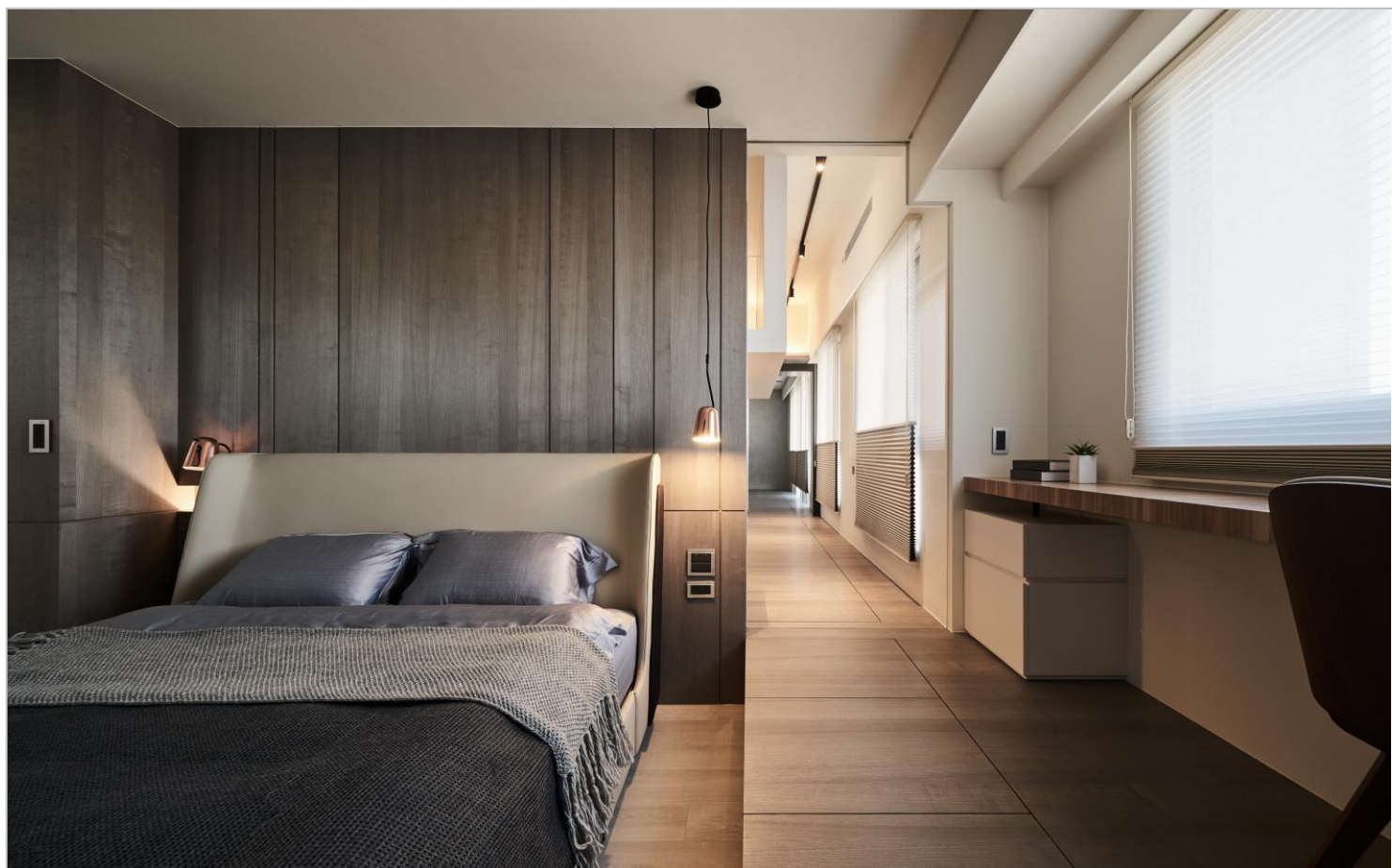




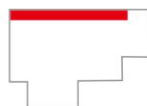








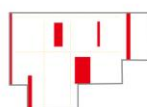
連結



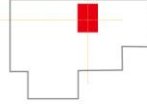
開放



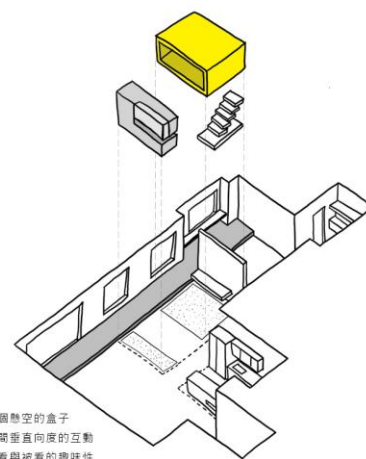
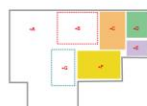
端景



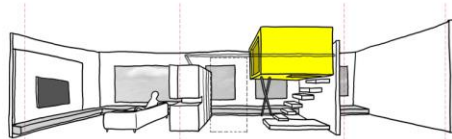
置入



彈性



置入一個懸空的盒子
增加空間垂直向度的互動
也有種看與被看的趣味性



臥榻的真穿 形成一個可以在家散步的回字型動向

RS-S-15-置入

我們企圖重新定義家的想像
在空間中置入一個方盒子
增加空間中垂直向度的趣味
也產生空間與人之間不預期的互動
將書房與客廳的牆面打開
利用一條臥榻貫穿客廳書房小孩房及主臥
形成格局上的回字形動線
有一種在家散步的流動感

我們置入的這個盒子
變成空間中的視覺焦點
當我們遊走在空間裡
因為一些縫隙或是牆體的脫開
讓人可以在行進中看見不同表情的盒子
就像小時候我們玩躲貓貓的秘密基地
一種看與被看的遊戲

這個秘密基地的盒子
就像一個懸空的樹屋
挖開的洞口嵌入看似不穩定的飄浮階梯
像小時候爬牆的意象
爬進這秘密基地後
就好像一個發光的盒子
讓人可以躲在裡面窺探四周的秘密風景

RS-S-15- Placement

We have attempted to redefine the imagination for a home by placing a square box in the space as a way of playing with the vertical dimension within the space while creating an unexpected interaction between the space and the people in it.
The walls of the study room and living room are open.
A couch is used to connect the living room, study room, children's room, and master bedroom, forming a rectangular ambulatory plane in the space pattern and a flowing sense, reminiscent of taking a stroll at home.

The box we placed becomes the visual point of the space.
When we walk around the space, due to some seams or the detachment of the wall, we can see the box as different expressions in motion.
Like the secret hiding spot when we played hide-and-seek as children, this space becomes a game of seeing and being seen.

The box of this secret spot is like a hanging tree house.
The opened entrance is inlaid with seemingly unstable floating steps, which represents the image of climbing a fence in childhood.
Once inside the secret spot, it is like a lightening box where people can hide and observe the surrounding secret scenery.