

**TID**11<sup>th</sup>2018Award  
Taiwan Interior Design

居住空間類/單層 TID 獎

The TID Award of of Residential Space / Single Level

空間浮線

Floating Lines

近境制作

DESIGN APARTMENT

主持設計師

Chief Designer

唐忠漢 Tang, chung-han

曾勇傑 Tseng, yung-chieh

協同設計師

Co-designer

余劭珊

























## 空間浮線 Floating Lines

The whole space is imbued with the concept of framing linear contours from the metal details of the ceiling to the various shapes within the space. The contrast of the flat surfaces and the flowing contours gives the whole area a feeling of depth and linear tension. Behind the kitchen island is the family shrine. A new design where a metal frame is embedded into the wall offers a break from the traditional altars, and draws on the overall concept to create a layout that combines visibility with functional use of space.

The concept of floating linear architecture extends to the rest of the area. The chandelier above the dinner table becomes another visual focal point via the means of linear contours, which is continued in the lighting fixtures on the walls. By breaking up the boundaries between space and furnishings, the interrelationship of the two becomes even more centered on the overall design concept.

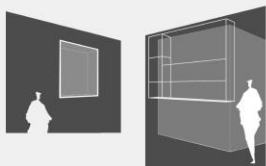
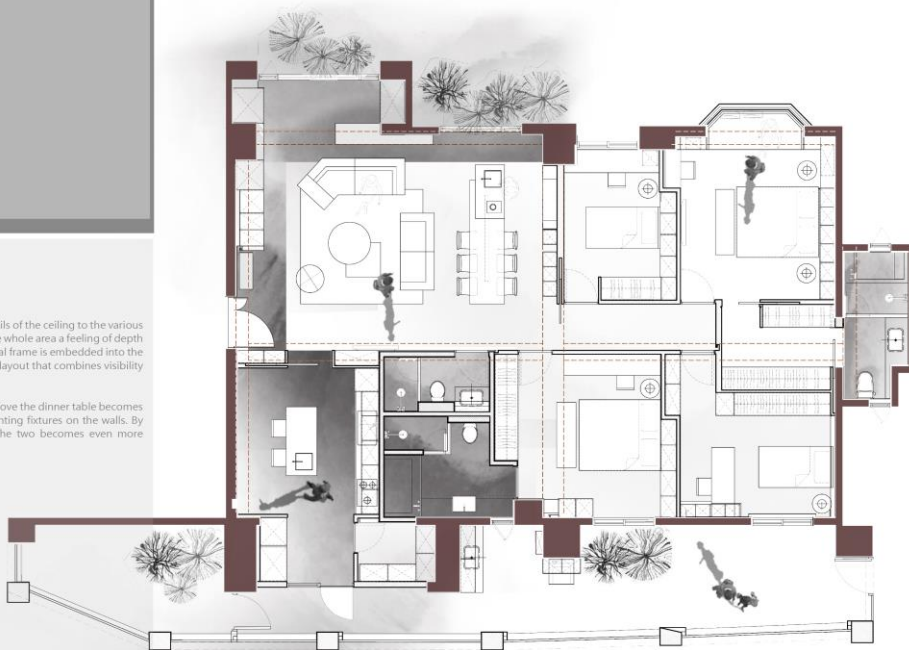


DIAGRAM ■



PLAN ■



RS-S-220-空間浮線

整體空間透過邊框勾勒的概念,從天花的鐵件細節發散到空間各種形體,透過實體的面與線條框架的對比,讓空間增加立體感及線性的張力。空間中在中島區域的後方為家中神明廳位置,透過新的設計思維將金屬的框架量體嵌入牆體之中打破傳統神明桌在空間中的型態,讓整體概念形成一道展示櫃體結合機能型態的布局方式。延續浮線架構的延伸,餐桌上的吊燈以線性的概念組成另一個視覺上的焦點並延續至壁面燈具,突破擺設與空間的界線讓互相關係更能聚焦於整體設計概念之上。

RS-S-220-Floating Lines

The whole space is imbued with the concept of framing linear contours, from the metal details of the ceiling to the various shapes within the space. The contrast of the flat surfaces and the flowing contours gives the whole area a feeling of depth and linear tension. Behind the kitchen island is the family shrine. A new design where a metal frame is embedded into the wall offers a break from the traditional altars, and draws on the overall concept to create a layout that combines visibility with functional use of space. The concept of floating linear architecture extends to the rest of the area. The chandelier above the dinner table becomes another visual focal point via the means of linear contours, which is continued in the lighting fixtures on the walls. By breaking up the boundaries between space and furnishings, the interrelationship of the two becomes even more centered on the overall design concept.