

TID^{11th} 2018 Award

Taiwan Interior Design

居住空間類/單層 TID 獎

The TID Award of of Residential Space / Single Level

晴. 禾之家

Sunny Apartment

十分建築|王喆建築師事務所
Very Studio | Che Wang Architects

主持設計師
Chief Designer

王喆 Che Wang

郭小甄 Colette Kuo

協同設計師
Co-designer

林祐年 You-Nian Lin

翁若婷 Jo-Ting Weng

陳嫻瑋 Chi-Wei Chen

攝影者
Photographer

Studio Millspace 汪德範 Te-Fan Wang

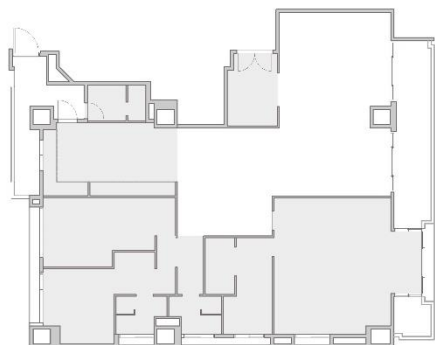




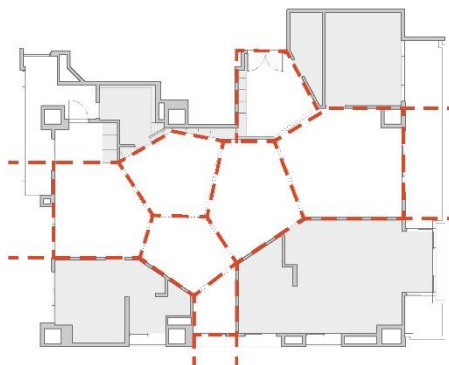




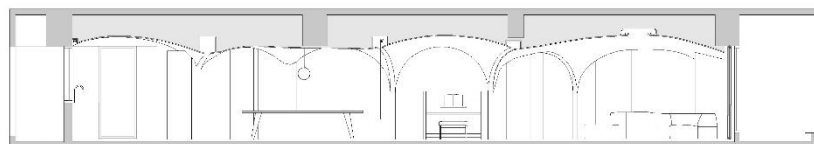




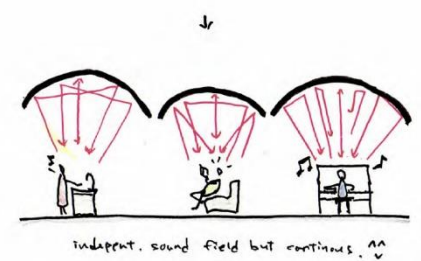
before



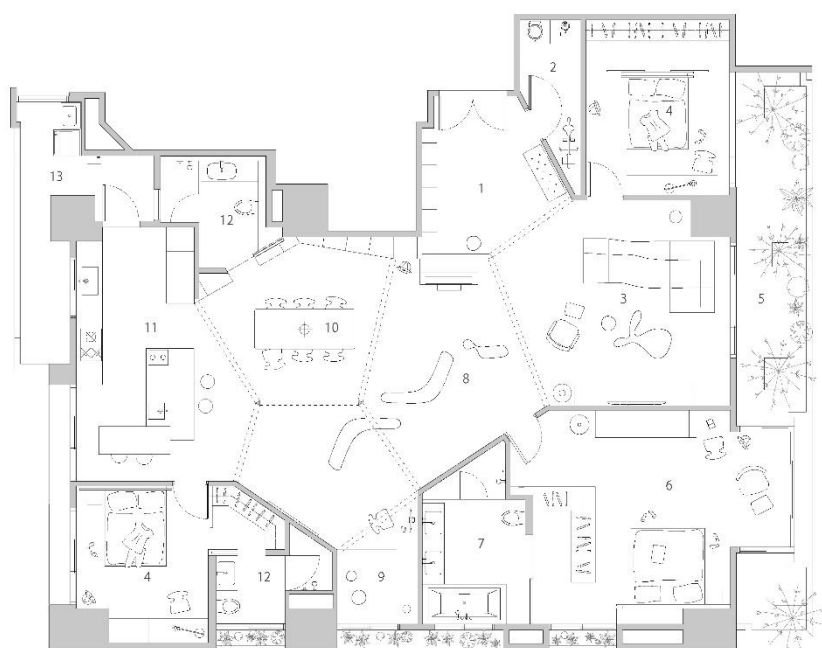
after



Section 剖面圖 1/80



Concept Sketch 概念手繪



Plan 平面圖 1/80

- | | |
|--------------------|---------|
| 1 Entrance | 1 入口玄關 |
| 2 Storage | 2 儲藏室 |
| 3 Living Space | 3 客廳空間 |
| 4 Bedroom | 4 臥室 |
| 5 Balcony | 5 陽台 |
| 6 Master Bedroom | 6 主臥室 |
| 7 Master Bathroom | 7 主臥室衛浴 |
| 8 Piano Space | 8 鋼琴室 |
| 9 Reading Space | 9 閱讀室 |
| 10 Dining Space | 10 餐廳空間 |
| 11 Kitchen | 11 廚房 |
| 12 Bathroom | 12 衛浴間 |
| 13 Working Balcony | 13 工作陽台 |

RS-S-25-晴. 禾之家

基地位於台中典型的集合住宅內。於原始格局中，三面外牆的開口被房間及衛浴隔間阻隔了通風採光，室內公共空間僅南向具朝向社區中庭的開口。這與業主，及我們期待中理想的家有很大的差距。我們思考著居住和生活的本質為何，提出了三個主要的策略：1. 空間流動：業主期待新的家能有開敞且動態的空間，我們在平面中置入了以五角形所組合的新空間秩序，打破原矩形且禁錮的室內公共空間，自然而然地讓空間產生了流動性，幾條界定空間的斜牆創造了視線與動線的延伸，並讓日光灑於其上而形成時間的印記。2. 空氣流動：機能置入新的空間秩序內整合後，西向及北向的開口也因此解放了，公共空間除了有面向的日光外，空氣也因此產生了自然流動的機會，風提升了室內生活的舒適性。3. 聲音界定：在這流動連續的空間中，我們利用聲音的差異作為空間的柔軟界定，於每個五角形規線中設置穹頂形式之天花，使生活的聲音反射凝聚，隱性且模糊地定義出幾個不同生活機能的聲音場域。而穹頂相接處之拱形線性照明，並創造出自然且豐富的空间層次與深度。我們期待在這案子，以一種新的平面及剖面形式，開展出一種具流動性的居住形態，與日光有關、與空氣有關。

RS-S-25- Sunny Apartment

Sunny Apartment is located in Taichung, one of the typical units of Taiwanese housing. In original plan, light and ventilation of public space were blocked by rooms, only the south has an opening. It was far from the ideal home we expected. Therefore, we propose three strategies from the essence of living and life: 1. Flowing Space: A new space order of pentagon was placed into the plan. Then the fluidity and dynamicity of shared space is caused naturally. Oblique walls delimiting the space simultaneously create an extension of the sight and circulation, and the sunshine on it to form the trace of time. 2. Flowing Air: After integrating the functions with the new pentagonal space order. The opening of north, west and the south sides are released, not only the sunlight is introduced in addition the air flow into the shared space naturally. The quality of space and the comfortability of life are enhanced with the breeze. Definition of Sound: Create sound differences in the space. 3. Sound Fields: The space is flowing and continuous. We would like to define soft boundaries of the space by sound. Therefore the Dome-form ceilings are placed in each pentagonal spaces to cause the sound of life reflected and concentrated to create several sound fields to define functions of life. And the curved lighting from the gap of dome also creates a rich spatial layers and depth. In this project, We look forward to create a new living with new order of plan and new pattern of section. All about Light, Air and Sound.