

# TID<sup>11th</sup> 2018 Award

Taiwan Interior Design

居住空間類/單層 TID 獎

The TID Award of of Residential Space / Single Level

空間流動

Space of Flows

新域創作

NTID

主持設計師

Chief Designer

林之豐 LIN,CHIH-FENG

協同設計師

Co-designer

許家福 HSU,CHIA-FU

攝影者

Photographer

鍾崴至 CHUNG,WEI-CHIH







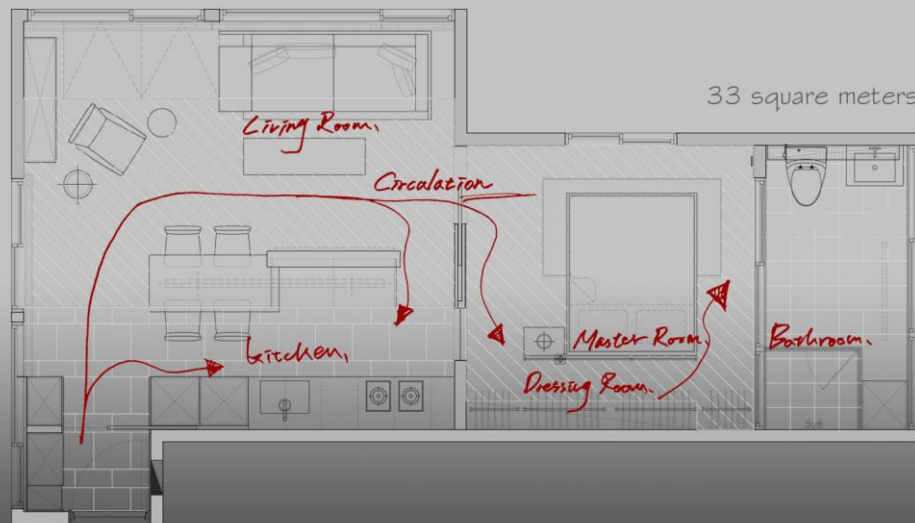














RS-SH-20-空間流動	RS-SH-20-Space of Flows
<p>呼應建築本體採光,格屏採用穿透材料,且減少視覺高度以上的量體,使其空間視覺放大,原衛浴拉門大面採光特點,換上了條紋玻璃增加隱私性,利用鐵件設計幾何造型,透過光影增加趣味性,為獨居使用者的動線設計,空間中的量體,中島、隔屏特意拖開,佇立於空間中自然形成兩側動線,採用拉門讓主動線流動,使用者行走軌跡自由流動如同大坪數般,使用者提出的開放更衣間為小坪數帶來課題,半透明隔屏不僅區劃出開放更衣室,且為空間帶來視覺層次的美感,改變使用者傳統沙發使用習慣,客制臥榻,利用其側邊高度空間,增加小坪數的收納量</p>	<p>Corresponding to lighting of the building itself, the screens are made of transparent materials. Masses over the visual height are reduced, which enlarges the spatial vision. Sliding door in the bathroom was originally set with lighting, but now reeded glass replaces it in order to add privacy. Geometric shape made of iron components are used to design, and the shadow and lighting increase the amusement. Traffic line design for solitaires For the mass in the space, kitchen island and screens are intentionally removed to another site. Traffic lines on both sides are naturally formed. Sliding door is used for the main traffic line. Users can walk without obstacles just like being in a space with high-ping. Open changing room proposed by the user brings us a challenge. Semi-transparent screens not only divide out the changing room, But also bring aesthetics of visual gradation in the space. Change the user's habit of using traditional couch. Customized couch uses the spatial heights on its side edge to increase the storage of space with low-ping.</p>