

**TID** 11<sup>th</sup> 2018 Award  
Taiwan Interior Design

工作空間類 TID 獎  
The TID Award of Working Space

MING 皮革工作室  
Ming leather studio

新澄室內裝修工作室  
New relax interior design

主持設計師  
Chief Designer

黃重蔚 Johnson

攝影者  
Photographer

墨田工作室 Moooten studio







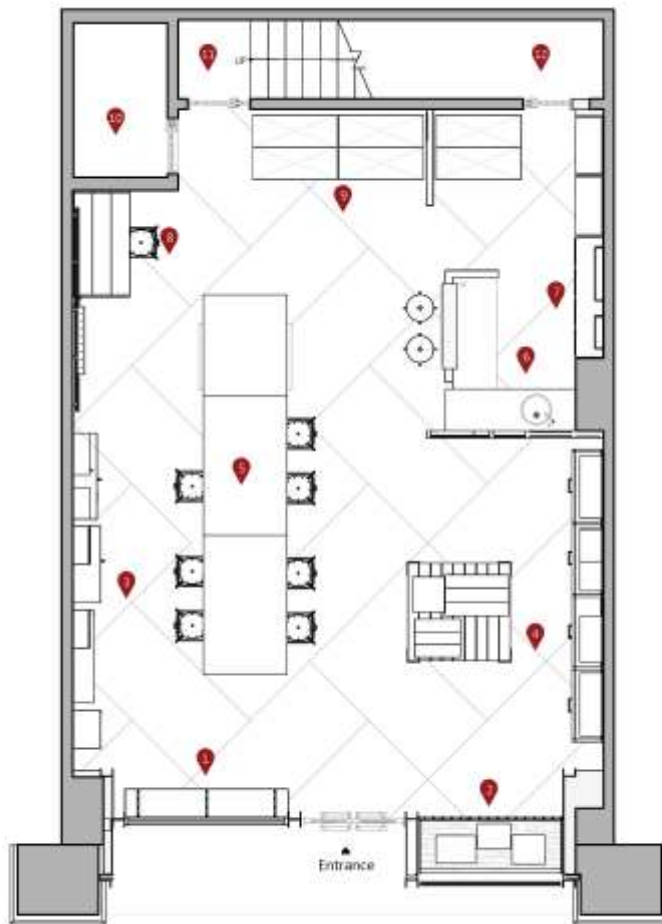












1. 手作區 Homemade Area
2. 櫥窗展示區 Window exhibition
- 3-4. 展示區 Display Area
5. 手作區 Homemade Area
6. 工作區 Workspace
7. 茶水間 Pantry
8. 擺放區 Swing Area
9. 皮革展示區 Leather display
10. 廁所 Toilet
11. 樓梯 Stairs
12. 倉儲區 Storage

#### WS-63-MING 皮革工作室

本案位於臺灣竹北市的手工皮件工房。業主為手縫皮件師傅，長期耕耘手縫皮件製品，希冀能在竹北成立一間體驗手作生活的皮件工房。過程中，設計師造訪多間皮革工廠，經過時間的鑽研，設計團隊期望透過開放式的設計，便於進行皮件手作交流，讓各個來自不同區域的人，在同個空間達到情感交流。整體空間為了呈現 18 世紀 60 年代英式舊工廠的氛圍，設計規劃上以電影場景處理的手法，牆面上粗曠的仿飾漆，管線裸露卻不凌亂，地坪材質為仿銅板磚不僅耐穿且耐久性長，穀倉門的設計更呈現英國工廠的將就感。一個全新皮件工房的複合式使用型態，此空間以體驗手作教室、展示皮件為主，為了呈現皮件自身的色彩及紋理，以及隨作為整體的基礎底色，細節以舊木紋的材料元素、金屬鐵件作為搭配，不同異材質的銜接使粗曠的工房交織出自然溫潤、不修飾的室內氛圍，透過空間上的鋪排使人慢慢沉澱，在沉靜中感受皮革手作的溫度，讓更多人體驗到手縫皮件的工藝魅力。

#### WS-63-

The project is a handmade leather workshop located in Zhubei city, Taiwan. The owner is a leather artisan who has worked on leather over a long period of time, she had hoped to establish her own handmade leather workshop. In the design process, the interior designer has visited several tannery, and after studying on the case for a while, the design team hoped to connect people from different regions during the process of the handcrafting, so they decided to go with an open floor plan, letting people interact in this open space. The whole space aims to replicate the vibe of an old English factory in the 1860s, the designer uses the technique that is usually used in a movie scene: the rough paint in the wall, the orderly arranged exposed pipe. The floor uses tiles that stimulates steel plates, which can last a long time, and the barn door is also presenting the "make-do" feeling of an old English factory. A new multi-functional form is used in this leather workshop. The primary function of this space is to display the leather goods, and to provide an open space for the handmade workshop. By using a gray palette, the designer emphasized the color and texture of leather. Also by adding the details with rough materials, a natural untrimmed feeling comes through the worn wood and corroded metal in the details. Through the layout of the space, minds settles while feeling the warmth of leather, letting more and more people experience the beauty of handcraft.