



商業空間類/零售空間 TID 獎
The TID Award of Commercial Space/ Retail Space

Communion

317 design studio 易其設計有限公司
317 design studio

主持設計師
Chief Designer

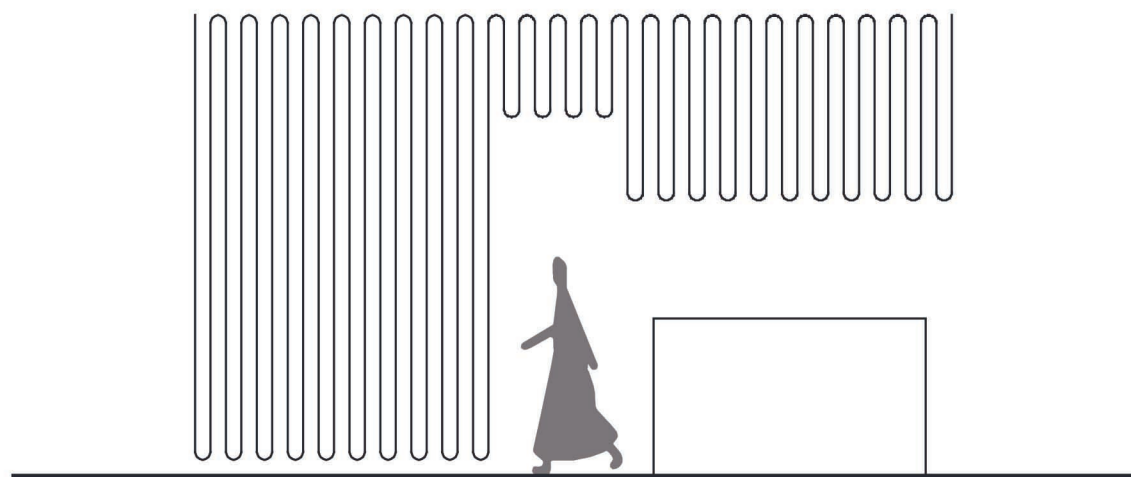
高彩雲 Elena Kao

林柏璋 Po Chang Lin

楊凱閔 Kenny Yang

攝影者
Photographer

游宏祥 Kyle Yu



Communion

我們，一直在尋求‘ 什麼是真正的美麗’？

如果，我們的眼睛能看的到靈魂的美，而不是外在，
那麼我們對於理想的美麗將會有很大的不同。

一切的核心始於這次業主的第一次對話開始。
當我們在重新思考‘ 何謂美’時，立即意識到人的外在、心態與情感相互影響產生的反應。於是決定將這樣對於“ 不同的審美感受” 轉換為空間意象來維持此品牌的主要理念。

We are always seeking a tangible definition of what “real beauty” is?

If our eyes only saw souls instead of bodies, how very different our ideals of beauty would be.

This is a collaboration with an selective shop owner : a project that started merely with a conversation.
As we revisit the conversation, we were able to reignite the chemistry; we could decipher the most important components to be human appearance, mentality and sensibilities.
We started to preserve the brand identity by transforming the space into a notion with aesthetic sensibilities.







為了滿足客戶的需求，我們置入了一個具有連續性弧型的懸掛分隔量體區分了兩個獨立的銷售空間，最大的挑戰在於為來店的消費者提供獨立卻具有連結性的開放空間，我們期望人們走過或駐留此空間時，能夠感受到兩個空間的流通性及聚合感，體會到透過此量體去呈現一種‘模糊的關係’

The biggest challenge was to create two split retail spaces, with still being able to provide an open space for consumers.

It was paramount to maintain connectivity and a sense of togetherness between the spaces. we wanted make this ‘a relationship without a relationship’ when the people walk through and stay below the suspension partitions.



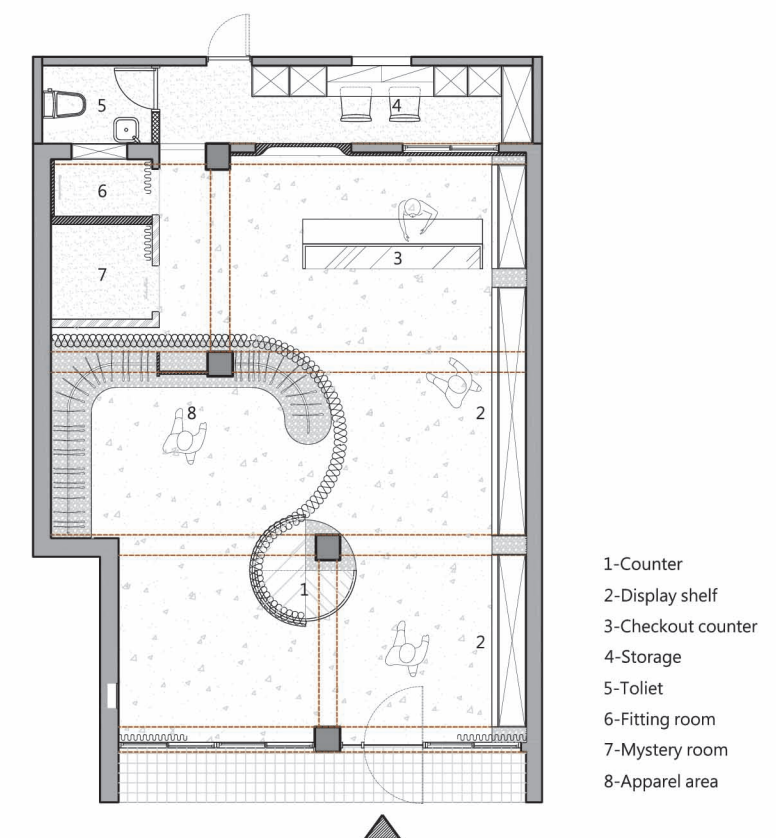


利用暖色調及粗糙完成面材料，修復現況的水磨石地板以及懸吊軟性的量體幫助我們在空間之中置入一種“和諧互動”的美學。

相反的，從女性首飾的意象甚至是心中那個純淨的靈魂轉化的過程之中，試圖的讓這間更獨特、更具有簡約色調的商店跳脫出以往典型的商店設計。

Applying warm tones and rough-hewn material, restoration of terrazzo floors, and soften fabric fixtures helped us insert a ‘harmoniously interaction’ aesthetic inside the space.

We hoped to achieve a minimalistic yet urban tone which would directly contract with typical retail spaces in Taiwan: to do this we amplified simplicity and took inspiration from the human soul and accessories that could compliment.









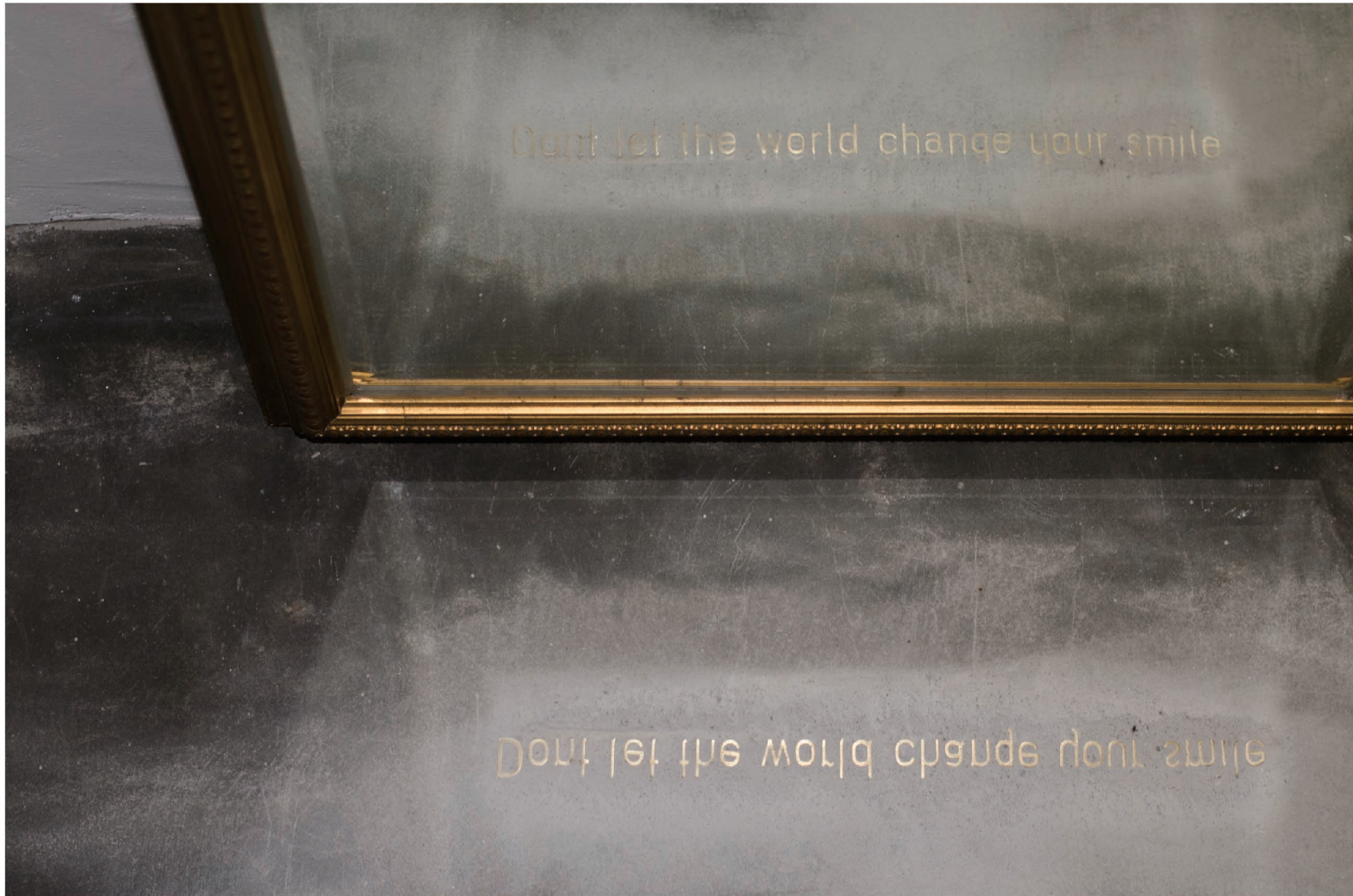






連續性的懸吊軟性量體靈感來自於女性脖子配戴項鍊的垂吊性配件，透過女性優雅的姿態及配戴飾品產生的自然垂墜感衍伸出帶有自然紋理及有機形態的機能櫃體。

The suspension partitions display an ethereal elegance that can be aroused from. Natural texture and organic shape display shelves and counters personify the dignified posture and pure soul inside a female.



我們認為在這裡，在這個空間發生的有趣事情，敘述的只是同一個故事，反映著這間商店的精神標語”別讓這個世界，改變你的笑容”。

We believe that synergy does not have to be attained from ingredients that are all the same. As not all things are produced in the same place this brings realism into our idea.

We hope to embody this through design, innovation and the creation of this retail space. The space speaks for itself, as less is more.

Communion

我們，一直在尋求‘什麼是真正的美麗’？如果，我們的眼睛能看的到靈魂的美，而不是外在，那麼我們對於理想的美麗將會有很大的不同。一切的核心始於這次業主的第一次對話開始。當我們在重新思考‘何謂美’時，立即意識到人的外在、心態與情感相互影響產生的反應。於是決定將這樣對於“不同的審美感受”轉換為空間意象來維持此品牌的主要理念。為了滿足客戶的需求，我們置入了一個具有連續性弧型的懸掛分隔量體區分了兩個獨立的銷售空間，最大的挑戰在於為來店的消費者提供獨立卻具有連結性的開放空間，我們期望人們走過或駐留此空間時，能夠感受到兩個空間的流通性及聚合感，體會到透過此量體去呈現一種‘模糊的關係’。懸吊軟性量體靈感來自於女性脖子懸掛的軟式項鍊，希望帶來一種更空靈、更優雅的味道。女性優雅的姿態及純淨的靈魂衍伸出帶有自然紋理及有機形態的機能櫃體。利用暖色調及粗糙完成面材料，修復現況的水磨石地板以及懸吊軟性的量體幫助我們在空間之中置入一種“和諧互動”的美學。相反的，從女性首飾的意象甚至是心中那個純淨的靈魂轉化的過程之中，試圖的讓這間更獨特、更具有簡約色調的選貨商店跳脫出以往典型的商店設計。我們認為在這裡，在這個空間發生的有趣事情，敘述的只是同一個故事，反映著這間商店的精神標語“別讓這個世界，改變你的笑容”。

Communion

We are always seeking a tangible definition of what “real beauty” is? If our eyes only saw souls instead of bodies, how very different our ideals of beauty would be. This is a collaboration with an selective shop owner ; a project that started merely with a conversation. As we revisit the conversation, we were able to reignite the chemistry; we could decipher the most important components to be human appearance, mentality and sensibilities. We started to preserve the brand identity by transforming the space into a notion with aesthetic sensibilities. Aiming to accommodate the different needs of our client, we created two separate retail spaces, which are divided by a suspension object. The suspension partitions embody continuity as we incorporated arch-shaped segments to separate the display spaces from an indoor. The biggest challenge was to create two split retail spaces, with still being able to provide an open space for consumers. It was paramount to maintain connectivity and a sense of togetherness between the spaces, we wanted make this ‘a relationship without a relationship’ when the people walk through and stay below the suspension partitions. The suspension partitions display an ethereal elegance that can be aroused from Natural texture and organic shape display shelves and counters personify the dignified posture and pure soul inside a female. Applying warm tones and rough-hewn material, restoration of terrazzo floors, and soften fabric fixtures helped us insert a ‘harmoniously interaction’ aesthetic inside the space. We hoped to achieve a minimalistic yet urban tone which would directly contract with typical retail spaces in Taiwan; to do this we amplified simplicity and took inspiration from the human soul and accessories that could compliment. We believe that synergy does not have to be attained from ingredients that are all the same. As not all things are produced in the same place this brings realism into our idea. We hope to embody this through design, innovation and the creation of this retail space. The space speaks for itself, as less is more.