

TID 12th 2019 Award
Taiwan Interior Design

商業空間類/個人工作空間 TID 獎
The TID Award of Commercial Space/ Studio Space

心傳動物醫院
CHUAN Animal Hospital

覺知造所室內裝修有限公司
danielhu interiors

主持設計師
Chief Designer

胡廷璋 daniel hu

協同設計師
Co-designer

鍾雨潤 rain chung

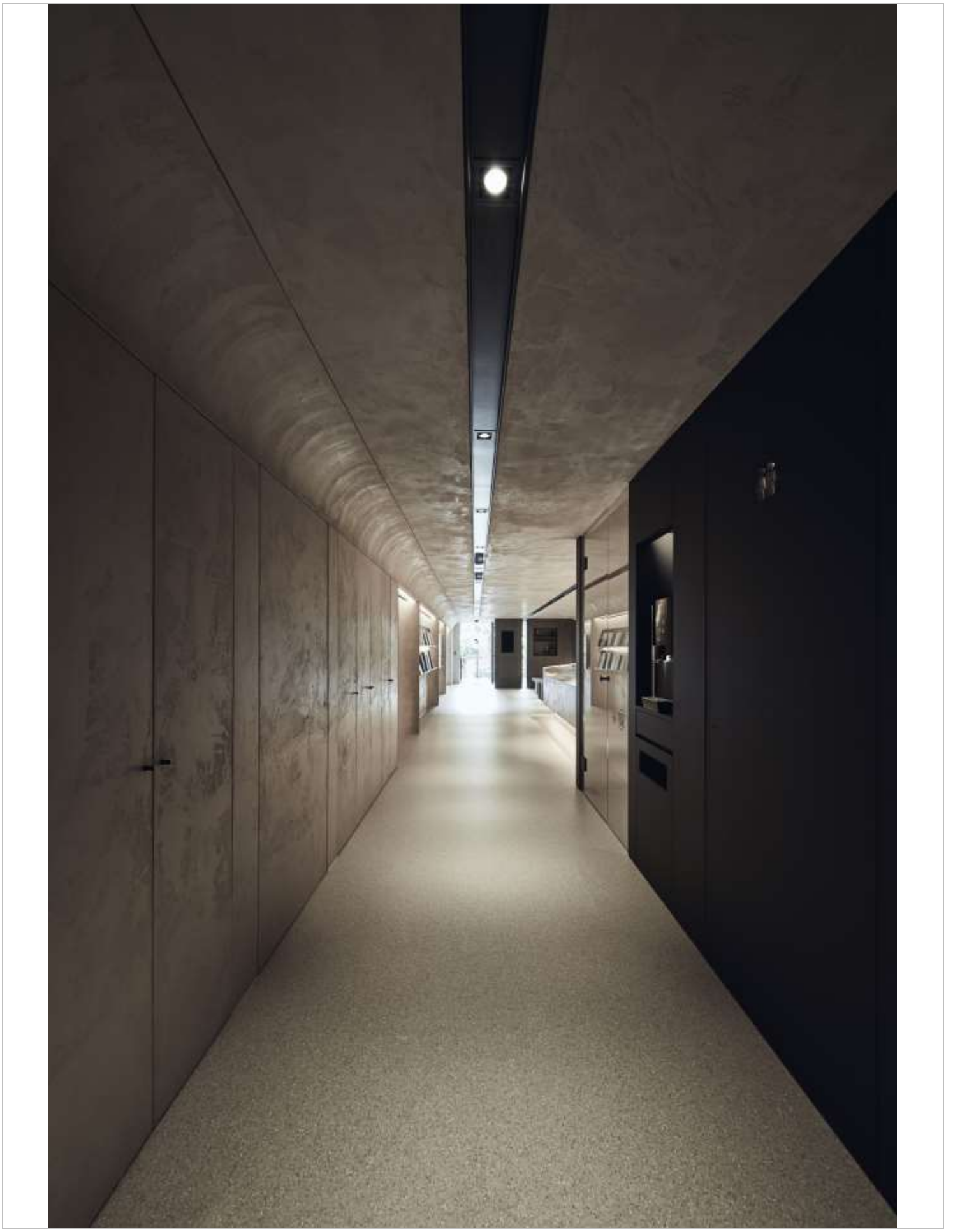
攝影者
Photographer

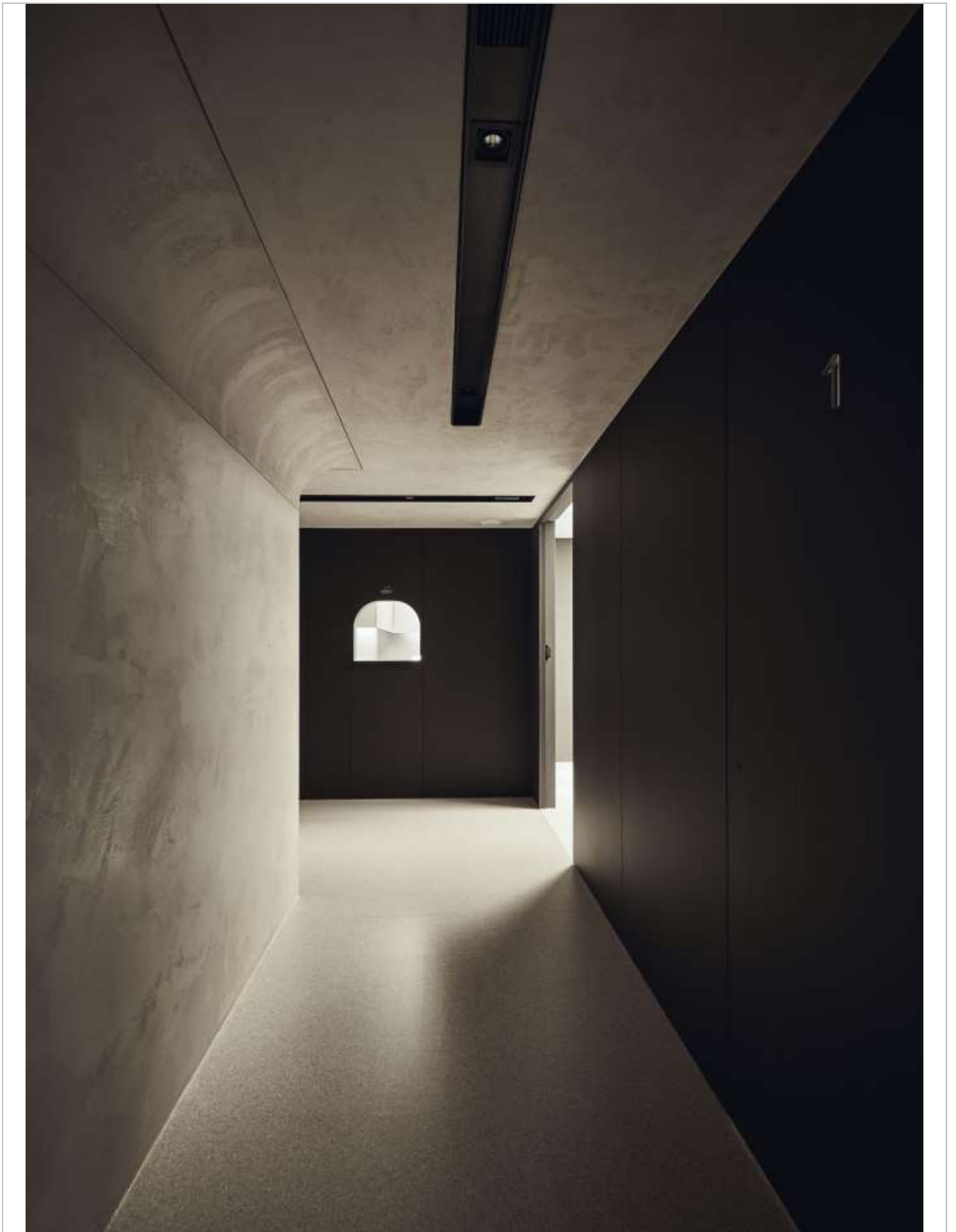
嘿!起司 HEY!CHESSE





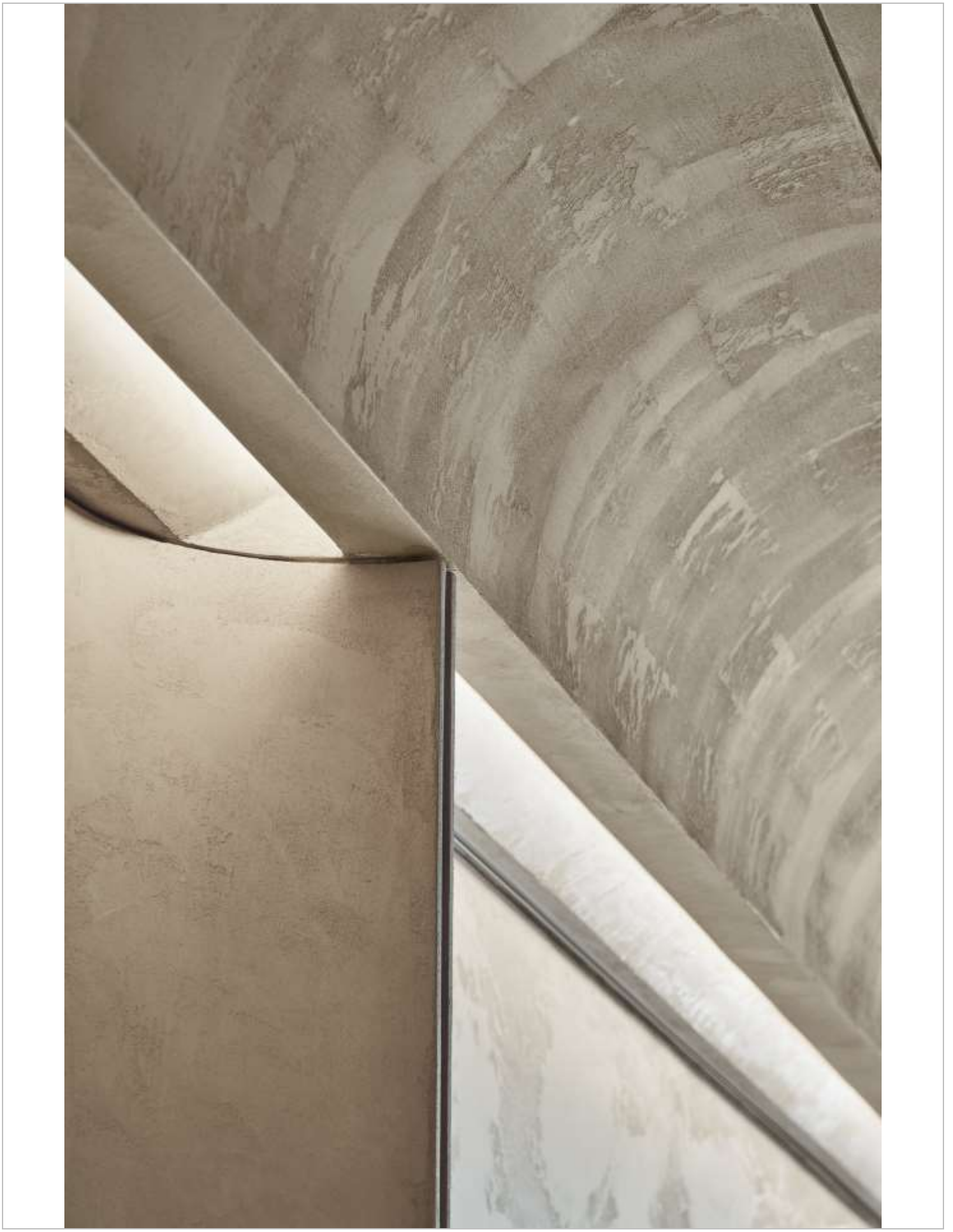


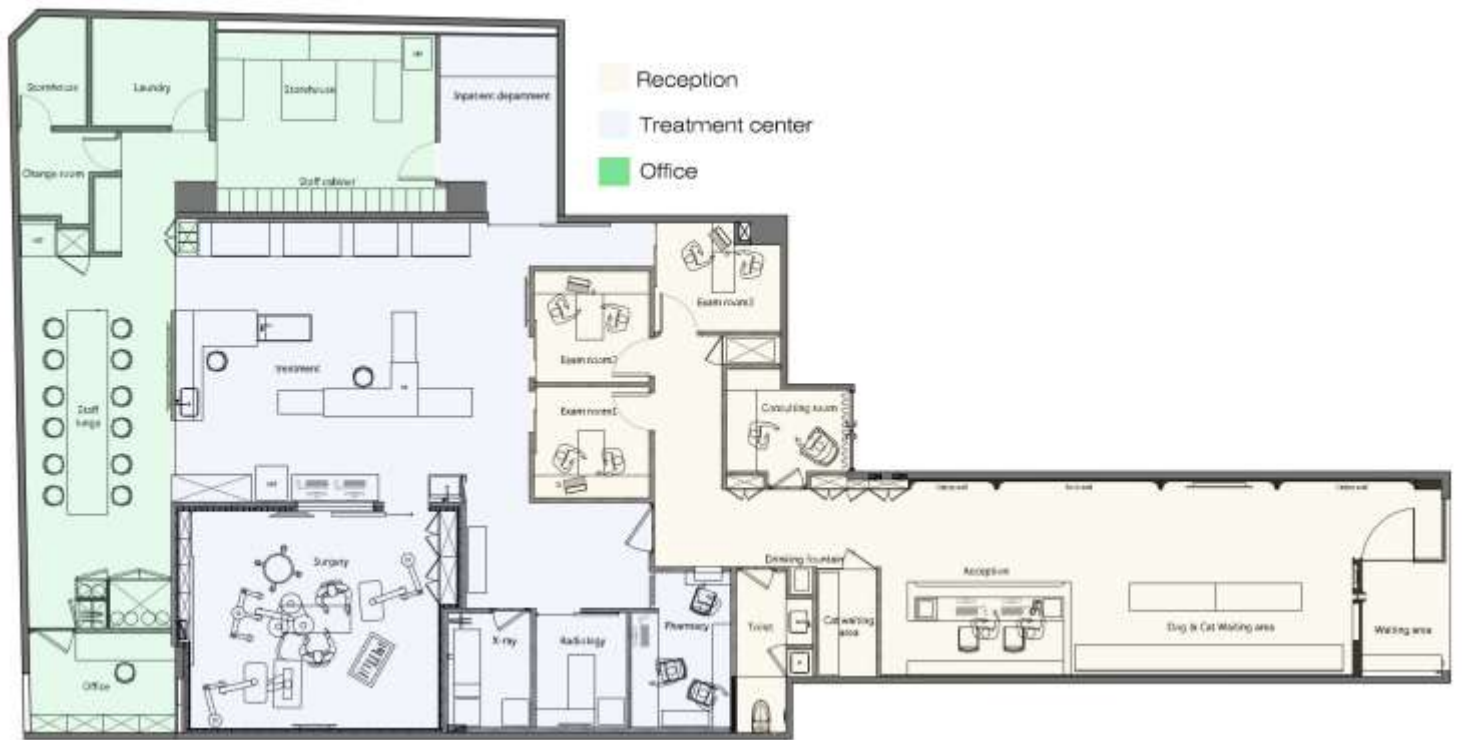












心傳動物醫院

心傳動物醫院 發想 [想要有一間靜謐室，來好好的說明生命狀況。] 都愛在甚麼地方都應該像靜室一樣，我們都該溫柔說話。當我們陪伴家人到醫院時，我們的心情是忐忑不安、擔心、害怕的。我們可能沒有優雅的心情看書報，當我們的眼睛盯著電視螢幕的時候，可能我們也沒有再看螢幕，而是在看螢幕的框框，多數時候到醫院只剩焦慮又擔心，讓飼主的心也生病了。所以可不可以說來醫院的，其實有兩個病人。一個我們需要醫治他的身體，藉由專業有經驗的醫生團隊與設備。另一個則是需要醫治他的情緒。藉由親切的對待與空間的安寧。後場則服務動物，前場服務動物的主人。空間概念元素 1.安寧的空間：回歸生物生活空間最本質的材質，就是型成地球的土壤。土壤的溫暖色澤與紋理，是烙印在生物基因裡的事物。打從人類文明發展前的石器時代到近代，人類多數時間都是生活在天然洞穴裡。所以當人或動物只要靠近土壤或大地，心靈就會感到一種本能的回歸格外感到安全與踏實，所以選擇了土壁做為空間的一個重要元素。2.神聖的光：宗教建築是最早懂得利用光來給人心靈感觸的建築物。我們希望藉由空間中的光線邊界的勾勒，與區域光源的緩沉，來帶出醫院的神聖感。3.安全感的形狀：在一萬五千年前，狗，是地球上的一個跟人類親近的生物，人類也因為馴養了狗，懂得與生物建立友誼，而開始畜牧，開創了文明。打從人類文明發展前的石器時代到近代，人類多數時間都是生活在天然洞穴裡。特別是洞穴屬天然的形狀，在直線中，人心耿直剛強，而在弧線之中，人心也變的柔軟起來了。美好分享 釋放空間成為一個友善溫暖的社區角落。分享出一面窗，一面牆，成為一個街角驛站。預備著展覽與生命中的美好分享。獸醫院不僅適應來訪醫生的行為，還應該成為一個共享環境。如畫廊，或社區集會場所。它可以讓藝術滲透到我們的城市，緩和狗有車道的等候區，以及2樣長寬的公共等候區，鼓勵寵物主人在等待時間互動。研究摘要 現場大門入口內過深且標位低，除入口外皆沒有窗戶，故使用洞穴和弧作為空間概念，用空間深度產生的視覺效果，合理化空間中的光線來源，並忽略空間高度不足的問題，使用長方向的通道牆面來分隔不同區域的互動功能，組織社區展覽或信息教學，使空間與社區居民產生互動，改變人類與動物對動物醫院的印象。

CHUAN Animal Hospital

CHUAN Animal Hospital Design was inspired by the notional form of quiet space, reverence lighting and sense of safety. From constructing a tranquil space, the notion of earth wall infused in the connection between ceiling and wall, corresponding to prehistoric Stone Age where as human or animals came in contact with the soil or the earth, the mind and soul would feel a sense of belonging instinctively. Commercial interior design of veterinarian hospital. As opposed to the conventional white or cold or warm design for clinics, specially designed ceiling, humble elevation, and floor with similar color-scheme flooring, all in coordinated materials and color-scheme manifested absolute professionalism in medical technologies, quiet spatial ambiance, in the name of pacifying the moods of the visiting pet owners and their pets. veterinarian hospital does not just accommodate the behaviors of visiting physicians, but shall also become a shared environment such as an gallery, it allows art to permeate through our city. We hope that through the wall function integration and the simplicity of a single material to make space stay timeless. consists of counter and waiting area, with cats and dogs have separate waiting areas, along with 2 rows of long benches that encourage interaction amongst pet owners during waiting time. The site beam is dense and low, the entrance is too deep and has no windows, how to rationalize the light in the space, and change the hospital's impression of people and animals, and let the hospital interact with others in the community. The use of caves and arcs as a space concept, allows the spatial depth to produce visual effects that neglect the problem of insufficient space height. Use the long-facing channel wall to separate different interactive functions for organizing community exhibitions or information teaching, so that the space interacts with the community residents. while infusing the space with the sense of tranquility, peace, reverence, and trust through materials, colors, proportions.