



商業空間類/餐飲空間 TID 獎
The TID Award of Commercial Space/ Food & Beverage Space

宋·川菜
Song Chinese Cuisine

廣州市共和都市設計有限公司
Republican Metropolis Architecture

主持設計師
Chief Designer

黃永才 Ray Wong

攝影者
Photographer

覃昭量 Jack Qin











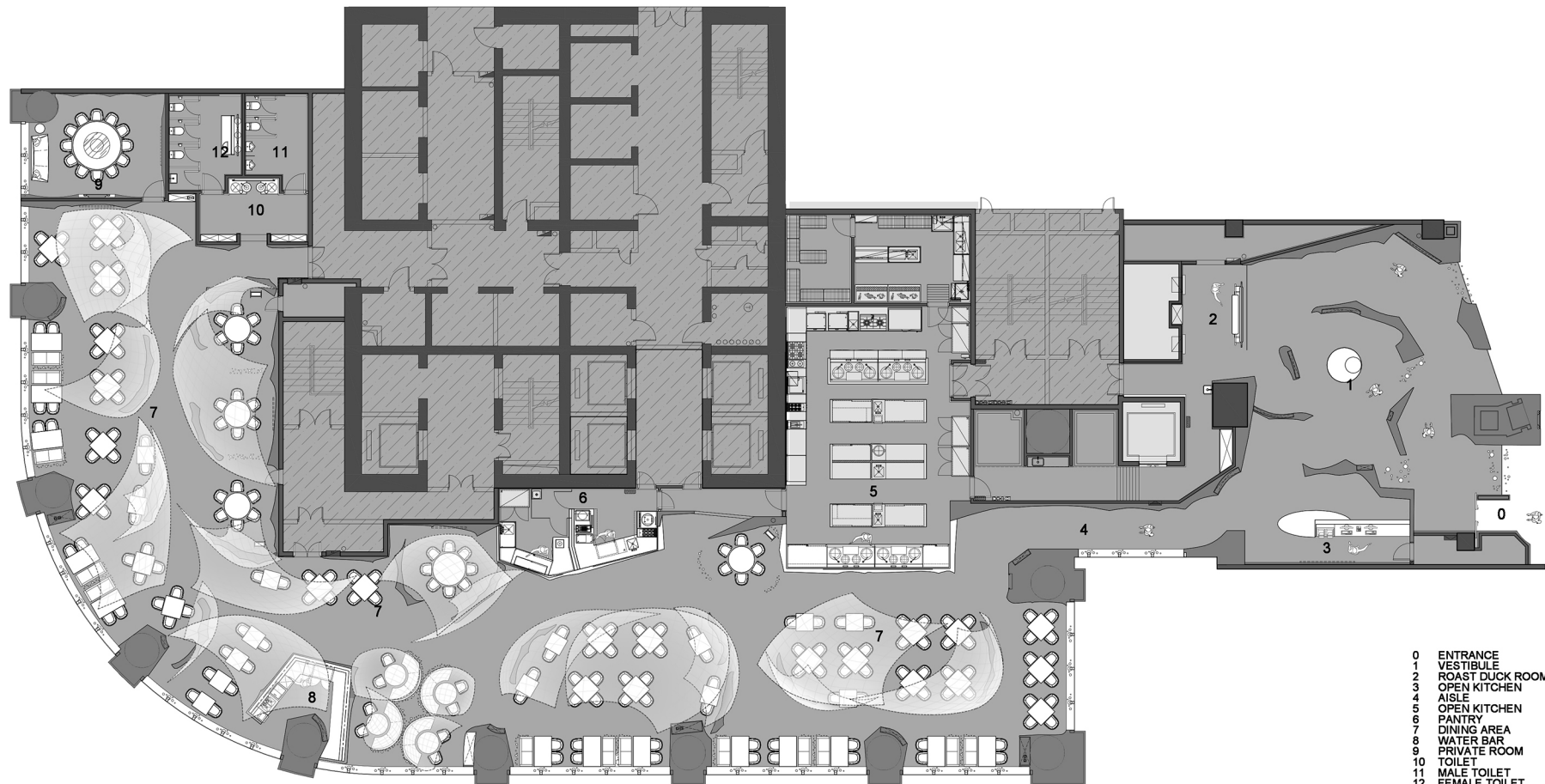




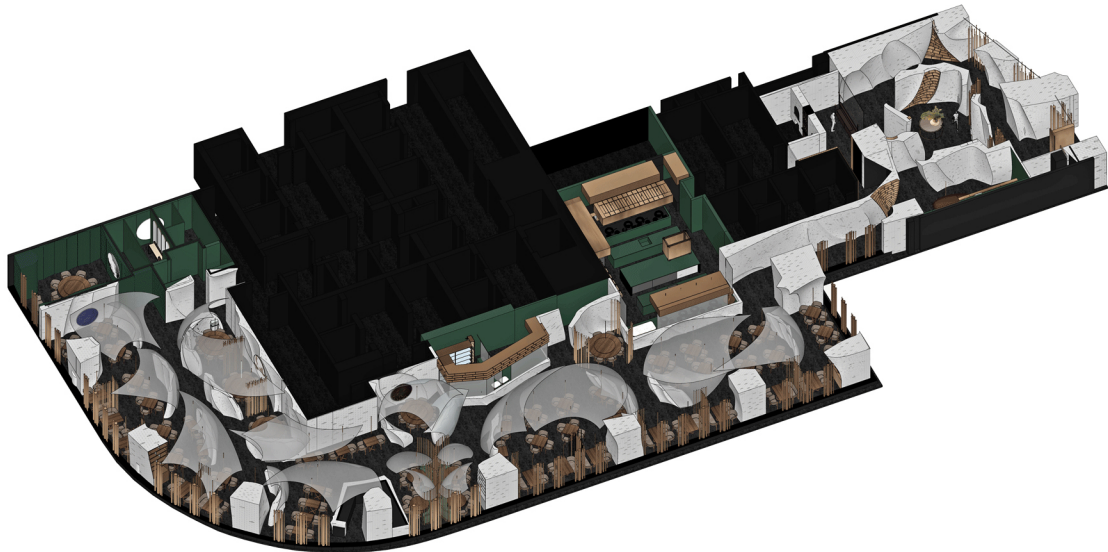








- 0 ENTRANCE
- 1 VESTIBULE
- 2 ROAST DUCK ROOM
- 3 OPEN KITCHEN
- 4 AISLE
- 5 OPEN KITCHEN
- 6 PANTRY
- 7 DINING AREA
- 8 WATER BAR
- 9 PRIVATE ROOM
- 10 TOILET
- 11 MALE TOILET
- 12 FEMALE TOILET



宋·川菜

設計師從《瑞鶴圖》中受到啟發，擷取了 “鶴羽” 這一微妙的元素，從中建立起新空間設計。

宋·川菜用現代的材料與設計手法來演繹的中式餐廳，100800 塊異性的不銹鋼磚與 399,860 塊琉璃羽毛構成宋餐廳的基本形態。曲面的形態打破了一貫的中式餐廳的想像，形成獨特的空間感受。

用餐區主要是 “鶴翼” 為題的大型琉璃羽毛藝術裝置，設計用現代的材料與設計手法來演繹，通過燈光的照射，透出華美夢幻的光澤，琉璃羽毛與細長的銅柱巧妙的分隔空間，或開敞，或圍閉。

在天花鏡面的倒影下，縱向維度上把空間擴大了一倍，讓整個空間像羽翼般的夢境一樣無界。我們希望客人能夠感受到置身在夢境之中，感覺很奇妙。

宋·川菜的呈現，用戶能夠在其中邊用餐邊感受古代文化的底蘊。

Song Chinese Cuisine

The designer was inspired by 《Ruihe Map》, taking the subtle elements of “crane feather” and establishing a new space design from it.

Song’s Chinese Cuisine uses modern materials and design techniques to interpret Chinese restaurants. 100,800 pieces of heterosexual stainless steel bricks and 399,860 pieces of colored feathers constitute the basic form of the Song’s Restaurant.The curving shape of the surface breaks the imagination of the Chinese restaurant and creates a unique spatial experience.

A large glass feather art installation with the theme of " Crane Wing" is on the dining area.The design uses modern materials and design techniques to interpret, through the illumination of the light, reveals a gorgeous dreamy luster, glazed feathers and slender copper columns subtly separate the space, either open or enclosed.

Under the reflection of the ceiling mirror, The mirror on the wall doubles the space in the horizontal dimension, which makes the space unbound like a winged dream.We hope that guests will feel that they are surrounded by dreams, very amazing.

The presentation of Song Chinese Cuisine that users can enjoy the details of ancient culture while eating in it.