



商業空間類/展售空間 TID 獎  
The TID Award of Commercial Space/ Reception Center Space

己盒  
JACI·VELA

南京觀至裝飾設計有限公司  
TO Interior Design

主持設計師  
Chief Designer

宋久治 Jiuzhi Song

協同設計師  
Co-designer

黃永貴 Yonggui Huang

楊毅 Yi Yang

王蕾 Lei Wang

攝影者  
Photographer

叢林 Lin Cong



JACI  VELA























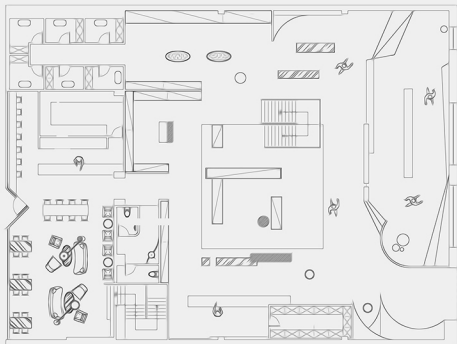




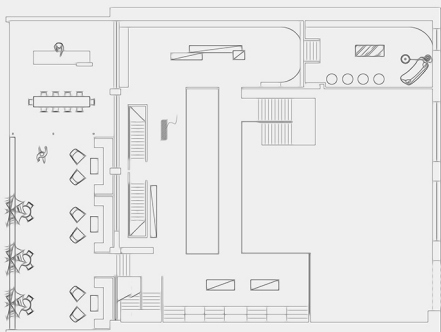




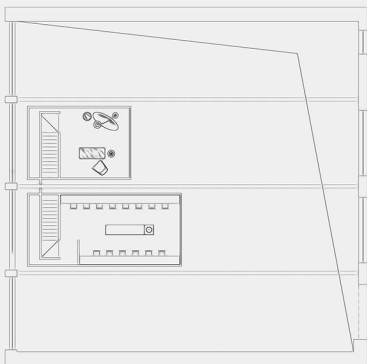




一层平面图



二层平面图



三层平面图

己盒

JACI·VELA 坐落於江蘇南通大生眾創街區，是一家集服裝、餐飲、時尚體驗于一體的複合買手店。擁有如 ANNAKIKI，PINKO，PALIIE 等多元化與高品質並存的服裝與配飾。外立面採用了白色的沖孔鋁板為主要材質，光線穿透樹葉，被篩灑下來，在隱私與滲透感之間達到一種平衡。 設計師基於對時尚，藝術的思考，探索人與空間的聯繫，因此所有的設計手法都是理性與感性的交織，思緒只是被牽動著，而不被擾亂。 在建築材料的使用上保留了部分原始建築的牆體，融入了光澤及啞光材質作為材質上的延伸，將斑駁粗糙的肌理袒露出來。頂部交錯的梁體架構，呼應牆面和空間的分割，重塑室內結構美感。體塊之間的疊加與咬合營造出具有舞臺效果和視覺藝術的體驗店，令人仿佛置身藝術展廳。 中庭的樓梯將空間劃分出不同品牌的展示區，開放的空間方便服裝、配飾展示的同時也提供了新品發佈時的走秀空間。 空間的整體色彩以灰色調為主，現代的灰度與質感使產品成為空間主角，白色的牆面恰恰為服飾的懸掛提供了最佳背景。同時，展示台是可移動的，通過增減與組合方式的不同，不僅滿足了 JACI·VELA 定期陳列改造，也使空間更具有趣味性與可寫性。 除了有趣的潮品，這裡也有享受一杯下午茶的落腳之處。

JACI·VELA

JACI·VELA is located in Dasheng Zhongchuang Street, Nantong, Jiangsu. It is a composite buyer's shop integrating clothing, catering and fashion experience. We have a wide range of high-quality clothing and accessories such as ANNAKIKI, PINKO, and PALIIE. The façade is made of white perforated aluminum plate. The light penetrates the leaves and is sieved down to achieve a balance between privacy and penetration. Based on the thinking of fashion and art, the designer explores the connection between man and space. Therefore, all the design methods are intertwined with rationality and sensibility. Thoughts are only affected and not disturbed. In the use of building materials, some of the walls of the original building were preserved, and the luster and matte materials were added as an extension of the material to expose the mottled rough texture. The staggered beam structure at the top echoes the wall and space segmentation and reshapes the aesthetics of the interior. The superposition and bite between the blocks creates an experience store with stage effects and visual art, which makes you feel like you are in an art gallery. The staircase of the atrium divides the space into display areas of different brands. The open space facilitates the display of clothing and accessories and also provides the space for the show when new products are released. The overall color of the space is dominated by gray tones. Modern grayscale and texture make the product the protagonist of the space. The white wall provides the best background for the suspension of the costume. At the same time, the display stand is mobile. By increasing or decreasing and combining, it not only satisfies JACI·VELA's regular display and transformation, but also makes the space more interesting and writable. In addition to the fun, there is also a place to enjoy a cup of afternoon tea.