



公共空間類/社區空間 TID 獎
The TID Award of Public space/ Community Space

香港將軍澳藍塘傲會所
HK TSEUNG KWAN O ALTO RESIDENCES CLUBHOUSE

壹正企劃有限公司
One Plus Partnership Limited

主持設計師
Chief Designer

羅靈傑 Ajax Law

龍慧祺 Virginia Lung

攝影者
Photographer

雷壇壇 Jonathan Leijonhufvud



- 1/F LIFT
- 2/F LIFT
- 3/F LIFT
- 4/F LIFT
- 5/F LIFT
- 6/F LIFT
- 7/F LIFT
- 8/F LIFT
- 9/F LIFT
- 10/F LIFT
- 11/F LIFT
- 12/F LIFT
- 13/F LIFT
- 14/F LIFT
- 15/F LIFT
- 16/F LIFT
- 17/F LIFT
- 18/F LIFT
- 19/F LIFT
- 20/F LIFT
- 21/F LIFT
- 22/F LIFT
- 23/F LIFT
- 24/F LIFT
- 25/F LIFT
- 26/F LIFT
- 27/F LIFT
- 28/F LIFT
- 29/F LIFT
- 30/F LIFT
- 31/F LIFT
- 32/F LIFT
- 33/F LIFT
- 34/F LIFT
- 35/F LIFT
- 36/F LIFT
- 37/F LIFT
- 38/F LIFT
- 39/F LIFT
- 40/F LIFT
- 41/F LIFT
- 42/F LIFT
- 43/F LIFT
- 44/F LIFT
- 45/F LIFT
- 46/F LIFT
- 47/F LIFT
- 48/F LIFT
- 49/F LIFT
- 50/F LIFT
- 51/F LIFT
- 52/F LIFT
- 53/F LIFT
- 54/F LIFT
- 55/F LIFT
- 56/F LIFT
- 57/F LIFT
- 58/F LIFT
- 59/F LIFT
- 60/F LIFT
- 61/F LIFT
- 62/F LIFT
- 63/F LIFT
- 64/F LIFT
- 65/F LIFT
- 66/F LIFT
- 67/F LIFT
- 68/F LIFT
- 69/F LIFT
- 70/F LIFT
- 71/F LIFT
- 72/F LIFT
- 73/F LIFT
- 74/F LIFT
- 75/F LIFT
- 76/F LIFT
- 77/F LIFT
- 78/F LIFT
- 79/F LIFT
- 80/F LIFT
- 81/F LIFT
- 82/F LIFT
- 83/F LIFT
- 84/F LIFT
- 85/F LIFT
- 86/F LIFT
- 87/F LIFT
- 88/F LIFT
- 89/F LIFT
- 90/F LIFT
- 91/F LIFT
- 92/F LIFT
- 93/F LIFT
- 94/F LIFT
- 95/F LIFT
- 96/F LIFT
- 97/F LIFT
- 98/F LIFT
- 99/F LIFT
- 100/F LIFT









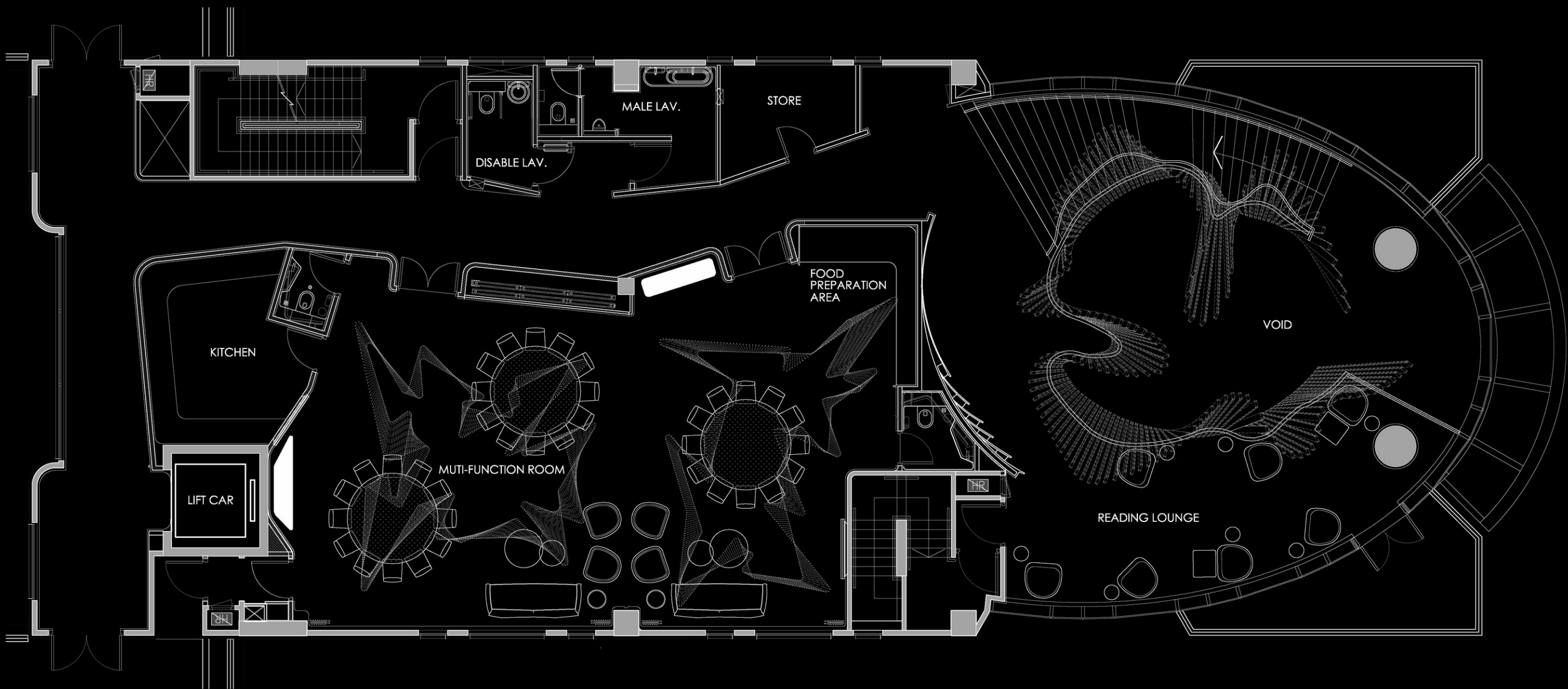


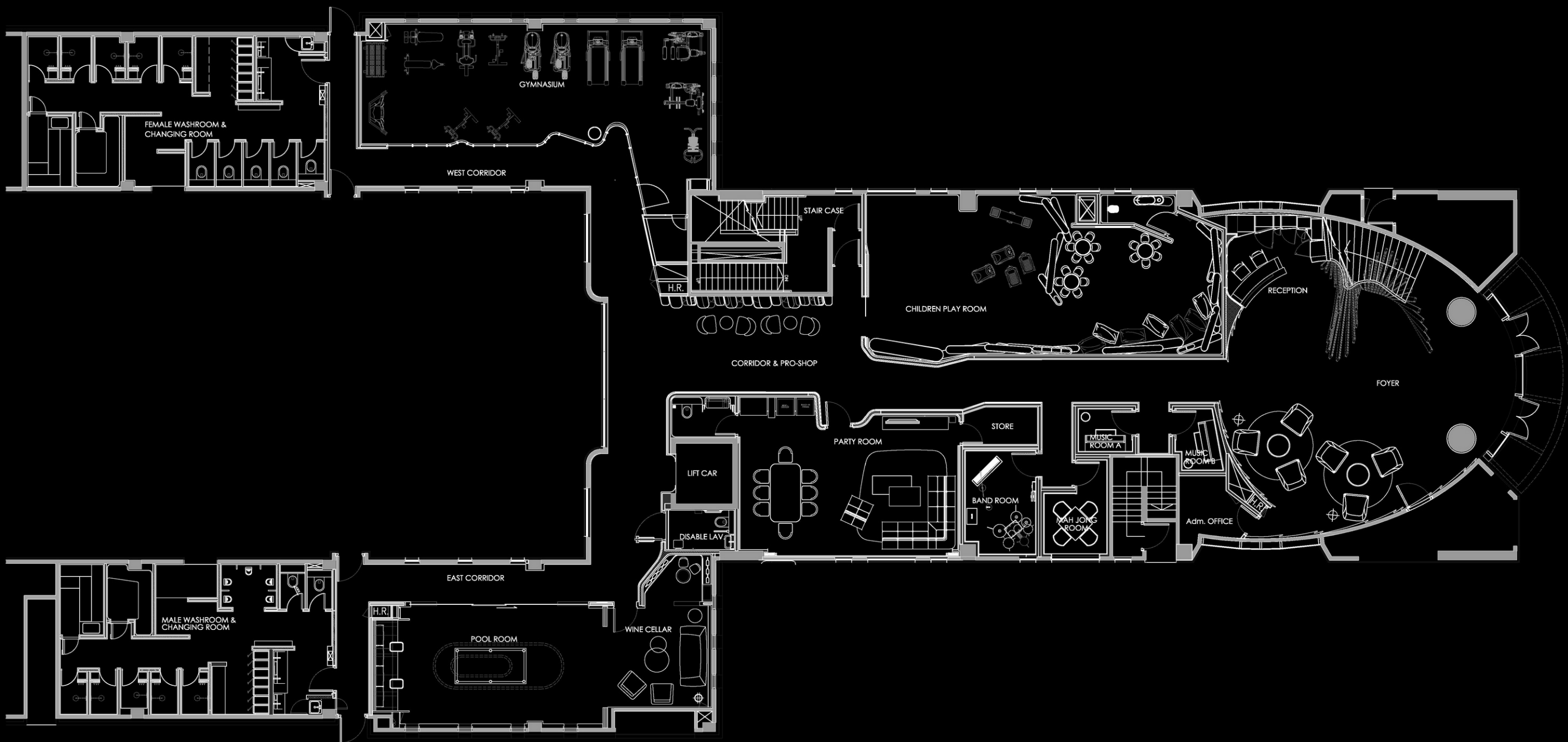












| 香港將軍澳藍塘傲會所 | HK TSEUNG KWAN O ALTO RESIDENCES CLUBHOUSE |
|---|---|
| <p>這間會所處於臨海位置，因此令設計師想到以「海洋」作為今次設計的主題。每當想到大海時，很多人馬上會聯想到藍色——設計師除了以此作為主色調之一外，還專注於如何通過各種波浪形狀和線條來傳遞出「海洋」的概念，令人聯想起起伏不一的波浪。除了藍色之外，他們還採用了暖色系物料塑造一片海洋水平如鏡時，波浪悄然起伏的寧謐溫暖感覺，表現出一片海洋水平如鏡時，波浪悄然起伏的寧謐溫暖感覺。在入口處，多支垂直的方形柱從地板伸延至天花，模仿海面平靜時的波浪形態。藍色是海洋的聯想色彩，設計師卻以暖色系取代，寧謐溫暖色調縈繞，表現出大海的舒適和安靜感覺。這些方形柱由金屬製成，並用木質覆蓋，創造了一個引人注目的「藝術裝置」，成為了會所的焦點所在。三種不同顏色的大理石更組合出地板圖案，當人們近看時，更會注意到約隱約現的波浪線條。它們隨機地混合搭配，營造出自然的氛圍。這些獨特的波浪以不同的材料與形狀穿梭於會所之中，與主題相互呼應。在多功能客廳裡，以鏡面不銹鋼製成的彎曲裝置巧妙地裝飾著天花，就像海面懸立在來賓之上。要做出這個饒有趣味的裝飾亦非易事——設計師首先要打造一個 3D 立體模型，但當中有些細節可能與現實還是有些不同之處，因此設計師需要逐個調整每個雕塑的角度和長度，以達到最出眾的效果。此外，以不同色度的藍色所製成的椅子和牆壁則令室內的設計更富層次感。在更衣室的天花板上，長方形的片狀設計以不同的長度和角度排列。他們以另類形態呈現出波浪主題，引領來賓進入波浪悄然起伏的淡雅海洋。</p> | <p>The clubhouse, which is located near the sea, inspires the designers to use ‘sea’ as the main theme of this design. When someone thinks of the sea, first thing that comes into mind must be blue. Other than using blue as one of the main colour tones, the designers also focus on how to illustrate the ‘sea’ concept through various wavy forms and lines that would remind people of the waves. They extract the steady waveforms and soothing feeling that associate with the sea. Upon the entrance, branches of vertical rods elongate from the floor to the ceiling, mimicking the waveforms of the surface of the steady sea. Without using an obvious reminder of the color of the sea, blue, the designers choose some earth tone colors, which represent the comforting and quiet feeling of the sea. These square rods are made of metal and covered in wood, creating an eye-catching ‘art installation’ that would easily draw people’s attention to it. Three various colors of marbles combine to form the floor pattern, which when one looks closer, would notice the hidden waveforms. They display in a rather smooth and circular motion, mix and match randomly to give out a natural vibe. The waveforms represent themselves via various materials and shapes throughout the clubhouse. In the multi-function room, mirror-finished stainless steel installations decorate the ceiling, like an inverted sea that’s hanging above the incomers. The shape of this feature is not an easy task at all - the designers need to create a 3D model first, but some of them might look different in reality, so the designers would need to adjust the angle and length of each sculpture one by one to achieve the best effect. In addition, the chairs and walls are composed of subtle hint of blue. On the ceiling of the changing room, long rectangular pieces of paper-like designs arrange themselves with different lengths and angles. They resonate with the theme of free waveforms which remind incomers of the peaceful warmth of the sea.</p> |