



公共空間類/歷史建築再利用 TID 獎  
The TID Award of Public space/ Historical Renovation

日露二六  
RiRo 26

衍匠設計有限公司  
GCA studies

主持設計師  
Chief Designer

王駿揚 Chun-Yang Wang

攝影者  
Photographer

邱亞菱 Yaling Chiu





**RiRo 26**

**日 露 二 六**

日光 與 自然 的寧靜對話

**Dialogue Between Light and Nature**





### 設計背景

這棟建物起源於1940年代的日本海軍官舍，是當時提供官將眷屬居住與生活的場域，有著煉瓦(磚造)的樸實牆面，以及散發沉穩香氣的木造屋樑，懷著濃厚的日式風情，然而，隨著時代變遷，建物環境因使用者的離開而荒廢不堪。

### Background

This building was built in 1940 by the Japanese navy. It is planned for soldiers and their family to live. Composed of bricks and wood, it appeals a strong Japanese style with rustic and balmy feeling. However, it turned ruinously by the impulse of time passed, lack of habitat to use and maintain.



- 1. 玄關 | foyer
- 2. 餐廳 | dining room
- 3. 客廳 | living room
- 4. 臥房 | bedroom
- 5. 書房 | study room



原始平面 | Origin Plan





### 設計策略

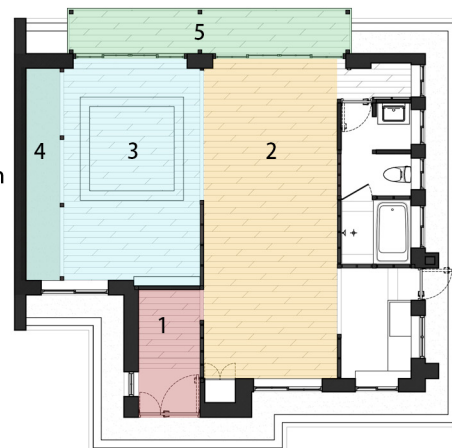
在高雄市文化局的規劃補助下，我們試著在修復空間的時候，注入一些新時代的使用思維，將舊有的使用機能改變，調整成眾人交流的場域，並轉化原本殘破的缺陷來引入光與綠，變成空間中斬新生命的活力與象徵，在賦予新氣象的同時，保留時代的痕跡，在新與舊的對比中，用一杯品茗的時間，回想這個場域的歷史記憶。

### Design Strategy

By the support of Bureau of cultural affairs Kaoshiung city government for renovation, we inject the new concept of using and change the original family living program into an area, welcome people, to discuss and exhibit. The rusty and broken parts turned into a possibility which brings lights and greens and becomes a symbol of reborn and vitality. During the reconstruction, we remained some trace of 1940's parts, in the contrast of new and old, people could remind the historical memory, by sitting and have a cup of tea.



1. 玄關 | foyer
2. 客廳 | living room
3. 多功能室 | multi-functional room
4. 植生牆 | green wall
5. 延廊 | veranda



設計平面 | Design Plan



## Inject Lustre and Greenness

By removing the interior walls, we opened the dark and closed spaces. The shattered spatial experience become one continuous traffic flow. People can gradually feel the interior space from narrow to wideness and embraced by the sunshine lighting. Through the wooden sliding door, the deepness of perspective view could be lead to the green backyard. Injecting light and verdant feeling into this area.

## 光與綠的導入

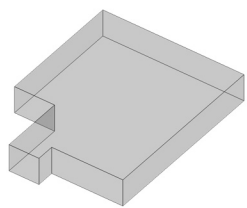
打開封閉陰暗的室內隔間，讓原本破碎的空間連貫，創造出由狹窄至寬闊的明亮體驗，穿透的木質拉門，讓室內的景深可以延伸至後院，環境的綠意可以輕易的流淌而入。



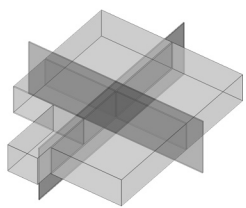




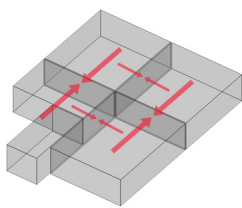
## 設計概念 | Design Concept



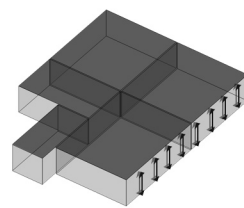
原始空間 | Origin Space



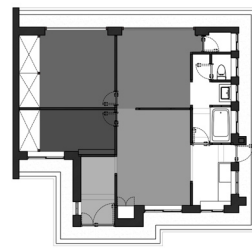
十字分割 | Cross Division



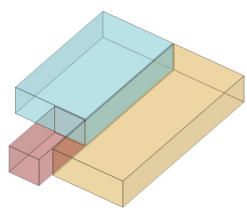
視覺阻礙 | Visual Block



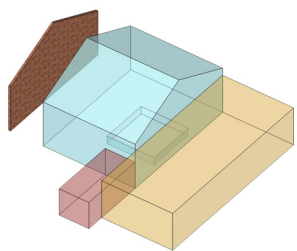
陰暗壓迫 | Dark & Depression



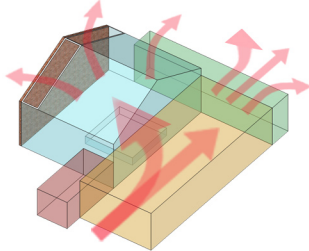
過往 | Before



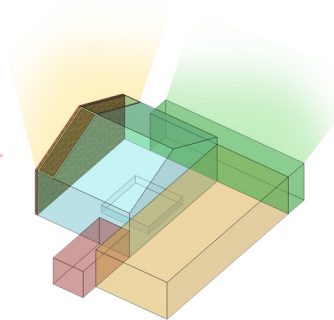
線性分割 | Linear Division



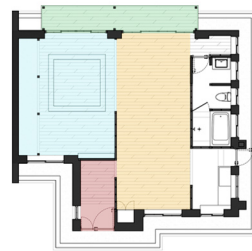
保留回憶 | Traces Remain



視覺開闊 | Visual Open



明亮綠意 | Lustre & Greenness

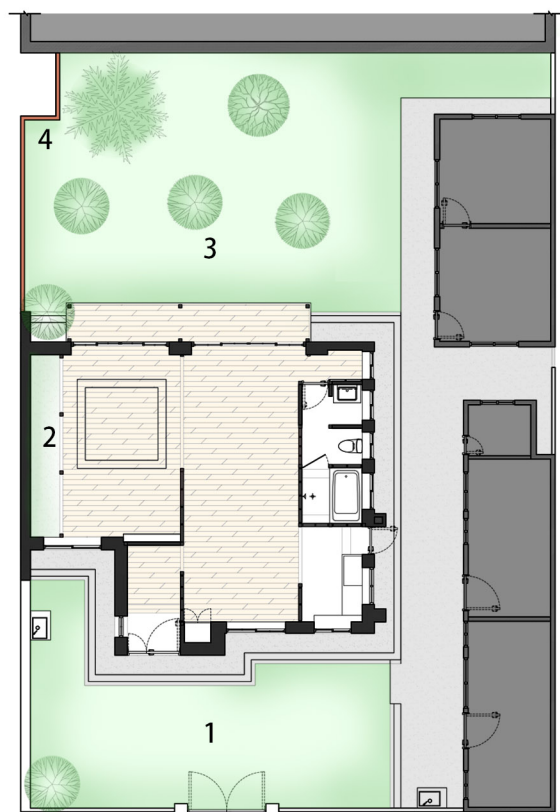


今日 | Nowadays





內外呼應的綠意 | Inner and outside, greenness concurred



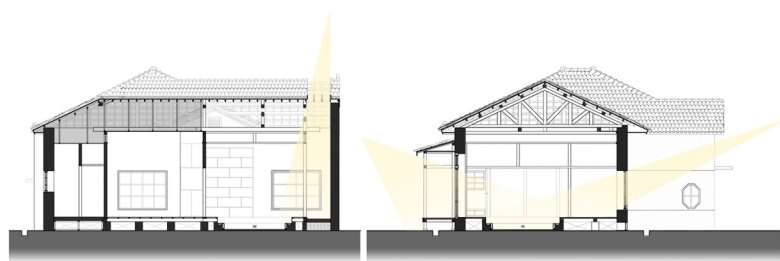
全區平面 | Site Plan

1. 建築前院 | front yard
2. 室內植生牆 | interior green wall
3. 建築後院 | back yard
4. 室外植生牆 | exterior green wall





多面向光盒子 | Multidimensional Light Box



採光天窗 | skylight

採光側窗 | sidewindows



既有植栽 | existing tree

新栽爬藤 | new vines





多功能室 | multi-functional room





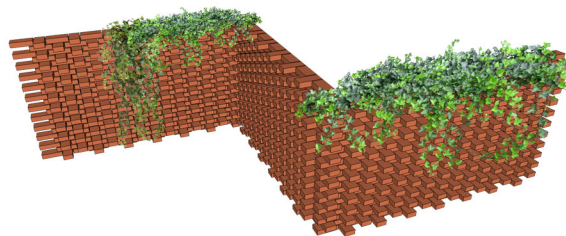
新生命與舊記憶的對話  
Dialogue between new life and old memory



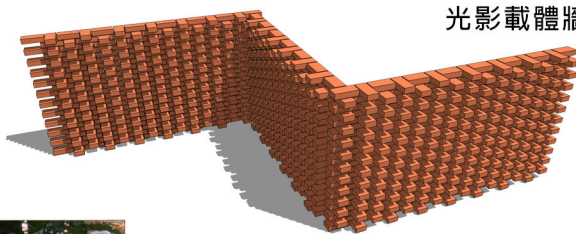


光與影的綠意邊界 | Green boundary of shadow and light

爬藤植生綠牆 | Ivy green wall



凹凸富孔細的磚牆  
提供爬藤植物攀附  
與成長的環境

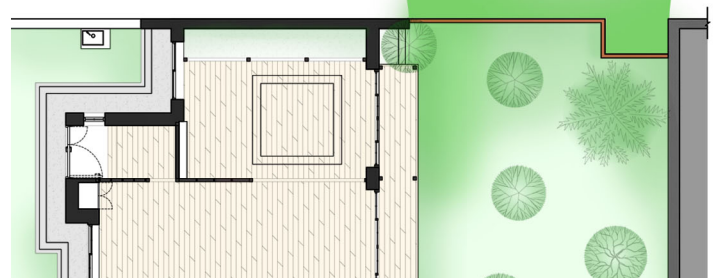


光影載體牆 | light and shadow carrier

磚牆的進退面,在日  
間的不同時段產生豐  
富表情的光影變化,添  
增邊界的景深



空間邊界的設立  
視覺綠意的連結







日光與綠意的寧靜對話 | Dialogue between light and nature







**RiRo 26**  
日露二六



日露二六	RiRo 26
<p>這棟建物起源於 1940 年代的日本海軍官舍，是當時提供官將眷屬居住與生活的場域，有著煉瓦(磚造)的樸實牆面，以及散發沉穩香氣的木造屋樑，懷著濃厚的日式風情，然而，隨著時代變遷，這裡因使用者的離開而荒廢不堪。在高雄市文化局的規劃補助下，我們試著在修復空間的時候，注入一些新時代的使用思維，將舊有的使用機能改變，調整成眾人交流的場域，並轉化原本殘破的缺陷來引入光與綠，變成空間中嶄新生命的活力與象徵，在賦予新氣象的同時，保留時代的痕跡，在新與舊的對比中，用一杯品茗的時間，回想這個場域的歷史記憶。</p>	<p>This building was built in 1940 by the Japanese navy. It is planned for soldiers and their family to live. Composed of bricks and wood, it appeals a strong Japanese style with rustic and balmy feeling. However, it turned ruinously by the impulse of time passed, lack of habitat to use and maintain. By the support of Bureau of cultural affairs Kaoshiung city government for renovation, we inject the new concept of using and change the original family living program into an area, welcome people, to discuss and exhibit. The rusty and broken parts turned into a possibility which brings lights and greens and becomes a symbol of reborn and vitality. During the reconstruction, we remained some trace of 1940's parts, in the contrast of new and old, people could remind the historical memory, by sitting and have a cup of tea.</p>