

**TID** 12<sup>th</sup> 2019 Award  
Taiwan Interior Design

居住空間類/單層 TID 獎  
The TID Award of of Residential Space / Single Level

不設限的喜悅  
Unlimited joy

禾築國際設計有限公司  
Herzu Design

主持設計師  
Chief Designer

譚淑靜 Tan shu-ching

協同設計師  
Co-designer

曾翔聲 Tzeng shiang-sheng

鄭宏旭 Cheng hung-hsu

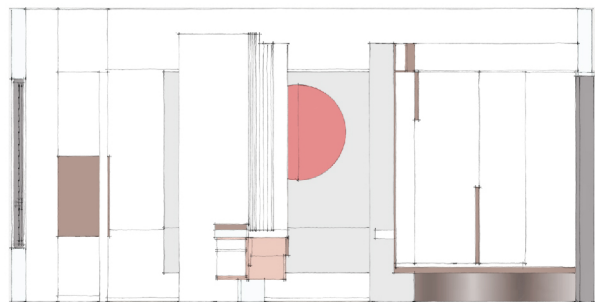
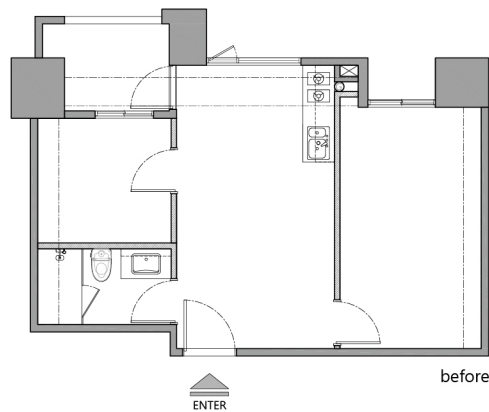
攝影者  
Photographer

吳啟民 (墨田工作室) Wu chi-min (Moooten studio)

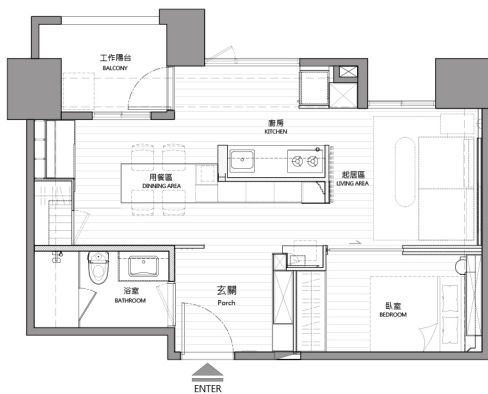


## 不設限的喜悅 Unlimited joy

「人生中最珍貴的，就是與相知相惜的人一起，  
並了解自己所渴求的人生目標，共同實踐、踏實。」







### 打破原有兩房格局，以不設限的格局規劃

此案為微型居所，我們打破空間既定意象，將大尺度格局引入微形空間並貼切結合居住者的使用需求，每處空間不因基地坪數而縮小減少，而藉著空間特性與設計形式整合。回歸不設限流暢的空間本質與寧靜的美感，不被外在所定義，回歸原本的自己。

進屋感受的是寬敞的玄關，延續玄關穿鞋台與鞋櫃立面側結構，續而延伸至梳妝檯。





長型的石材平台在中島上，可滿足日常生活或親友聚餐等不同情境。



玄關入口窄面隔屏，在格局上拉長中島餐桌背牆給予安定感。  
並整合壓克力光點的輔助照明，同時兼具顧具掛衣勾功能於一身。











視聽起居區與睡眠區採用大拉門  
增加空間的開展度也保有臥床的隱私性。





床頭轉角利用光作為轉折與延伸。床側漆選用褐黃色調，溫暖氛圍。

## 不設限的喜悅

不設限的喜悅 面積 15 坪/ 50 平方公尺 家庭成員 夫妻 空間規劃 玄關、客廳、餐廳、廚房、浴室、儲藏室、臥室 主要材質 超耐磨木地板、塗裝木皮板、烤漆金屬、義大利進口大理石、茶色強化安全玻璃、調色烤漆玻璃、進口五金、環保無毒漆料 規劃背景 此案是一對中年夫妻的居所，在孩子都獨立後，他們選擇較小的空間生活。享受化繁為簡的生活方式，更珍惜享受兩人生活的喜悅。 設計理念 「人生中最珍貴的，就是與相知相惜的人一起，並了解自己所渴求的人生目標，共同實踐、踏實。」 這是我們與屋主在洽談中，實刻體悟到的感受。人的想法、感受會隨著時間推移而趨於熟成，並非照本宣科制式化的一以貫之，居住者本身如此，空間，不該也是？此案為微型居所，我們打破空間既定意象，將大尺度格局引入微形空間並貼切結合居住者的使用需求，每處空間不因基地坪數而縮小減少，而藉著空間特性與設計形式整合。寬敞的玄關、長形的中島、開展的臥室都展現了空間多種可能。空間表現上以簡潔大塊面的處理，取而代之以機能、空間結構輪廓輔以色塊線條交錯，回歸不設限流暢的空間本質與寧靜的美感，不被外在所定義，回歸原本的自己。 空間規劃 打破原有兩房格局，與不設限的格局想法來進行規劃。 進屋感受的是寬敞的玄關，延續玄關穿鞋台與鞋櫃立面側結構，續而延伸至梳妝檯，收納機能整合其中，外觀交疊鑲嵌、層次有緻。玄關入口途經窄面隔屏，在格局上為要拉長中島餐桌背牆給予用餐區域的安定感。並整合壓克力光點的輔助照明，同時兼顧具掛衣勾功能於一身。 整體空間以島型的環狀動線圍繞整室，中島隔局架構整合了收納、視聽起居、閱讀休憩、廚具、用餐、展示等多重機能。長型的石材平台在中島上，可滿足日常生活或親友聚餐等不同情境，義大利石材的色澤紋理在素淨的空間可凝聚視覺效果，懸空檯面使座椅擺放形式靈活不受限制，壁面則以光做為視覺素材，以牆為底藉光作畫，也隨著日出日落自然光入室與之互相對話。 在中島的背面是採光良好的廚具區，運用環形動線給予順暢寬敞的餐廚空間、機能上電器櫃、茶水櫃等一應俱全，無論在空間視覺，動線機能都不著痕跡的緊扣結合，恰如其分。 視聽起居區與睡臥區採用大拉門，增加空間的開展度也保有臥床的隱私性。床頭轉角同樣利用光作為轉折與延伸，不至密閉。床側漆選用褐黃色調，溫暖了臥區的寧靜氛圍。

## Unlimited joy

Size 15 pings / 50 square meters Family members Husband and wife Space planning Porch, living room, dining room, kitchen, bathroom, storage room, bedroom Main material Super wear-resistant wood flooring, coated wood veneer, baking paint metal, Italian imported marble, brown reinforced safety glass, color-matching baking paint glass, imported hardware, environmentally friendly non-toxic paint Planning background The case is the residence of a middle-aged couple. Now that the children are independent, they have chosen a smaller space in which to live, enjoy a simple life, and cherish the joy of living together. Design concept "The most precious thing in life is to be with people who know each other, and understand the goals of life that you are craving, and practice together in a down-to-earth manner." This is what we and the landlord realistically realized in the negotiation. People's ideas and feelings will mature with the passage of time. It is not a consistent pattern of publicity and standardization. So is the resident himself. Shouldn't space be the same? This case is a mini-residence. We break the established image of space, introduce the large-scale pattern into the mini-space and integrate it with the needs of the residents. Each space is not reduced by the base size, but integrated by the spatial characteristics and design forms. Spacious porches, a long central island table and open bedrooms all show a variety of spatial possibilities. Simple element exhibited in the space. Function, structure match well with colour blocks and vertical, parallel lines to make the space natural, elegant and show a quiet aesthetic. Respond to the design idea, we hope the residents live in here can feel peace and cozy. Space planning Break the original two-room pattern, and plan with the idea of unlimited pattern. Upon entering the room you can feel the spacious porch, the extension of the vertical structure of the shoe wearing platform and shoe cabinet, as well as the dressing table, which integrates the storage function with overlapping appearance and concise layers. The entrance of the porch passes through a narrow partition screen, giving a sense of stability to the dining area through lengthening the back wall of the central island dining table. It also integrates the auxiliary lighting of acrylic light spot, and takes into account the function of hanging clothes hook. The whole space revolves around the entire room with an island-shaped circular moving line. The structure of central island partition integrates multiple functions such as storage, audio-visual living, reading and rest, kitchen utensils, dining, and display. The long stone platform of the central island table can satisfy different situations such as daily life or dinner with relatives and friends. The color and texture of Italian stone can condense the visual effect in the neat space. The suspended table surface makes the seat placement form flexible and unrestricted. We use the reflected glow from the light to create an artistic effect on the wall. On the back of the central island table is a well-lit kitchenware area. The use of circular moving lines gives smooth and spacious kitchen space, fully equipped with functional electrical cabinets and tea cabinets. Visual space and the moving line are closely integrated without any trace. We use large sliding doors for the audiovisual living area and sleeping area to expand space while maintaining the privacy of the bed. Likewise, lighting at the bed corner is used to eliminate enclosure through bending and extension while yellowish brown bedside paint warms up the quiet atmosphere of the bedroom.