



居住空間類/單層 TID 獎  
The TID Award of of Residential Space / Single Level

之 · 間  
In Between

近境制作設計有限公司  
Design Apartment

主持設計師  
Chief Designer

唐忠漢 Chung-han, Tang

協同設計師  
Co-designer

劉芸娜 Yun-Na, Liu

攝影者  
Photographer

鍾崴至 CHUNG, Wei-chih

# 之 間

In Between

層次 | 離合 | 包覆 | 開口

空間

藉由牆體的錯置

天花的層疊包覆

透過層次、離合、包覆、開口

將空間轉化成可被閱讀的感受

以旅行的步調到達、遊走

闡述心中的未境之地

以白色為主體

呈現夢境與現實間的脫離

時間的皺折

空間的縫隙

時空之間

設計之間

情感之間

妳我之間

在之間找尋純粹的詩意

在之間找尋一個安定的居所

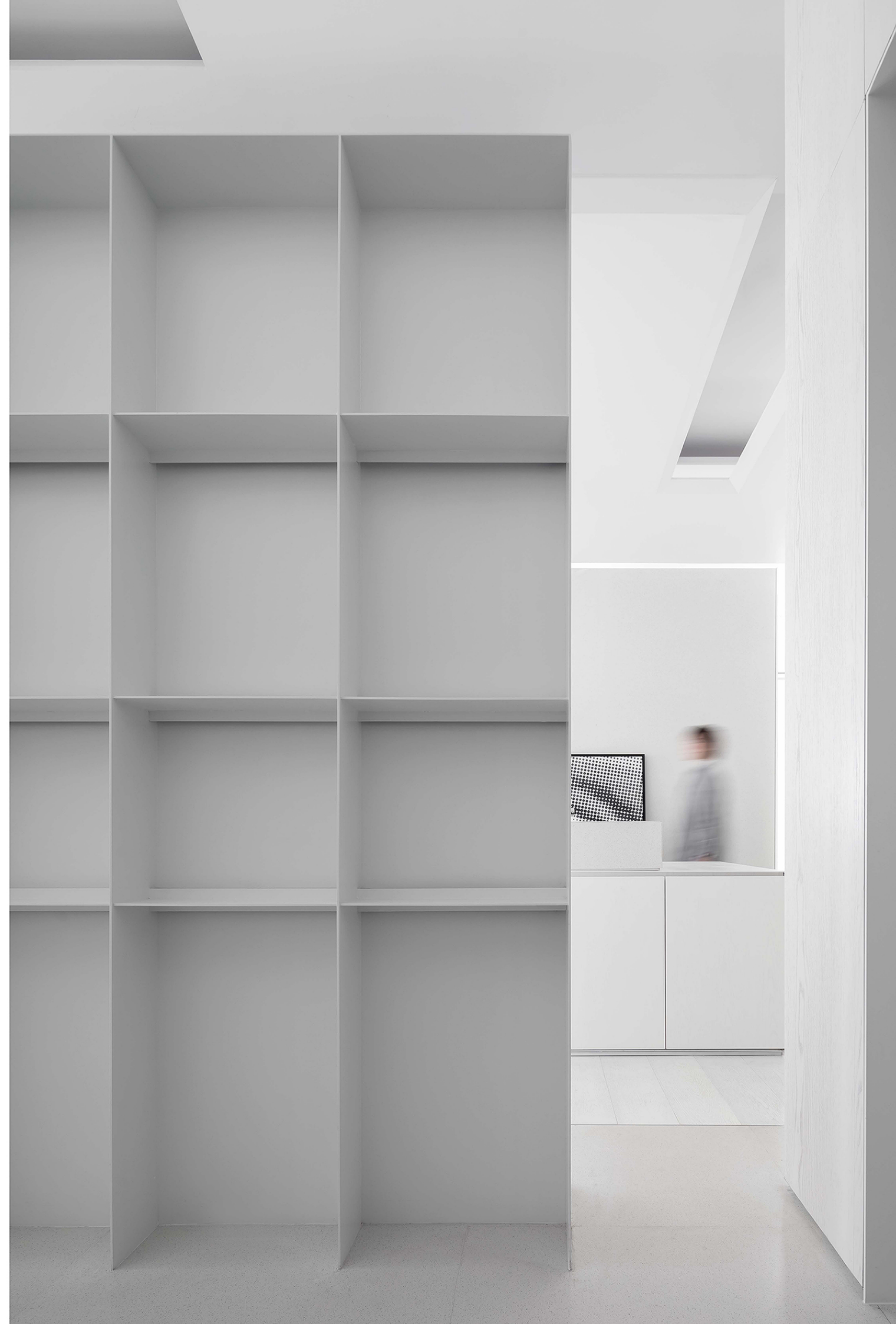
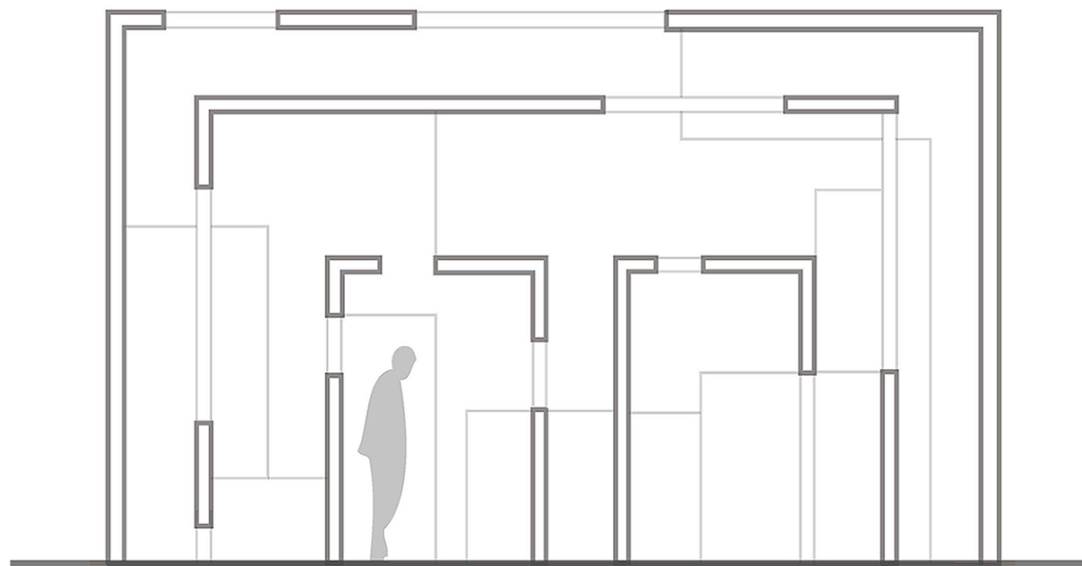
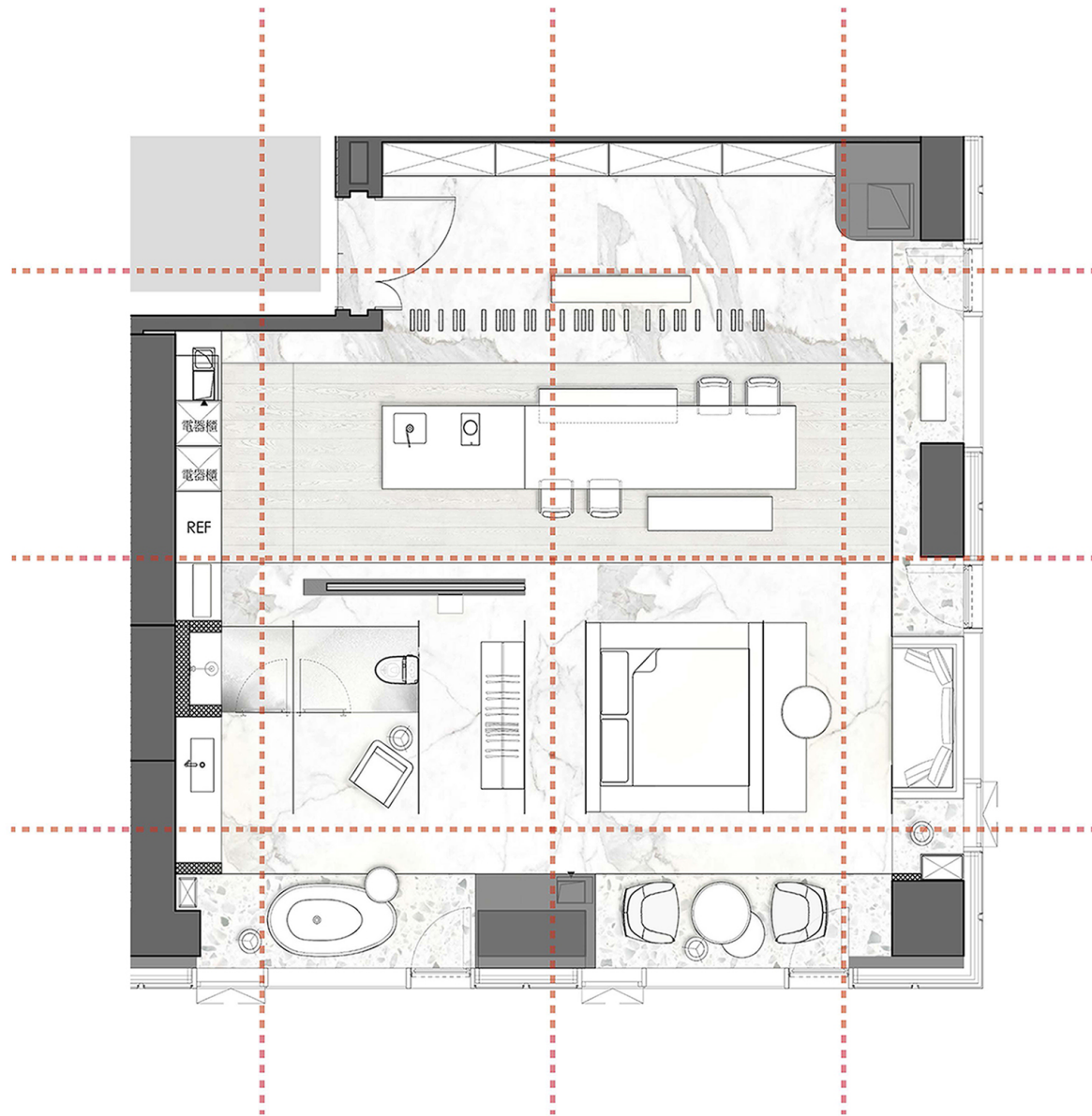
In Between



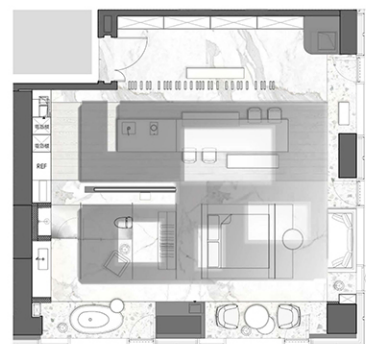












轉化

肌理

記憶

脫離

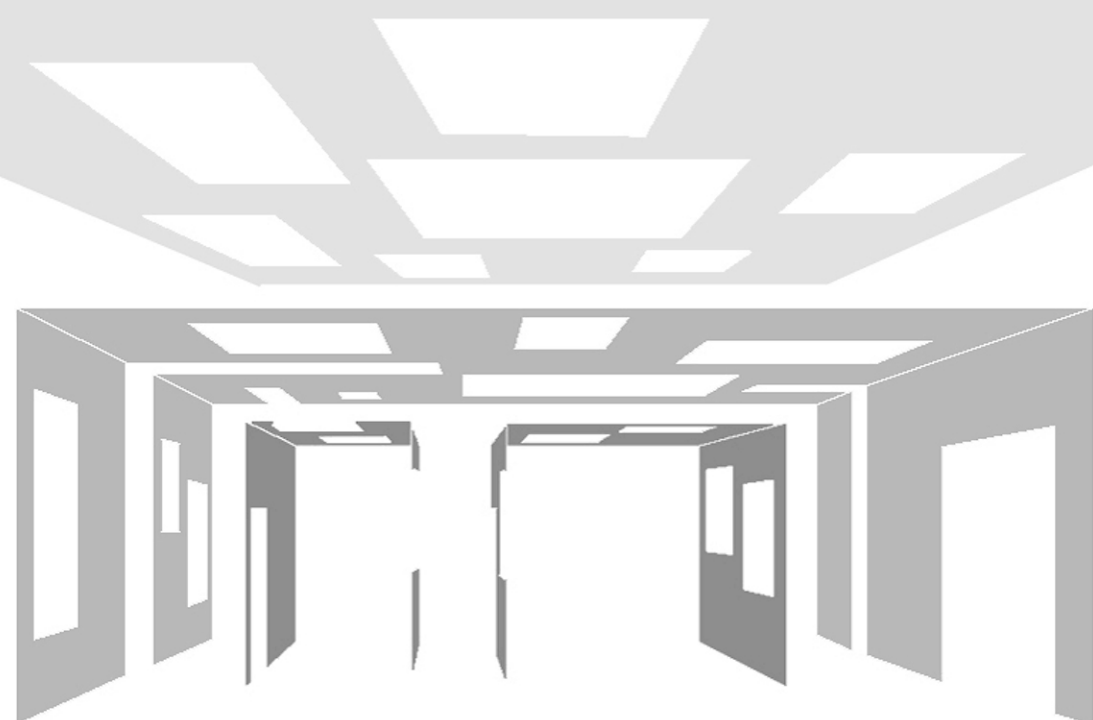
包覆

離合

經歷

設計概念

層次





































<p>之 · 間</p>	<p>In Between</p>
<p>藉由牆體的錯置 天花的層疊包覆 透過層次、包覆、脫離、穿透 將空間轉化成可被閱讀的感受 以旅行的步調到達、遊走 闡述心中的未境之地 以白色為主體 呈現夢境與現實間的脫離 時間的皺折 空間的縫隙</p>	<p>Between time and space Between designs Between emotions Between you and me</p> <p>Looking for pure poetry in it Looking for a stable place to live in</p> <p>Design Concept-Level. Separation and union. Covering. Opening. Pure white</p>
<p>時空之間 設計之間 情感之間 妳我之間</p> <p>在之間找尋純粹的詩意 在之間找尋一個安定的居所</p> <p>設計概念 - 層次 · 離合 · 包覆 · 開口 · 純白</p>	<p>Level The concept of architectural cortex is introduced into space to shape the space in the space and create the spatial level. The three white boxes are stacked, the large openings scattered on the wall face are used to welcome the light from the surrounding and zenith, allowing the spaces to penetrate each other, breaking the boundaries between the spaces, and making the whole space “inside as outside, outside as inside”. Using the concept of “box in box”, four shells of different sizes are nested with each other to increase the level of space. A natural corridor is formed between the middle box and the inner box, with the small one is the corridor and the large one is the space. There is no closed wall in the whole space, and there is no completely isolated boundary except for the transformation of room levels. Back to the first floor outside the the wall, looking through the opening, the repeated dialectic between the levels of space is even more amazing. Separation and union Space in space, separation and union in space, creating unity of separation and consistency, is not only a room, but also a collection of rooms. The sense of space between indoor rooms changes with each move. Among them, through the change of viewpoint, it can be found that every corner of the space looks very close but actually far away, seems open but narrow, seems separated but yet connected, thus the individual residential areas have subtle relationships. Through the shaping of the sense of distance, the interior space of the house changes infinitely. Covering The spacial performance of the covering gives residents a sense of security in the covered space and gives people a feeling of stability and warmth. It seems to be safe and protected by space, and to start one’s own living life. The pure white facade has many large windows, and the whole space is covered by four shells with gradually changing sizes. The outermost layer is surrounded by a porch and walkway, the second layer is a enclosed dining area, and the third and fourth layers are bedrooms and bathrooms, which are covered by layers but keep openings. Life is built in this whole space of gradient layer, and the specific realm in the existing space is replaced by gradient layer changes in the field. The heavily covered spatial structure of inside always has a relative relationship between the inside and the outside. Inside there is still the inside, while outside there is still the outside. This room type attempts to create a living experience that has nothing to do with space and form. Opening and setting scenery The overlapping openings and the dragging and separating of the square hypotenuse openings on the wall form a rich space level and light and shadow, making the whole pure white building like a large sculpture. Each layer of box shows a different opening. The massing is nested with four shells of different sizes, folds of time, gaps in space, and different openings of each layer of boxes, resulting in the effect that sunlight, air, and moving wires continuously penetrate and flow. The location of the opening takes into account not only the aesthetic feeling and the flow of light, but also the safety and privacy of residents. We misplaced the opening of each layer of boxes, so when we walked in it, we seemed to be able to see it but not see it all. Pure white The symbol of an unending land is like a place of the soul and a dream. Let a person be like being in an ideal country of joy and happiness in his mind. There is no traditional definition of walls and furniture, mostly pure white, clear, thin and transparent. Just like the blank space on the canvas, inside, the canvas with three-dimensional space, has the most liberal space for light, shadow and green. It also enables people living in it to have a deeper understanding of the existence of the natural environment. The space presented builds a bridge between urban environment and personal life. Space between man and nature should not be separated but linked.</p>
<p>層次 以建築皮層概念置入空間，形塑空間中的空間，產生空間層次。三個白盒子層層套疊在一起，利用牆面散置的大開口迎入四周與天頂的光線，讓空間之間互相滲透，打破空間之間的界線，使整個空間「在內如外，在外如內」。利用「盒中盒」概念，以四個不同大小的殼互相嵌套，來增加空間層次，中盒與內盒之間，形成自然的過道，小者為穿廊，大者為空間。 整個空間沒有任何一道封閉的牆，除了房間層次的轉換外，沒有完全隔絕的邊界。退到第一層牆外從開口看進去，空間之間層次的的反覆辯證更令人稱奇。 離合 空間之中的空間，空間之中的離合，創造分離與一致性的統一，既是一個房間，也是一系列房間的集合。 室內房間之間的空間感，在每一次走動時都有了變化。在其中，經由視點的改變，可以發現空間的每個角落看起來很近但是其實很遠，似乎開放卻又狹窄，看似分離但是卻又相連在一起，個別的居住領域因而帶有微妙的關係性。藉由距離感的塑造而使得住宅內部空間產生無限的變化。 包覆 包覆的空間表現，讓居住者有包覆空間的安全感，帶給人安定溫暖的感受。像是安全的被空間保護著，開始自己的居住生活。純白的立面開了许多大窗洞，整體空間被四個尺寸漸次變化的殼包覆其中。最外層所包圍住的是玄關和走道，第二層所圍塑出來的則是餐廳，第三層與第四層則是臥房和浴室，層層包覆但保留開口。 生活就建立在這整個漸層的空間當中，透過領域上的漸層變化來取代原本既有空間中的特定境界。重重包覆的空間結構裡，內部與外部永遠呈現相對性的關係，內部之中還有內部，而外部之外仍有外部，這個房型企圖創造一棟無關於空間與形式的居住體驗。 開口與置景 以開口交疊，牆面方形斜邊開口之間的拖開、分離，型成豐富的空間層次與光影，使整棟純白建築宛若一座大型雕塑。 每一層盒子表現不同的開口。量體以四個不同大小的殼互相嵌套，時間的皺折、空間中的縫隙，每一層盒子不同的開口表現，造成陽光、空氣和動線不斷穿透流動的效果。 開口的位置除了考慮美感與光線的流動外，也兼顧居住者的安全與隱私。我們把每一層盒子的開口錯位，因此走在其中時，好像看得到又不至於一覽無遺。 純白 象徵未境之地，猶如靈魂的場所與夢境。讓人猶如在身處於心目中追求的快樂、幸福的理想國度。沒有傳統定義的牆面、家具，多為純白的清、薄、透的面積感。就如同畫布上的留白空間，讓光影與綠意恣意在三度空間的畫布裡，有最自由的揮灑空間；也讓居住在其中的人們，更深刻的體會到自然環境的存在感。所呈現的空間搭起城市環境與個人生活的橋樑。空間在人與自然間，不應是分隔，而是連結。</p>	