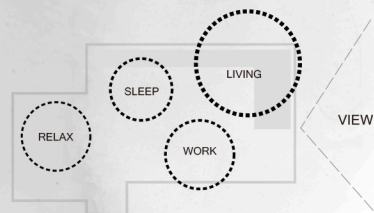


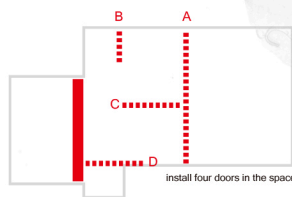
BORDER OF DOOR AND WALL

## 門牆之界

概念上我們先拆解原始的格局框架  
把原有隔間全部打破  
讓收納空間集中在四邊  
中間就形成一個自由平面  
再用很多道拉門建構空間  
我們希望藉由自由平面的想法  
透過空間的曖昧創造出不同使用彈性  
讓居住在裡面的人藉由生活重新定義空間



透過空間的曖昧創造出不同使用彈性



空間中置入了四種拉門



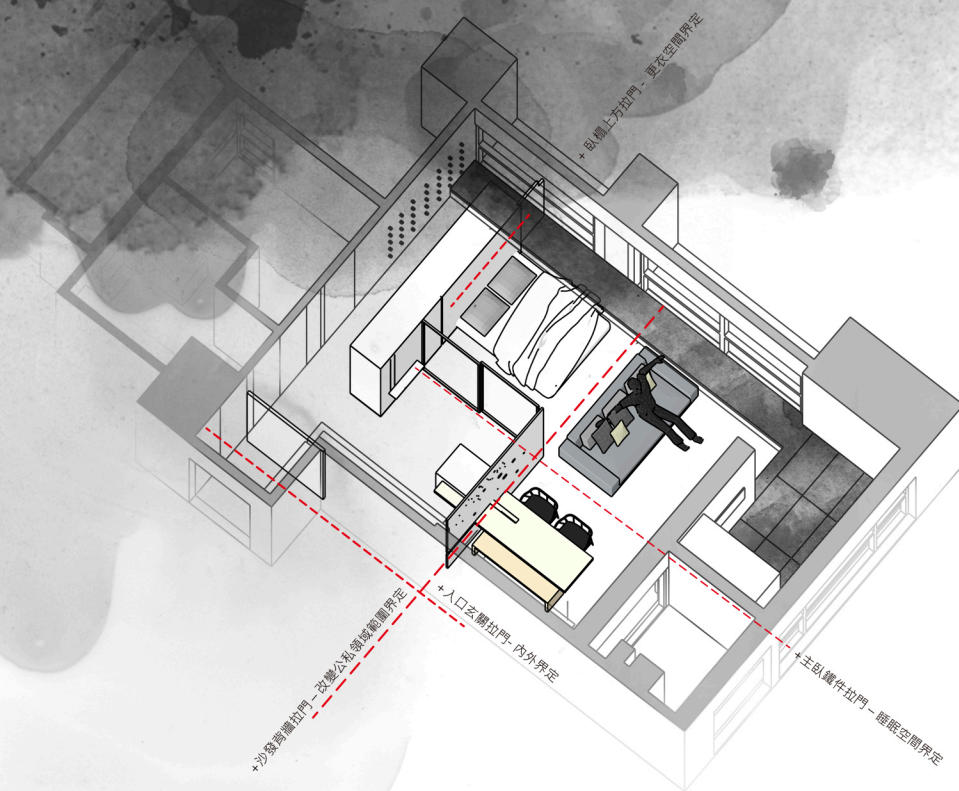
空間可以在不同情境下滿足不同使用，入口拉門關上讓內部完整



臥室拉門關上，睡房空間與更衣空間獨立



客廳拉門關上讓客廳與主臥室自成一個





門牆之界	Border of Door and Wall
<p>在這寸土寸金的擁擠都市裡 屋主辛苦的存了錢買了一間小小的溫泉宅 希望空間利用上可以打破侷限多一點彈性 來滿足他們不同的使用上需求</p> <p>概念上我們先拆解原始的格局框架 把原有隔間全部打破 讓收納空間集中在四邊 中間就形成一個自由平面 再用很多道拉門建構空間</p> <p>拉門 – 是一種移動的牆體也是一種界定 我們在空間中置入了四種拉門</p> <ol style="list-style-type: none"> <li>1.入口玄關拉門- 內外界定</li> <li>2.臥榻上方拉門 – 更衣空間界定</li> <li>3.主臥旁的鐵件拉門 – 睡眠空間界定</li> <li>4.沙發背牆洞洞拉門 – 改變公私領域範圍界定</li> </ol> <p>因為這四道拉門 讓空間可以在不同情境下滿足不同使用 例如：因為父母會來家裡泡湯 因此我們把廁所放在靠門口的地方 也可以將沙發後的拉門往中島移動 讓客廳跟主臥室自成一區 也不會影響屋主的生活作息</p> <p>我們希望藉由自由平面的想法 透過空間的曖昧創造出不同使用彈性 讓居住在裡面的人藉由生活重新定義空間</p>	<p>In the crowded city where every inch of land is as precious as gold, the owner has saved money by working hard to buy a small hot spring house, hoping to break the limitation of the space usage and add more flexibility to meet their needs for difference uses.</p> <p>In concept, we dismantle the original layout, removing the original partitions and focusing the storage space on the four sides. A free space is formed in the center. Many sliding doors are applied to construct the new space. A sliding door is both a movable wall and a definition. We install four kinds of sliding doors in the space.</p> <ol style="list-style-type: none"> <li>1. The sliding door at the entrance-to define the exterior and the interior.</li> <li>2. The sliding door above the couch-to define the space to change clothes.</li> <li>3. The iron sliding door beside the master bedroom-to define the sleeping space.</li> <li>4. The grille sliding door on the wall behind the sofa-to change and define the public and private space.</li> </ol> <p>The four sliding doors can meet the different needs in different situations. For example, the parents will take a hot spring at home, so we arrange the bathroom near the entrance. The sliding door behind the sofa can be moved toward the central island, separating the living room and the master bedroom so that the owner's daily routine won't be affected.</p> <p>With the idea of free space, we hope to create the flexibility of different uses through the space ambiguity and let the people living here redefine the space.</p>