



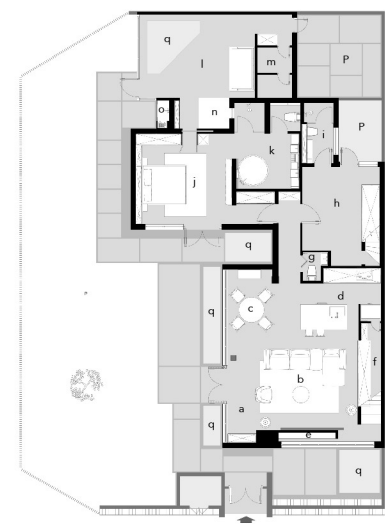




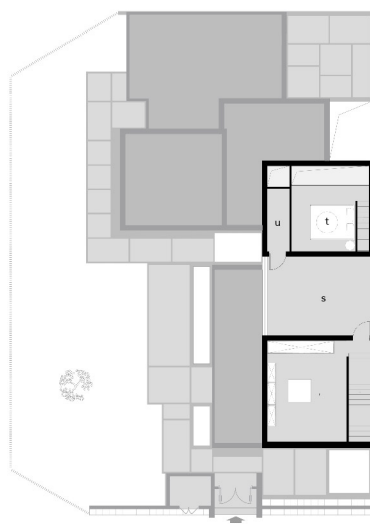
平  
BALANCE  
衡

interior design  
-2018-





1F-Floor Plan



2F-Floor Plan

- a. 门厅/Hall
- b. 客厅/Living Room
- c. 餐厅/Dinning Room
- d. 开放橱窗/Open Window
- e. 猫窝/Cat House
- f. 楼梯下储藏室/Storage under the stairs
- g. 客卫/Guest Bathroom
- h. 儿童房/Children' s room
- i. 儿童房卫生间/Children' s Bathroom
- j. 主卧卫生间/Master Bedroom Bathroom
- k. 阳光房/Sunroom
- l. 犬舍/Dog' s House
- m. 鱼缸/Fish Tank
- n. 洗犬池/Dog Wash Basin
- o. 后院/Backyard
- p. 花池/Flower Pond
- q. 储藏室/Main Storage
- r. 露台/Terrace
- s. 儿童房阁楼/Children' s Attic
- t. 洗衣房/Laundry Room



設計的初衷是創造讓全家人可以長期居住的空間，在美感和實用之間達成微妙的平衡。客廳空間擁有足夠好的光線，拉開窗簾可以見屋外山水，這些都是連結屋主童年回憶的事物。

The purpose of this design is to create a space for the family to live a long time, and to balance the aesthetic and practicability. The lighting in the living room is sensational, and as the curtain opens, the mountains and river outside become a scenery that connect to the designer's childhood memory.





—

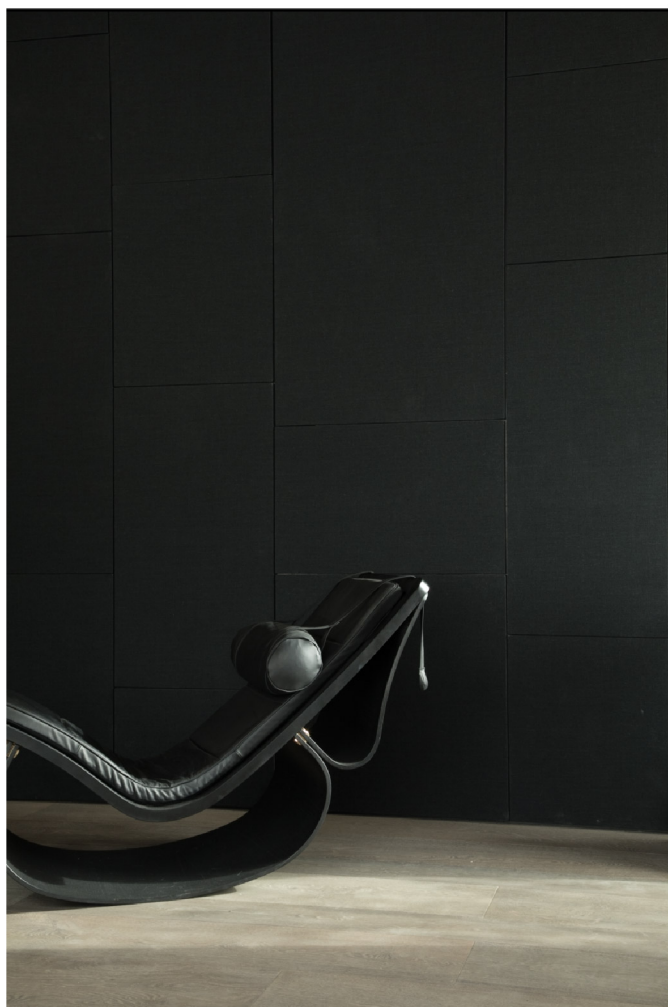
客廳中溫和顏色的拼接讓視覺得到了平復，心情也隨之緩和，營造了侘寂而療癒的氛圍。天花板處的留白配合溫暖的光源製造出天窗的感覺，光源可調節，可以配合自然光的光線改變色溫與照度，設計與壁爐相互呼應，凸顯空間的層次感。

—

The gentle colors in the living room calms the eyes, it creates a wabi-sabi ambient and make people feel peaceful as they walk in the room. The blank space on the ceiling works as a skylight, the implicit beam is adjustable for matching the natural sunlight. The design acts in cooperation with the fireplace, which also gives depth to the house.







—  
黑色背景牆是極大的儲物空間，用來收納雜物的同時保證視覺上的極簡與清爽。背面隱藏的則是通向二樓的樓梯。  
—

—  
The black fabric wall is actually is a space for storage which keeps the minimal look but also save the room for everyday items. The stairs are on the back of it.  
—





廚房極具功能性，外部極簡的設計掩藏了儲物空間。餐廳處採用一顆原木延伸至棚頂作為立柱來回溯童年的記憶。天花板處的弧形曲線別出心裁地使光線在空間中過渡，由明至暗的光影帶給空間不同的節奏。

The kitchen is multifunctional that the minimal design on the outside actually cover the huge storage space inside. The original wood which stands by the wall is also a key object from the designer's childhood memory. The ceiling of the kitchen is another creative approach. The curve shape allows the light transit from light to dark, which brings a rhythm for the space.







—  
臥室空間延續了自然的主色調，光源柔和，衣櫃中暗藏一道門，通過即可進入靈修室。

—  
The natural color is continued in the bedroom, the light is soft and gentle. There is a door hides in the closet which leads to the meditation room.





—

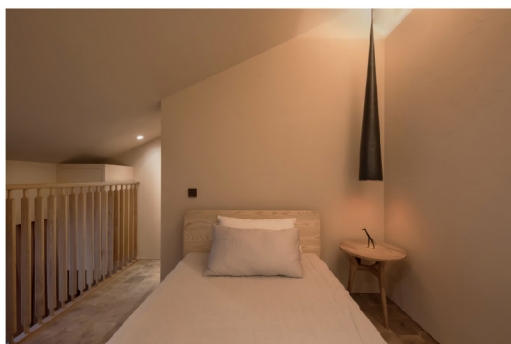
靈修室採用更加肅穆的暗紅色作為主色調，搭配牆面肌理給人沈靜的感受。空間中栽種了主人多年來收集的植物，被主人安置於陽光之下，側面空間可供寵物休憩玩樂，人、植物與動物在空間中各取所需，達成平衡。

—

The designer uses dark red as the main color of meditation room, together with the texture, creates a feeling of calm and relax. The designer collects plants during the time and put them in the sunlight area. The pets can also play and sleep in this room.







—

嬰兒房中採用了可持續的設計，孩子長大後可以到樓上睡覺，樓下則可以作為學習活動的區域。牆面部分貼心地配置了黑板材質，提供小朋友一個可以隨意塗鴉的地方。

—

The design for baby's room is sustainable. When is child is grown up, she can move to the upstairs area to sleep and use the space downstairs as a study. The chalkboard which attached to the wall also provides a place for kids to doodle.

















平衡

本設計的初衷是創造讓全家人可以長期居住的空間，在美感和實用之間達成微妙的平衡。客廳空間擁有足夠好的光線，拉開窗簾可以見屋外山水，這些都是連結屋主童年回憶的事物。客廳中溫和顏色的拼接讓視覺得到了平復，心情也隨之緩和，營造了侘寂而療愈的氛圍。天花板處的留白配合溫暖的光源製造出天窗的感覺，光源可調節，可以配合自然光的光線改變色溫與照度，設計與壁爐相互呼應，凸顯空間的層次感。黑色背景牆是極大的儲物空間，用來收納雜物的同時保證視覺上的極簡與清爽。背面隱藏的則是通向二樓的樓梯。廚房極具功能性，外部極簡的設計掩藏了儲物空間。餐廳處採用一顆原木延伸至棚頂作為立柱來回溯童年的記憶。天花板處的弧形曲線別出心裁地使光線在空間中過渡，由明至暗的光影帶給空間不同的節奏。臥室空間延續了自然的主色調，光源柔和，衣櫃中暗藏一道門，通過即可進入靈修室。靈修室採用更加肅穆的暗紅色作為主色調，搭配牆面肌理給人沉靜的感受。空間中栽種了主人多年來收集的植物，被主人安置于陽光之下，側面空間可供寵物休憩玩樂，人、植物與動物在空間中各取所需，達成平衡。嬰兒房中採用了可持續的設計，孩子長大後可以到樓上睡覺，樓下則可以作為學習活動的區域。牆面部分貼心地配置了黑板材質，提供小朋友一個可以隨意塗鴉的地方。

Balance

The purpose of this design is to create a space for the family to live a long time, and to balance the aesthetic and practicability. The lighting in the living room is sensational, and as the curtain opens, the mountains and river outside become a scenery that connect to the designer's childhood memory. The gentle color in the living room calms the eyes, it creates a wabi-sabi ambient and make people feel peaceful as they walk in the room. The blank space on the ceiling works as a skylight, the implicit beam is adjustable for matching the natural sunlight. The design acts in cooperation with the fireplace, which also gives depth to the house. The black fabric wall is actually is a space for storage which keeps the minimal look but also save the room for everyday items. The stairs are on the back of it. The kitchen is multifunctional that the minimal design on the outside actually cover the huge storage space inside. The original wood which stands by the wall is also a key object from the designer's childhood memory. The ceiling of the kitchen is another creative approach. The curve shape allows the light transit from light to dark, which brings a rhythm for the space. The natural color is continued in the bedroom, the light is soft and gentle. There is a door hides in the closet which leads to the meditation room. The designer uses dark red as the main color of meditation room, together with the texture, creates a feeling of calm and relax. The designer collects plants during the time and put them in the sunlight area. The pets can also play and sleep in this room. The design for baby's room is sustainable. When is child is grown up, she can move to the upstairs area to sleep and use the space downstairs as a study. The chalkboard which attached to the wall also provides a place for kids to doodle.