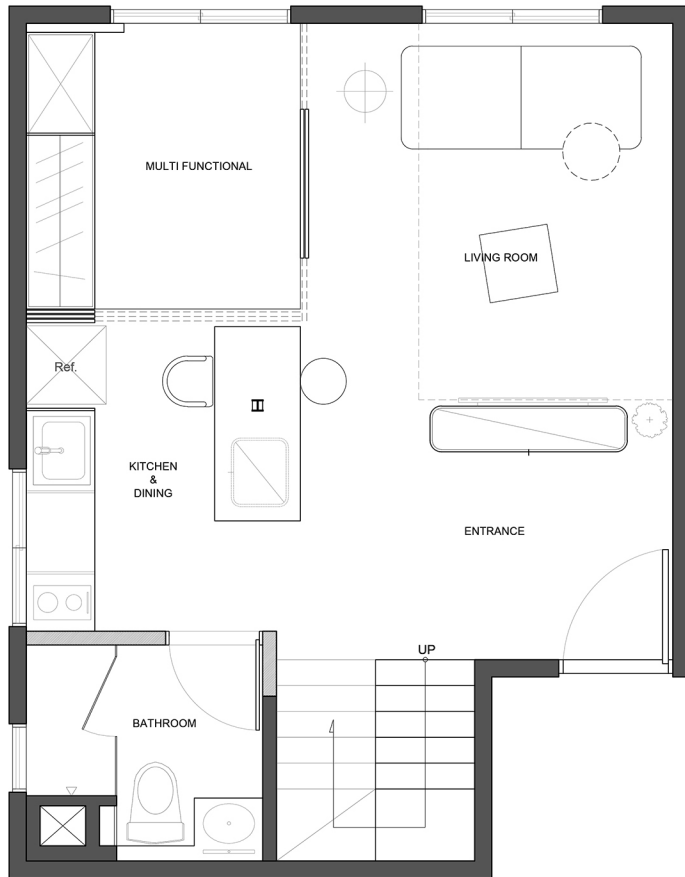
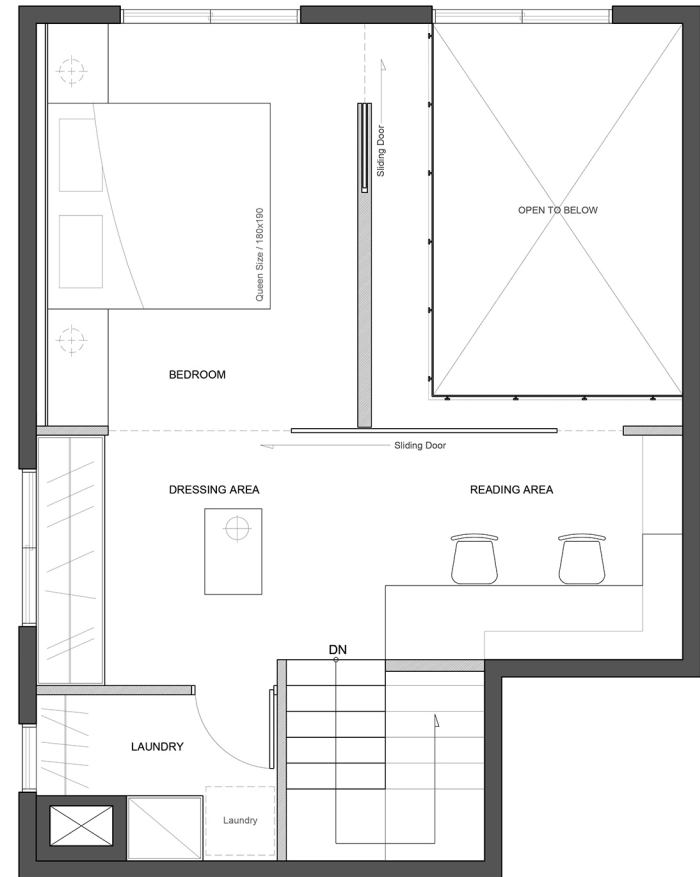


Nancy's Big Apartment



FIRST LEVEL.



SECOND LEVEL.



















Nancy's Big Apartment	Nancy's Big Apartment
<p>從 1989 年的電影 “親愛的，我把孩子縮小了” 得到了小宅設計反向思考的靈感。人的體積變小時，環境物體看起來變得巨大。傢俱的體積不變，但使用許多大比例的框架，像看電影畫面一般，試驗讓空間感和視線的框架一起放大。為一對年輕、工作繁忙的創業情侶將 20 坪的複層空間改造成現代、舒適的都會公寓。在天花板高度、與坪數大小的限制下，將大比例的框架放在小空間裡，利用大門片、大木匡、大開口、大色塊等元素，破壞視覺比例，打破原始的空間感。將原始封閉的隔間全部打開，利用與電視牆共用的訂製鞋櫃，來區分玄關與客、餐廳的區域關係。利用活動門片將不常使用的客房敞開，讓陽光常進入廚房與餐廳，打造可活動、開放的彈性住家格局。將結構 C 型鋼化做餐廳區域的造型光柱，並結合、貫穿餐桌中島檯面。在低天花的區域，運用大量的白色放大空間感，並運用不同的材質、分割和形狀，在大量的白色之間表現不同物體的層次與變化。將鞋櫃與餐桌的櫃體設計為與地面脫離，讓大量體視覺的重量變得輕盈。將原有二樓全封閉之夾層隔間拆除，牆面內退，製造 50 公分寬之空中走道，並利用大開口與大型門片，在樓板高度嚴峻的條件下，在垂直與平面的動線、視線製造互動連結，忽略夾層高度壓迫感，塑造舒適開闊的空間視覺。在小空間裡同時達成機能共用、格局彈性、各個空間的互相連結，製造小坪數內使用者間的可互動性與良好的動線及空間感。並使用自然材質、微型造型，打造簡約現代的住宅框架，在都市繁忙商圈內平靜細刻屋主的優雅生活。</p>	<p>The movie Honey, I Shrunk the Kids inspired us to experiment with the use of large frames to disrupt the original visual proportions and expand the sense of space in a small mezzanine apartment in one of Taipei's most desirable and lively business districts. We transformed the 66 square meter apartment into a modern and elegant metropolitan home for a young entrepreneurial couple. In the face of limited ceiling height and small floor space, big sliding door panels, big wooden frames, big openings, and big colored blocks were used to disrupt the visual proportions and challenge the original sense of space. All closed partitions in the original property were opened up. The custom shoe cabinet that shares a wall with the television defines the spatial relationship between the entry hallway, the living room, and the dining room. Sliding door panels installed in the seldom used guestroom let natural sunlight into the kitchen and dining room and create a dynamic and open living arrangement. The structural steel column functions as a stylish lighted column for the dining area, while also integrating the center countertop and dining table. White finishes are used in areas with lower ceiling heights to expand the sense of space. Different materials, partitions, and contours alter the appearance and presentation of the white palette by creating a hierarchy of objects within the space. The shoe cabinet and the dining table are elevated to attribute a sense of visual lightness to the larger furniture items. The originally enclosed mezzanine room on the second floor was removed, and the wall was re-positioned to create a 50cm-width suspended walkway. Big door panels create an interactive connection between the vertical and horizontal moving routes and sight lines, despite the low ceiling height. The height of the space does not evoke a sensation of pressure but rather creates a comfortable and open spatial experience.</p>