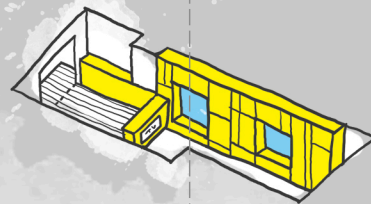


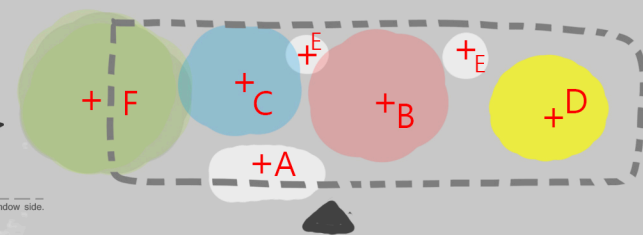
凝聚 CONDENSE

藉由空間中幾個不同的高度與位置的介面
形成一個可坐可躺可停留的中介空間
也是家人回來後一個可以聚在一起凝聚感情的場域



the storage space is focused on the window side.

● 在狹長的空間裡製造了幾個介面：



- A. 在入口一側將衣櫃的功能結合更衣室，也營造出玄關的介面
- B. 刻意保留原有下凹空間，利用高低差的臥榻變成客廳介面
- C. 客廳電視牆折板延伸到地面也形成地板架高臥室的介面
- D. 整合中島與大餐桌 變成一個可以坐很多人聊天的介面
- E. 把收納空間集中在窗戶那側收納櫃加厚讓窗戶開口形成停留介面
- F. 戶外平台為室內架高地板延伸形成自然介面

凝聚

一對忙碌的夫妻為了讓年邁父母離身邊近一些
買了一間小宅給退休的父母住
雖然空間小 但還是希望可以讓父母住得舒服
也希望可以容納家人們三不五十來探望父母的空間

這間房子原始格局為長條狀
所以配置上我們反而利用先天的格局條件
在狹長的空間裡製造了幾個介面：

- 1.在入口一側將衣櫃的機能結合更衣室，也營造出玄關的介面
- 2.刻意保留原有下凹空間，利用高低差的臥榻變成客廳介面
在安全性與機能性上，也讓臥榻特別加寬並增加踏階
與臥榻內嵌的沙發，靠背後方的鐵件是活動式的扶手
- 3.客廳電視牆折板延伸到地面
也形成地板架高臥室的介面
用拉門做區隔
平常也可以完全開放
- 4.我們把廚房移動到最外側
整合中島與大餐桌
變成一個可以坐很多人聊天的介面
- 5.最後把收納空間集中在窗戶那一側
因為收納櫃的厚度讓窗戶開口圍塑出了框架
形成窗邊可以坐的介面
藉由空間中幾個不同的高度與位置的介面
形成一個可坐可躺可停留的中介空間
也是家人回來後一個可以聚一起凝聚感情的場域

Condense

To make the old parents live closer to them, the busy couple bought a small house for the retired parents.
Despite the small space, they still hope to make their parents live a comfortable life.
They also hope that the space can accommodate the family members when they visit their parents.

The original layout of the house is in long strip.
We make use of the original layout to create several interfaces in the long narrow space.

1. At one side of the entrance, the function of the wardrobe combines the walk-in closet to create the interface of the entrance.
2. The original concave space is preserved on purpose.
The height difference of the couch becomes the interface of the living room.
In terms of safety and function, the couch is specially widened and added with the step and the embedded sofa.
The iron piece behind the backrest is the movable handrail.
3. The folding plate of the TV wall in the living room extends to the floor to form interface of the elevated floor in the bedroom.
The sliding door serves as the separation. It can also be fully open in daily life.
4. We move the kitchen to the outermost.
Combing the island and large dining table, it becomes an interface where many people can sit and chat.
5. Last, the storage space is focused on the window side.
The thickness of the storage cabinet shapes a frame at the opening of the window, forming an interface to sit on by the window.

The several interfaces of different heights and locations in the space form the in-between space to sit, lie, and stay.
It's also a field where the family can get together and enhance their affection after coming home.