



空間家具類/家具 TID 獎  
The TID Award of Space furniture/ Furniture

映月茶席  
Moon reflected on tea

衍匠設計有限公司  
GCA studies

主持設計師  
Chief Designer

王駿揚 Chun-Yang Wang

攝影者  
Photographer

邱亞菱 Yaling Chiu



映月茶席

Moon Reflected on tea



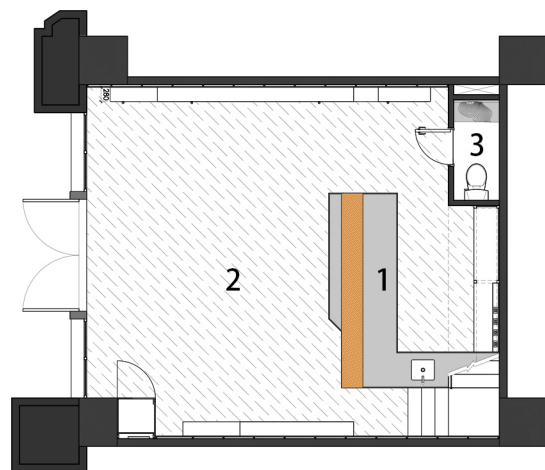


### 設計背景

基地為臨馬路的展覽空間，在參訪展覽之餘，需要一處能讓人歇息與談的靜謐之處，我們試圖在空間置入一個穩定的倚靠物，透過水泥灌注的沉穩量體，成為進入空間時的視覺與功能重心。

### Background

This space is an exhibition area with an open french window facing the road. It needs a corner for people to rest and discuss the contents after visiting. We try to put an anchor into this space, by casting a concrete volume, it becomes an emphasis of vision and function.



- 1. 茶席桌 | tea table
- 2. 展場設計 | exhibition space
- 3. 洗手間 | toilet

設計平面 | Design Plan





木流桌 | Wooden river table





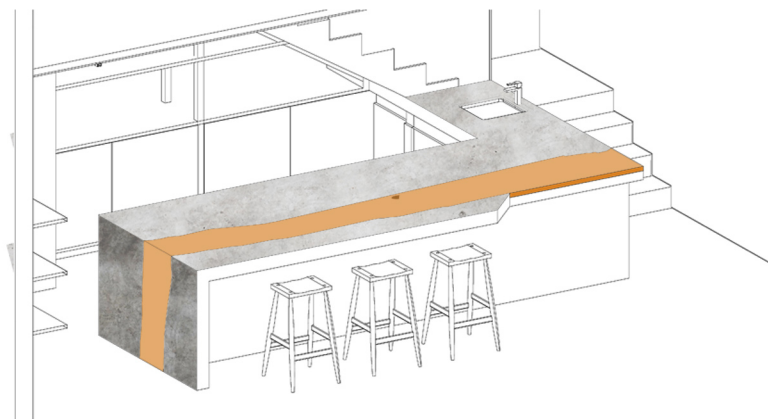
木流桌 | Wooden river table





木質與水泥的溫潤結合  
Combination between wood and concrete





木流桌 | Wooden river table





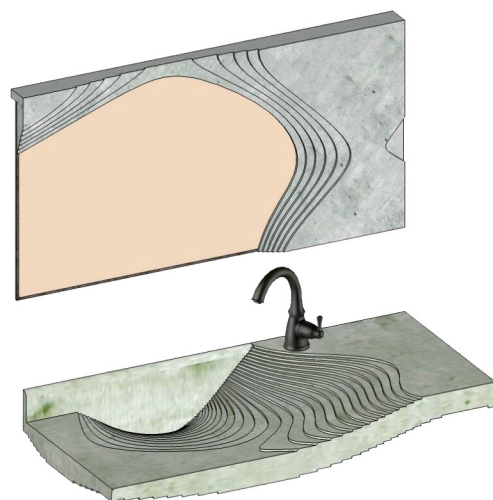


### 設計概念

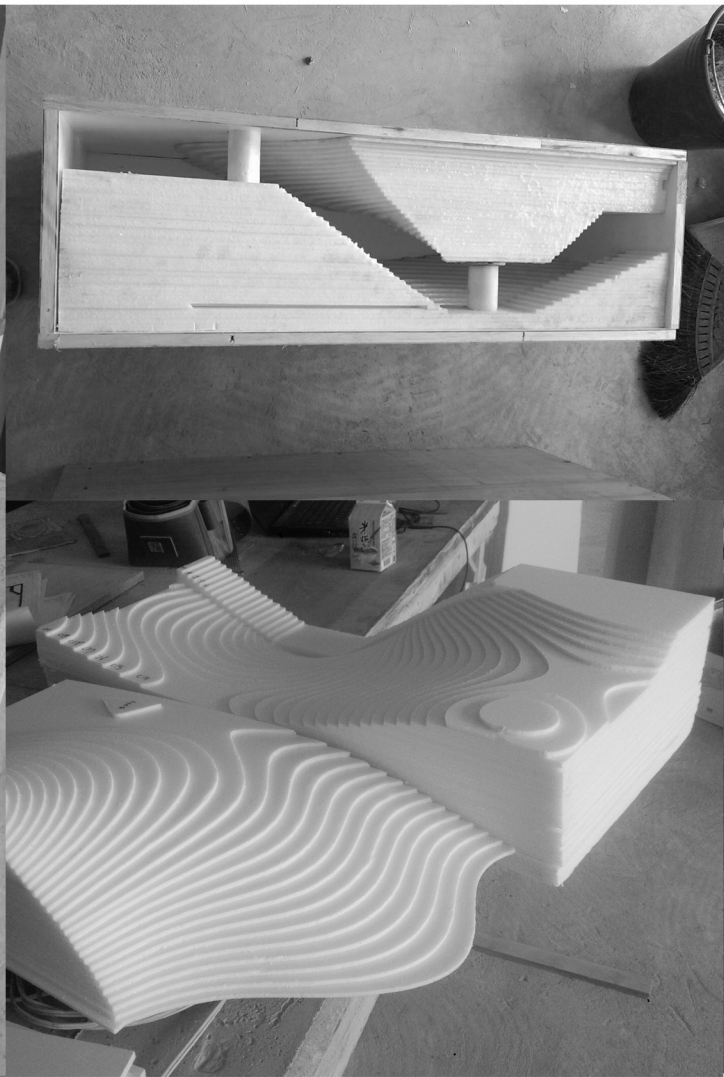
我們以水泥澆灌，創造出地勢的層次與低窪，伴隨著水流的累積，營造出湖泊的意象，並透過懸掛於頭上的明月，將自身的影像映照於眼前水面，彷彿置身於寧靜的夜月湖畔，沉穩而靜謐。

### Design Concept

By casting concrete, we create the contour and low-lying of terrain. The shape of the cast ponding with water, become a symbol of a lake. Through the light of moon-like bulb above, the image of yourself could reflect on the metaphor water surface. Given the feeling of calm and silence, like stand by the lake and enjoy the mid-night moonlight.







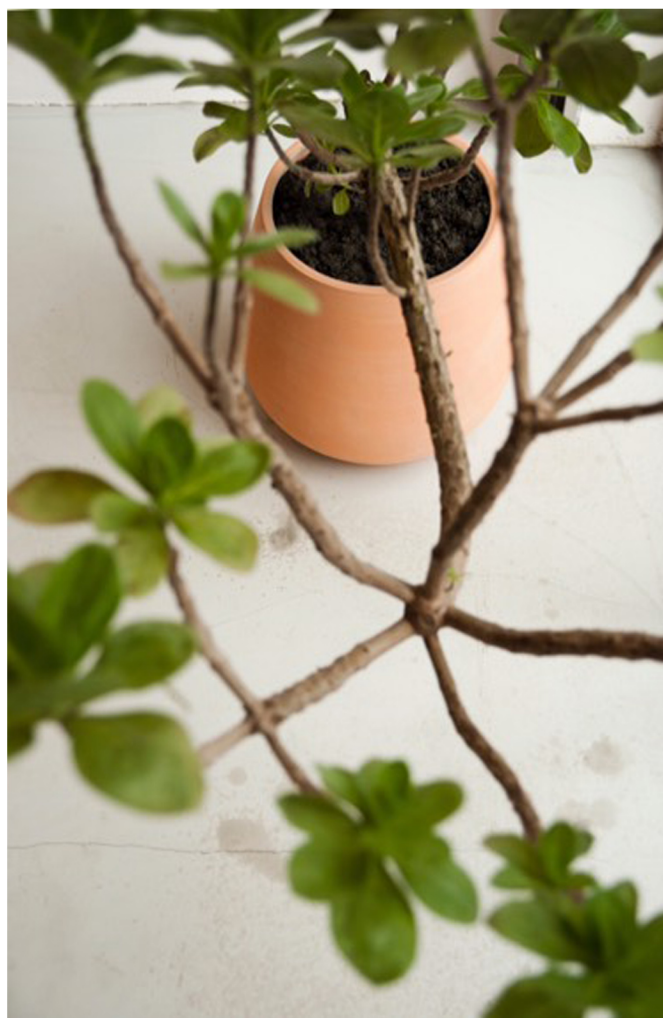














design.art.craft

La Huis.

映月茶席

Moon Reflected on tea



<p>映月茶席</p>	<p>Moon reflected on tea</p>
<p>設計背景 基地為臨馬路的展覽空間，在參訪展覽之餘，需要一處能讓人歇息與談的寧靜之處，我們試圖在空間置入一個穩定的倚靠物，透過水泥灌注的沉穩量體，成為進入空間時的視覺與功能重心。</p> <p>設計概念 我們以水泥澆灌，創造出地勢的層次與低窪，伴隨著水流的累積，營造出湖泊的意象，並透過懸掛於頭上的明月，將自身的影像映照於眼前水面，彷彿置身於寧靜的夜月湖畔，沉穩而靜謐。</p>	<p>Background This space is an exhibition area with an open french window facing the road. It needs a corner for people to rest and discuss the contents after visiting. We try to put an anchor into this space, by casting a concrete volume, it becomes an emphasis of vision and function.</p> <p>Design Concept By casting concrete, we create the contour and low-lying of terrain. The shape of the cast ponding with water, become a symbol of a lake. Through the light of moon-like bulb above, the image of yourself could reflect on the metaphor water surface. Given the feeling of calm and silence, like stand by the lake and enjoy the midnight moonlight.</p>